

LAMPIRAN 5

**TABEL PAD, DANA PERIMBANGAN, DAN BELANJA MODAL KABUPATEN DAN KOTA
DI PULAU SUMATRA TAHUN 2015-2019**

No	Kabupaten/Kota	Tahun	PAD	Dana Perimbangan	Belanja Modal
1	Aceh Barat	2015	Rp 130.428.452.038	Rp 673.694.900.761	Rp 271.820.964.773
		2016	Rp 140.614.479.580	Rp 752.608.323.882	Rp 298.444.777.672
		2017	Rp 161.742.858.644	Rp 768.955.867.896	Rp 313.210.843.762
		2018	Rp 150.499.049.236	Rp 781.868.536.239	Rp 192.424.908.404
		2019	Rp 153.799.291.478	Rp 814.507.507.903	Rp 263.508.924.061
2	Aceh Barat Daya	2015	Rp 61.190.085.187	Rp 622.329.754.490	Rp 255.102.255.083
		2016	Rp 80.496.800.924	Rp 735.978.021.965	Rp 377.696.754.362
		2017	Rp 91.571.494.831	Rp 616.172.642.987	Rp 235.332.275.224
		2018	Rp 83.468.426.211	Rp 656.379.749.204	Rp 172.541.445.155
		2019	Rp 90.348.940.272	Rp 616.293.166.060	Rp 270.575.998.759
3	Aceh Besar	2015	Rp 140.533.050.822	Rp 859.950.978.542	Rp 263.655.924.336
		2016	Rp 135.284.494.843	Rp 1.057.384.175.963	Rp 398.717.640.742
		2017	Rp 145.464.468.479	Rp 944.271.107.790	Rp 284.528.814.315
		2018	Rp 159.480.168.138	Rp 930.010.592.141	Rp 256.173.868.996
		2019	Rp 169.896.999.689	Rp 1.012.163.249.230	Rp 285.173.934.327
4	Aceh Jaya	2015	Rp 40.385.794.988	Rp 601.861.839.640	Rp 263.885.318.188
		2016	Rp 45.774.374.212	Rp 655.719.358.282	Rp 341.608.872.896
		2017	Rp 52.599.500.274	Rp 565.133.361.976	Rp 278.769.053.654
		2018	Rp 58.624.901.408	Rp 584.376.272.078	Rp 127.300.475.592
		2019	Rp 72.776.854.246	Rp 561.610.964.978	Rp 159.307.117.025
5	Aceh Selatan	2015	Rp 92.665.502.126	Rp 823.270.807.421	Rp 337.270.191.875
		2016	Rp 125.989.165.879	Rp 979.994.635.405	Rp 362.466.116.640
		2017	Rp 140.875.267.831	Rp 951.220.993.078	Rp 389.951.814.488
		2018	Rp 152.071.795.581	Rp 965.371.745.516	Rp 229.929.481.062
		2019	Rp 139.976.611.272	Rp 931.637.089.659	Rp 265.839.014.498

6	Aceh Singkil	2015	Rp 39.375.695.217	Rp 616.306.455.621	Rp 314.275.961.928
		2016	Rp 42.057.160.523	Rp 649.484.006.090	Rp 306.370.410.800
		2017	Rp 43.441.129.848	Rp 589.766.359.602	Rp 194.341.402.778
		2018	Rp 45.289.515.137	Rp 576.956.207.571	Rp 103.786.508.547
		2019	Rp 45.264.588.434	Rp 582.727.132.406	Rp 181.738.205.043
7	Aceh Tamiang	2015	Rp 100.454.203.157	Rp 724.104.955.568	Rp 366.296.679.877
		2016	Rp 114.051.092.364	Rp 863.883.794.168	Rp 347.581.527.211
		2017	Rp 116.246.212.753	Rp 772.295.722.888	Rp 292.204.311.693
		2018	Rp 139.261.841.912	Rp 781.786.995.632	Rp 177.269.500.709
		2019	Rp 128.905.940.325	Rp 794.905.901.151	Rp 242.626.987.791
8	Aceh Tengah	2015	Rp 157.256.773.343	Rp 774.768.953.997	Rp 384.854.442.208
		2016	Rp 156.130.102.890	Rp 1.013.908.813.619	Rp 512.060.288.509
		2017	Rp 163.000.739.413	Rp 875.816.161.614	Rp 411.264.451.094
		2018	Rp 150.818.710.372	Rp 829.534.775.825	Rp 180.831.285.122
		2019	Rp 170.961.167.591	Rp 821.300.806.452	Rp 278.734.275.752
9	Aceh Tenggara	2015	Rp 59.153.235.036	Rp 752.674.607.559	Rp 346.875.826.581
		2016	Rp 61.457.042.356	Rp 954.865.467.404	Rp 394.681.862.052
		2017	Rp 60.053.234.222	Rp 790.800.082.057	Rp 364.232.905.006
		2018	Rp 80.263.476.272	Rp 743.756.855.653	Rp 147.844.275.220
		2019	Rp 117.628.924.351	Rp 785.308.359.305	Rp 229.640.623.657
10	Aceh Timur	2015	Rp 98.704.908.471	Rp 912.352.772.658	Rp 332.336.613.883
		2016	Rp 94.337.443.632	Rp 1.051.942.856.036	Rp 375.863.215.945
		2017	Rp 158.492.371.450	Rp 1.043.156.637.656	Rp 412.595.321.228
		2018	Rp 169.455.864.158	Rp 1.027.652.921.597	Rp 140.278.407.458
		2019	Rp 185.148.022.040	Rp 1.106.529.214.868	Rp 390.860.852.229
11	Aceh Utara	2015	Rp 194.029.636.826	Rp 1.204.656.604.852	Rp 379.276.402.398
		2016	Rp 388.251.800.972	Rp 1.296.652.358.755	Rp 375.094.424.678
		2017	Rp 202.091.566.055	Rp 1.328.605.892.782	Rp 374.745.385.004
		2018	Rp 231.848.856.926	Rp 1.342.423.755.687	Rp 223.274.922.406
		2019	Rp 279.567.720.150	Rp 1.454.869.953.193	Rp 420.688.048.416
12	Bener Meriah	2015	Rp 58.753.978.243	Rp 529.055.866.786	Rp 237.458.856.251
		2016	Rp 66.454.059.144	Rp 645.559.882.529	Rp 279.065.275.550
		2017	Rp 82.038.407.024	Rp 571.579.093.355	Rp 245.579.059.470
		2018	Rp 67.961.546.855	Rp 580.388.983.190	Rp 164.511.557.740
		2019	Rp 86.415.549.452	Rp 609.708.370.154	Rp 189.876.743.313

13	Bireuen	2015	Rp 173.972.782.734	Rp 984.896.515.695	Rp 300.826.524.192
		2016	Rp 186.162.575.752	Rp 1.120.470.574.800	Rp 303.367.904.350
		2017	Rp 192.939.858.236	Rp 1.156.115.277.116	Rp 410.280.091.320
		2018	Rp 179.476.248.778	Rp 1.064.479.927.363	Rp 160.789.859.916
		2019	Rp 156.528.834.491	Rp 1.107.652.778.543	Rp 295.399.475.653
14	Gayo Lues	2015	Rp 41.407.502.305	Rp 631.508.034.667	Rp 346.114.285.476
		2016	Rp 46.277.349.072	Rp 710.193.971.046	Rp 385.702.742.429
		2017	Rp 60.312.445.602	Rp 571.558.575.124	Rp 241.994.974.893
		2018	Rp 48.758.464.134	Rp 649.955.059.479	Rp 182.929.286.128
		2019	Rp 51.415.803.751	Rp 585.232.201.100	Rp 189.666.012.328
15	Nagan Raya	2015	Rp 79.938.395.926	Rp 621.186.430.933	Rp 399.147.688.269
		2016	Rp 104.202.917.807	Rp 650.964.915.284	Rp 332.800.183.744
		2017	Rp 74.051.054.127	Rp 579.125.407.276	Rp 336.680.572.689
		2018	Rp 97.118.515.691	Rp 667.610.847.884	Rp 186.621.969.989
		2019	Rp 87.625.375.251	Rp 673.321.655.285	Rp 293.442.563.407
16	Pidie Jaya	2015	Rp 44.573.668.037	Rp 599.882.500.509	Rp 311.659.625.620
		2016	Rp 45.986.243.650	Rp 677.272.843.690	Rp 302.363.483.850
		2017	Rp 47.409.466.485	Rp 593.660.765.519	Rp 234.170.955.195
		2018	Rp 57.432.814.784	Rp 610.014.885.166	Rp 178.921.414.604
		2019	Rp 68.830.728.478	Rp 610.788.391.748	Rp 205.016.682.808
17	Simeulue	2015	Rp 45.938.231.973	Rp 504.797.934.621	Rp 149.681.750.976
		2016	Rp 48.646.141.736	Rp 612.714.265.741	Rp 181.131.943.963
		2017	Rp 61.095.183.851	Rp 604.618.275.744	Rp 243.806.652.872
		2018	Rp 63.146.021.911	Rp 588.843.953.598	Rp 137.450.686.403
		2019	Rp 79.466.327.068	Rp 596.630.613.901	Rp 202.986.400.858
18	Banda Aceh	2015	Rp 209.914.107.301	Rp 680.301.756.050	Rp 221.109.932.994
		2016	Rp 258.591.409.669	Rp 801.801.081.470	Rp 259.597.341.647
		2017	Rp 270.170.805.366	Rp 737.750.392.419	Rp 227.594.104.789
		2018	Rp 246.272.150.485	Rp 748.380.228.413	Rp 100.757.750.369
		2019	Rp 235.123.074.164	Rp 752.795.789.176	Rp 148.964.382.239
19	Langsa	2015	Rp 109.116.860.676	Rp 505.098.308.709	Rp 174.548.981.891
		2016	Rp 121.369.467.376	Rp 656.804.723.246	Rp 294.379.982.765
		2017	Rp 120.138.956.033	Rp 677.192.132.793	Rp 333.296.714.479
		2018	Rp 121.316.713.329	Rp 593.621.554.571	Rp 115.478.103.942
		2019	Rp 115.244.246.710	Rp 617.782.373.399	Rp 198.592.250.991

20	Lhokseumawe	2015	Rp	56.560.454.282	Rp	610.875.498.509	Rp	223.021.063.652
		2016	Rp	56.348.631.473	Rp	688.355.157.426	Rp	235.985.010.488
		2017	Rp	62.986.260.103	Rp	644.213.912.781	Rp	223.594.518.755
		2018	Rp	65.618.966.778	Rp	586.255.868.918	Rp	143.082.398.156
		2019	Rp	61.442.558.520	Rp	607.297.641.452	Rp	203.875.275.990
21	Sabang	2015	Rp	49.602.766.629	Rp	402.736.299.259	Rp	138.624.539.925
		2016	Rp	47.776.631.105	Rp	504.011.996.221	Rp	174.460.682.618
		2017	Rp	55.081.057.066	Rp	436.019.489.449	Rp	129.331.095.258
		2018	Rp	57.188.076.200	Rp	489.653.789.249	Rp	113.657.122.720
		2019	Rp	601.196.137.245	Rp	478.978.998.625	Rp	178.521.527.380
22	Subulussalam	2015	Rp	35.905.412.863	Rp	454.292.012.035	Rp	198.941.247.993
		2016	Rp	42.314.514.319	Rp	548.122.264.173	Rp	353.145.096.947
		2017	Rp	56.519.514.115	Rp	494.792.042.493	Rp	267.086.647.323
		2018	Rp	38.955.598.635	Rp	432.614.060.638	Rp	110.046.462.273
		2019	Rp	51.810.001.543	Rp	459.031.906.513	Rp	182.336.942.860
23	Pidie	2015	Rp	210.501.782.065	Rp	964.665.249.946	Rp	311.431.949.540
		2016	Rp	249.489.453.845	Rp	1.136.572.837.485	Rp	393.092.567.637
		2017	Rp	267.608.101.034	Rp	1.072.658.698.773	Rp	307.261.418.844
		2018	Rp	237.201.958.016	Rp	1.098.033.955.156	Rp	271.087.485.994
		2019	Rp	243.230.774.790	Rp	1.066.925.649.561	Rp	304.246.473.051
24	Asahan	2015	Rp	98.279.308.429	Rp	1.014.692.929.384	Rp	227.438.269.630
		2016	Rp	119.498.541.230	Rp	1.188.340.367.058	Rp	237.676.952.256
		2017	Rp	123.687.304.879	Rp	1.137.299.069.609	Rp	350.146.028.220
		2018	Rp	142.972.039.821	Rp	1.176.621.457.467	Rp	230.200.116.402
		2019	Rp	149.647.050.442	Rp	1.198.101.351.385	Rp	304.478.575.305
25	Batu Bara	2015	Rp	51.514.120.899	Rp	665.570.072.713	Rp	227.967.032.209
		2016	Rp	59.388.277.802	Rp	864.938.764.513	Rp	320.423.994.640
		2017	Rp	66.944.796.375	Rp	781.997.824.280	Rp	164.420.002.646
		2018	Rp	64.385.292.862	Rp	784.874.225.863	Rp	139.977.493.680
		2019	Rp	129.221.846.897	Rp	800.268.552.172	Rp	222.600.369.777
26	Dairi	2015	Rp	58.791.848.521	Rp	630.242.780.607	Rp	180.098.060.210
		2016	Rp	68.003.241.760	Rp	643.495.769.537	Rp	217.941.187.120
		2017	Rp	128.489.751.332	Rp	629.176.730.114	Rp	260.705.968.964
		2018	Rp	73.906.829.603	Rp	630.738.669.380	Rp	201.561.437.853
		2019	Rp	74.360.339.718	Rp	643.527.342.978	Rp	197.567.865.963

27	Deli Serdang	2015	Rp 515.293.681.488	Rp 1.565.271.496.813	Rp 491.710.226.083
		2016	Rp 573.010.351.005	Rp 1.974.004.465.463	Rp 561.285.600.326
		2017	Rp 849.286.151.151	Rp 1.987.560.013.808	Rp 741.456.897.032
		2018	Rp 729.648.594.489	Rp 1.992.298.798.336	Rp 670.584.193.041
		2019	Rp 825.375.281.297	Rp 2.000.833.953.938	Rp 703.280.070.640
28	Karo	2015	Rp 87.644.277.141	Rp 850.087.455.305	Rp 300.098.182.224
		2016	Rp 99.913.302.299	Rp 1.040.055.892.716	Rp 231.098.360.315
		2017	Rp 157.866.720.976	Rp 959.269.973.779	Rp 335.935.240.977
		2018	Rp 159.189.197.472	Rp 941.257.217.088	Rp 222.116.791.413
		2019	Rp 117.683.657.833	Rp 977.630.358.355	Rp 196.427.858.444
29	Labuhanbatu Selatan	2015	Rp 32.287.183.165	Rp 568.365.690.930	Rp 262.030.817.625
		2016	Rp 42.507.928.169	Rp 731.552.737.399	Rp 294.626.135.833
		2017	Rp 84.964.450.592	Rp 692.535.739.210	Rp 273.152.742.668
		2018	Rp 52.209.768.574	Rp 713.753.018.665	Rp 219.379.315.619
		2019	Rp 75.687.647.545	Rp 714.150.631.492	Rp 220.503.868.788
30	Labuhanbatu Utara	2015	Rp 34.499.898.609	Rp 637.402.293.870	Rp 218.138.402.421
		2016	Rp 42.296.115.862	Rp 816.898.927.802	Rp 256.257.019.320
		2017	Rp 52.690.086.354	Rp 839.472.606.186	Rp 204.563.138.008
		2018	Rp 57.010.690.546	Rp 864.256.204.242	Rp 223.037.632.088
		2019	Rp 70.122.562.532	Rp 817.231.451.960	Rp 258.116.878.081
31	Langkat	2015	Rp 122.715.359.909	Rp 1.388.565.543.763	Rp 497.257.525.402
		2016	Rp 132.673.213.413	Rp 1.732.717.434.638	Rp 626.295.461.427
		2017	Rp 139.717.647.855	Rp 1.774.515.682.680	Rp 527.164.701.722
		2018	Rp 136.680.578.541	Rp 1.722.928.314.875	Rp 380.576.043.929
		2019	Rp 167.523.076.880	Rp 1.732.852.882.496	Rp 346.035.976.277
32	Nias	2015	Rp 70.892.590.608	Rp 525.799.031.813	Rp 194.330.739.832
		2016	Rp 82.840.434.009	Rp 731.036.152.945	Rp 227.559.502.343
		2017	Rp 95.726.167.744	Rp 599.493.520.084	Rp 239.523.860.631
		2018	Rp 88.754.606.115	Rp 608.250.693.290	Rp 207.016.876.763
		2019	Rp 107.639.139.180	Rp 621.468.917.081	Rp 190.454.026.585
33	Nias Barat	2015	Rp 14.492.750.130	Rp 382.494.289.563	Rp 186.499.821.897
		2016	Rp 15.616.742.531	Rp 440.772.678.178	Rp 156.180.257.609
		2017	Rp 36.239.996.547	Rp 506.809.585.092	Rp 199.747.992.745
		2018	Rp 40.193.008.207	Rp 568.007.188.680	Rp 247.896.475.505
		2019	Rp 18.411.235.998	Rp 564.638.256.423	Rp 180.915.741.154

34	Nias Selatan	2015	Rp	15.037.043.953	Rp	628.938.409.971	Rp	184.978.091.040
		2016	Rp	16.263.067.492	Rp	716.606.956.323	Rp	122.786.141.236
		2017	Rp	18.450.266.700	Rp	768.617.877.771	Rp	187.946.733.163
		2018	Rp	19.605.734.782	Rp	771.694.298.994	Rp	221.305.834.645
		2019	Rp	25.664.883.761	Rp	859.504.478.763	Rp	238.978.343.319
35	Padang Lawas	2015	Rp	34.707.409.094	Rp	520.171.609.244	Rp	226.709.432.657
		2016	Rp	39.341.382.403	Rp	895.218.964.219	Rp	218.865.038.415
		2017	Rp	46.509.729.525	Rp	924.467.201.464	Rp	221.963.650.130
		2018	Rp	47.455.308.607	Rp	706.290.658.171	Rp	204.458.003.516
		2019	Rp	52.067.312.091	Rp	773.801.322.513	Rp	241.420.449.752
36	Padang Lawas Utara	2015	Rp	26.446.077.261	Rp	504.651.158.603	Rp	170.639.985.692
		2016	Rp	30.453.223.133	Rp	736.693.624.975	Rp	228.440.427.691
		2017	Rp	74.524.919.693	Rp	709.333.080.176	Rp	312.571.172.200
		2018	Rp	74.306.097.500	Rp	700.703.635.068	Rp	196.036.175.259
		2019	Rp	42.929.111.658	Rp	763.032.737.308	Rp	247.484.629.027
37	Pakpak Bharat	2015	Rp	15.880.335.074	Rp	420.108.315.709	Rp	156.407.389.643
		2016	Rp	18.748.805.556	Rp	438.748.234.369	Rp	164.178.919.569
		2017	Rp	29.320.487.447	Rp	428.721.693.525	Rp	138.363.427.367
		2018	Rp	20.061.207.923	Rp	425.088.931.780	Rp	118.336.626.935
		2019	Rp	33.915.957.645	Rp	462.549.741.238	Rp	145.937.021.774
38	Samosir	2015	Rp	34.297.498.964	Rp	521.808.716.378	Rp	181.611.818.940
		2016	Rp	39.268.200.307	Rp	592.629.074.250	Rp	235.234.249.681
		2017	Rp	72.228.748.255	Rp	634.006.321.459	Rp	224.240.859.127
		2018	Rp	47.446.623.389	Rp	608.164.685.810	Rp	186.281.849.902
		2019	Rp	60.497.449.963	Rp	636.204.549.291	Rp	164.093.834.379
39	Serdang Bedagai	2015	Rp	80.141.929.203	Rp	867.189.090.713	Rp	198.977.836.649
		2016	Rp	108.062.776.483	Rp	1.077.784.187.979	Rp	291.118.162.785
		2017	Rp	103.711.290.229	Rp	1.024.148.170.383	Rp	238.604.911.311
		2018	Rp	194.382.972.213	Rp	1.118.880.330.379	Rp	349.104.338.217
		2019	Rp	143.144.170.557	Rp	1.077.175.098.960	Rp	313.357.351.131
40	Simalungun	2015	Rp	111.893.282.770	Rp	1.247.469.763.643	Rp	185.676.905.078
		2016	Rp	132.560.800.826	Rp	1.618.580.654.169	Rp	210.953.244.334
		2017	Rp	252.663.015.527	Rp	1.651.913.534.467	Rp	293.713.450.618
		2018	Rp	164.107.850.129	Rp	1.595.373.952.344	Rp	405.283.313.970
		2019	Rp	191.940.130.095	Rp	1.638.140.548.143	Rp	381.344.591.277

41	Tapanuli Selatan	2015	Rp 109.349.451.811	Rp 807.316.680.743	Rp 303.915.012.639
		2016	Rp 76.640.675.840	Rp 1.068.059.083.000	Rp 307.152.296.664
		2017	Rp 104.722.613.740	Rp 833.027.848.924	Rp 277.231.852.741
		2018	Rp 140.044.217.234	Rp 940.110.738.096	Rp 363.140.233.295
		2019	Rp 167.458.157.940	Rp 976.668.586.417	Rp 420.660.057.835
42	Tapanuli Tengah	2015	Rp 65.224.735.174	Rp 762.000.830.373	Rp 223.714.622.144
		2016	Rp 71.758.981.995	Rp 859.438.493.624	Rp 169.402.708.868
		2017	Rp 72.710.308.590	Rp 849.775.743.869	Rp 169.521.314.403
		2018	Rp 76.660.883.410	Rp 887.237.071.769	Rp 220.747.371.092
		2019	Rp 88.441.123.323	Rp 863.854.168.332	Rp 219.450.399.720
43	Tapanuli Utara	2015	Rp 82.790.862.061	Rp 985.268.724.930	Rp 240.549.906.381
		2016	Rp 94.783.154.638	Rp 894.622.014.138	Rp 238.928.406.088
		2017	Rp 162.441.906.093	Rp 828.361.615.959	Rp 155.844.953.910
		2018	Rp 105.656.762.964	Rp 868.012.988.517	Rp 181.662.031.464
		2019	Rp 113.990.759.582	Rp 898.881.627.467	Rp 194.947.102.075
44	Toba Samosir	2015	Rp 30.952.610.879	Rp 601.567.683.389	Rp 154.106.801.573
		2016	Rp 54.391.304.393	Rp 733.019.250.936	Rp 181.212.965.236
		2017	Rp 54.840.823.646	Rp 753.482.194.833	Rp 199.230.031.160
		2018	Rp 52.298.960.803	Rp 705.931.665.689	Rp 152.970.216.966
		2019	Rp 68.046.526.605	Rp 735.587.572.963	Rp 135.339.350.834
45	Binjai	2015	Rp 78.327.792.811	Rp 604.168.845.881	Rp 174.972.076.727
		2016	Rp 97.339.497.584	Rp 747.927.480.220	Rp 202.943.191.598
		2017	Rp 139.217.612.424	Rp 689.453.570.653	Rp 154.059.962.293
		2018	Rp 135.870.920.433	Rp 714.374.160.938	Rp 214.254.227.113
		2019	Rp 108.954.526.370	Rp 748.991.939.807	Rp 127.213.320.411
46	Gunungsitoli	2015	Rp 24.334.650.845	Rp 491.849.107.813	Rp 209.493.626.276
		2016	Rp 29.185.403.160	Rp 612.805.752.844	Rp 260.138.208.349
		2017	Rp 29.769.903.264	Rp 546.848.082.574	Rp 249.617.598.852
		2018	Rp 29.456.354.563	Rp 552.039.778.301	Rp 183.521.284.315
		2019	Rp 32.209.121.389	Rp 559.094.823.827	Rp 156.757.286.042
47	Medan	2015	Rp 1.489.723.189.089	Rp 1.355.644.466.363	Rp 916.888.037.907
		2016	Rp 1.535.309.574.015	Rp 1.900.853.852.448	Rp 936.599.131.961
		2017	Rp 1.739.756.922.634	Rp 2.122.769.416.793	Rp 997.475.991.902
		2018	Rp 1.636.204.514.683	Rp 2.157.180.424.946	Rp 753.996.886.210
		2019	Rp 1.829.665.882.248	Rp 2.156.807.334.247	Rp 992.661.245.695

48	Padangsidempuan	2015	Rp 67.730.738.638	Rp 548.495.448.236	Rp 121.667.415.160
		2016	Rp 78.417.755.706	Rp 666.941.906.384	Rp 159.508.881.421
		2017	Rp 109.640.419.280	Rp 673.189.397.118	Rp 184.093.967.563
		2018	Rp 75.063.575.093	Rp 641.431.373.569	Rp 113.072.061.374
		2019	Rp 87.432.283.185	Rp 693.704.664.371	Rp 137.812.393.424
49	Pematangsiantar	2015	Rp 95.557.865.286	Rp 609.312.359.513	Rp 152.228.322.901
		2016	Rp 101.582.731.954	Rp 756.797.369.354	Rp 199.557.080.000
		2017	Rp 105.445.993.204	Rp 727.984.049.610	Rp 262.835.986.784
		2018	Rp 137.052.839.193	Rp 796.804.963.671	Rp 287.958.994.695
		2019	Rp 125.018.502.648	Rp 808.453.423.363	Rp 204.959.071.624
50	Tebing Tinggi	2015	Rp 82.410.053.810	Rp 462.561.984.813	Rp 158.487.242.001
		2016	Rp 94.058.491.717	Rp 42.924.621.494	Rp 203.355.262.407
		2017	Rp 113.222.874.687	Rp 31.489.305.247	Rp 184.156.162.478
		2018	Rp 114.048.354.143	Rp 489.858.509.127	Rp 203.340.069.233
		2019	Rp 105.239.918.352	Rp 499.396.953.464	Rp 153.577.322.072
51	Humbang Hasundutan	2015	Rp 35.237.805.568	Rp 593.461.102.765	Rp 169.275.196.973
		2016	Rp 42.096.841.517	Rp 717.140.754.486	Rp 223.630.077.622
		2017	Rp 85.598.357.027	Rp 719.933.211.876	Rp 224.702.953.707
		2018	Rp 92.735.853.813	Rp 681.797.476.833	Rp 168.860.963.829
		2019	Rp 73.757.931.630	Rp 707.685.265.766	Rp 177.278.522.408
52	Labuhan Batu	2015	Rp 101.023.216.259	Rp 707.284.674.013	Rp 185.515.383.315
		2016	Rp 125.925.267.724	Rp 1.005.470.238.990	Rp 285.089.741.793
		2017	Rp 124.674.017.375	Rp 908.583.176.239	Rp 227.921.020.653
		2018	Rp 162.794.472.017	Rp 928.906.312.239	Rp 139.178.414.287
		2019	Rp 175.335.685.317	Rp 925.148.005.724	Rp 238.729.009.917
53	Mandailing Natal	2015	Rp 63.847.458.130	Rp 856.846.422.230	Rp 238.677.824.662
		2016	Rp 70.405.901.828	Rp 1.055.984.803.941	Rp 248.898.511.516
		2017	Rp 80.581.688.937	Rp 1.045.563.864.478	Rp 268.243.397.538
		2018	Rp 84.809.923.496	Rp 1.064.375.456.777	Rp 199.849.014.897
		2019	Rp 98.758.815.328	Rp 1.139.343.819.991	Rp 206.392.843.128
54	Nias Utara	2015	Rp 16.923.883.730	Rp 507.977.725.413	Rp 219.043.273.818
		2016	Rp 23.852.634.632	Rp 558.365.845.287	Rp 233.739.122.399
		2017	Rp 20.107.246.943	Rp 555.706.647.346	Rp 251.675.869.175
		2018	Rp 50.395.504.636	Rp 564.777.933.815	Rp 192.092.726.869
		2019	Rp 57.961.363.630	Rp 659.120.965.664	Rp 258.215.519.657

55	Sibolga	2015	Rp 60.486.785.863	Rp 485.021.429.613	Rp 126.724.781.839
		2016	Rp 68.537.902.708	Rp 530.442.349.928	Rp 185.382.143.912
		2017	Rp 103.672.203.938	Rp 490.499.639.818	Rp 124.824.374.936
		2018	Rp 81.245.733.812	Rp 512.639.624.901	Rp 142.467.823.362
		2019	Rp 69.312.217.832	Rp 502.391.227.055	Rp 81.569.259.159
56	Tanjung Balai	2015	Rp 57.094.161.596	Rp 440.409.554.663	Rp 106.723.068.953
		2016	Rp 64.575.293.348	Rp 549.811.025.919	Rp 131.747.679.415
		2017	Rp 65.108.266.616	Rp 511.282.786.918	Rp 124.950.579.564
		2018	Rp 74.435.277.572	Rp 524.827.102.453	Rp 120.913.101.870
		2019	Rp 63.721.315.845	Rp 547.449.083.975	Rp 96.299.502.046
57	Agam	2015	Rp 90.197.210.297	Rp 889.165.309.247	Rp 161.073.310.923
		2016	Rp 102.597.441.502	Rp 1.107.755.408.357	Rp 192.852.825.223
		2017	Rp 161.539.091.438	Rp 1.078.038.915.777	Rp 270.015.746.556
		2018	Rp 99.684.205.378	Rp 1.092.066.030.986	Rp 212.319.559.024
		2019	Rp 123.658.588.901	Rp 1.143.589.671.865	Rp 280.827.672.997
58	Dharmasraya	2015	Rp 56.694.339.206	Rp 604.520.411.648	Rp 247.439.575.452
		2016	Rp 56.453.463.178	Rp 740.796.803.359	Rp 265.428.155.993
		2017	Rp 98.937.393.387	Rp 696.906.890.931	Rp 270.152.051.057
		2018	Rp 84.116.203.861	Rp 708.972.421.763	Rp 215.526.960.835
		2019	Rp 78.882.919.152	Rp 761.630.742.880	Rp 226.598.089.916
59	Kepulauan Mentawai	2015	Rp 42.784.854.485	Rp 692.519.176.491	Rp 251.482.269.521
		2016	Rp 41.948.183.104	Rp 820.329.757.364	Rp 277.846.773.616
		2017	Rp 67.862.676.598	Rp 731.385.235.582	Rp 313.680.549.806
		2018	Rp 45.358.184.274	Rp 776.846.474.070	Rp 222.209.809.952
		2019	Rp 40.203.645.066	Rp 818.830.711.081	Rp 297.673.042.277
60	Limah Puluh Kota	2015	Rp 62.932.793.303	Rp 824.555.125.662	Rp 174.180.411.287
		2016	Rp 68.060.267.475	Rp 1.010.102.022.133	Rp 252.966.502.833
		2017	Rp 119.771.917.448	Rp 992.052.782.677	Rp 233.117.426.709
		2018	Rp 73.440.842.296	Rp 997.518.221.045	Rp 232.636.608.714
		2019	Rp 86.168.153.332	Rp 1.016.024.131.815	Rp 262.910.621.752
61	Padang Pariaman	2015	Rp 72.995.950.834	Rp 865.978.893.800	Rp 210.056.212.093
		2016	Rp 72.859.394.000	Rp 1.128.367.944.854	Rp 306.496.631.370
		2017	Rp 141.310.805.691	Rp 1.059.564.099.184	Rp 367.120.206.951
		2018	Rp 84.502.722.191	Rp 1.087.008.037.363	Rp 262.953.914.380
		2019	Rp 101.607.521.617	Rp 1.139.643.299.241	Rp 263.182.047.537

62	Pasaman	2015	Rp 79.684.485.786	Rp 650.214.817.217	Rp 176.591.156.389
		2016	Rp 88.862.264.200	Rp 771.304.699.588	Rp 234.016.497.145
		2017	Rp 142.748.233.335	Rp 767.064.865.457	Rp 184.936.891.009
		2018	Rp 100.067.231.369	Rp 755.591.287.380	Rp 140.813.280.729
		2019	Rp 98.595.691.294	Rp 785.186.900.144	Rp 125.911.245.748
63	Pasaman Barat	2015	Rp 69.128.838.735	Rp 735.452.586.964	Rp 193.334.659.071
		2016	Rp 91.174.717.113	Rp 871.533.936.589	Rp 267.700.818.987
		2017	Rp 158.920.863.868	Rp 835.170.390.501	Rp 263.065.434.073
		2018	Rp 104.523.535.551	Rp 887.119.463.273	Rp 327.268.292.281
		2019	Rp 104.071.607.688	Rp 919.575.539.335	Rp 261.167.537.747
64	Pesisir Selatan	2015	Rp 107.992.020.496	Rp 931.058.539.525	Rp 277.118.287.015
		2016	Rp 108.915.294.627	Rp 1.138.073.082.431	Rp 283.986.331.635
		2017	Rp 178.145.381.104	Rp 1.109.254.189.839	Rp 255.009.252.343
		2018	Rp 123.906.524.443	Rp 1.120.389.365.019	Rp 257.286.726.595
		2019	Rp 134.804.594.146	Rp 1.213.725.540.008	Rp 324.875.576.584
65	Sijunjung	2015	Rp 65.008.435.921	Rp 618.274.198.360	Rp 167.498.683.731
		2016	Rp 76.833.967.628	Rp 725.803.701.284	Rp 243.956.925.766
		2017	Rp 107.915.719.073	Rp 710.605.073.934	Rp 189.756.100.095
		2018	Rp 79.055.940.215	Rp 700.524.757.858	Rp 205.818.505.036
		2019	Rp 83.906.454.917	Rp 737.765.488.567	Rp 204.210.889.586
66	Solok	2015	Rp 55.610.732.918	Rp 802.966.625.338	Rp 179.309.289.671
		2016	Rp 58.803.477.233	Rp 967.169.382.111	Rp 205.316.599.065
		2017	Rp 113.269.815.423	Rp 911.897.537.818	Rp 204.616.665.888
		2018	Rp 68.301.516.506	Rp 936.193.160.458	Rp 167.162.730.044
		2019	Rp 74.595.911.759	Rp 980.735.199.266	Rp 194.815.396.238
67	Solok Selatan	2015	Rp 41.207.396.926	Rp 569.880.541.076	Rp 215.458.902.302
		2016	Rp 51.138.125.857	Rp 620.289.938.629	Rp 234.219.029.497
		2017	Rp 75.505.887.737	Rp 641.966.526.857	Rp 230.734.913.890
		2018	Rp 60.545.296.360	Rp 636.215.119.814	Rp 196.414.321.045
		2019	Rp 67.842.785.844	Rp 695.366.633.765	Rp 210.375.471.214
68	Tanah Datar	2015	Rp 112.072.726.548	Rp 766.634.110.847	Rp 137.034.861.538
		2016	Rp 118.971.143.694	Rp 963.487.573.519	Rp 187.784.871.556
		2017	Rp 172.812.022.624	Rp 928.980.499.474	Rp 197.916.990.531
		2018	Rp 115.914.187.914	Rp 944.906.738.207	Rp 165.134.741.678
		2019	Rp 129.785.828.001	Rp 984.486.247.225	Rp 202.885.384.184

69	Bukittinggi	2015	Rp 66.027.359.716	Rp 449.872.722.059	Rp 69.174.912.576
		2016	Rp 71.303.781.736	Rp 547.829.867.933	Rp 80.926.569.091
		2017	Rp 102.375.931.333	Rp 516.228.868.598	Rp 115.736.552.854
		2018	Rp 101.936.792.226	Rp 523.061.869.776	Rp 178.010.817.194
		2019	Rp 111.896.596.611	Rp 552.063.924.512	Rp 187.986.455.096
70	Padang	2015	Rp 370.413.732.165	Rp 1.169.080.233.009	Rp 287.576.579.422
		2016	Rp 391.925.662.646	Rp 1.435.966.268.657	Rp 408.310.076.287
		2017	Rp 548.653.179.266	Rp 1.360.290.810.177	Rp 397.843.408.958
		2018	Rp 487.937.882.411	Rp 1.427.929.632.546	Rp 419.839.593.968
		2019	Rp 546.108.570.689	Rp 1.524.369.871.667	Rp 491.009.055.949
71	Padang Panjang	2015	Rp 67.035.654.311	Rp 381.194.551.009	Rp 111.190.406.986
		2016	Rp 70.357.124.066	Rp 461.720.096.046	Rp 146.899.921.493
		2017	Rp 88.837.033.625	Rp 439.519.041.267	Rp 211.509.246.179
		2018	Rp 79.752.372.829	Rp 442.112.700.653	Rp 125.026.313.035
		2019	Rp 77.323.150.456	Rp 453.085.922.598	Rp 98.188.781.547
72	Pariaman	2015	Rp 29.897.289.136	Rp 453.544.697.798	Rp 170.191.189.290
		2016	Rp 29.680.784.158	Rp 533.629.510.758	Rp 178.374.780.971
		2017	Rp 30.881.846.112	Rp 515.176.988.201	Rp 153.293.150.204
		2018	Rp 32.213.303.036	Rp 509.927.165.546	Rp 132.430.598.581
		2019	Rp 36.665.174.233	Rp 526.506.564.742	Rp 156.394.642.681
73	Payakumbuh	2015	Rp 100.646.557.921	Rp 508.627.289.659	Rp 164.671.738.972
		2016	Rp 87.445.115.902	Rp 601.830.078.683	Rp 161.516.312.333
		2017	Rp 116.596.479.804	Rp 596.081.338.107	Rp 176.632.639.124
		2018	Rp 94.287.442.042	Rp 565.250.189.018	Rp 149.445.424.991
		2019	Rp 104.070.234.422	Rp 609.589.230.923	Rp 182.218.048.171
74	Sawahlunto	2015	Rp 52.268.500.528	Rp 418.033.655.447	Rp 135.443.678.880
		2016	Rp 53.388.553.982	Rp 509.630.596.269	Rp 132.832.856.170
		2017	Rp 62.459.787.921	Rp 490.823.048.329	Rp 123.743.149.829
		2018	Rp 47.227.132.335	Rp 458.504.259.105	Rp 77.527.748.798
		2019	Rp 57.170.993.865	Rp 495.141.841.033	Rp 94.384.258.018
75	Solok	2015	Rp 36.630.731.403	Rp 415.678.886.750	Rp 96.285.406.801
		2016	Rp 42.117.207.737	Rp 508.172.245.470	Rp 136.028.384.722
		2017	Rp 41.852.774.058	Rp 472.503.110.300	Rp 140.483.121.184
		2018	Rp 40.742.809.270	Rp 481.477.263.215	Rp 159.588.101.391
		2019	Rp 41.651.875.802	Rp 508.925.258.581	Rp 115.013.289.927

76	Bengkalis	2015	Rp 258.889.532.216	Rp 2.103.454.884.913	Rp 1.815.703.950.258
		2016	Rp 199.026.650.970	Rp 2.332.553.477.181	Rp 765.742.945.445
		2017	Rp 271.865.595.908	Rp 2.591.358.516.446	Rp 982.284.446.696
		2018	Rp 319.280.511.092	Rp 2.783.227.694.772	Rp 903.407.348.786
		2019	Rp 226.245.884.732	Rp 3.192.463.207.633	Rp 1.108.175.580.895
77	Indaragiri Hilir	2015	Rp 131.091.134.793	Rp 1.235.567.369.318	Rp 358.399.628.402
		2016	Rp 132.442.800.061	Rp 1.370.286.058.678	Rp 415.379.003.204
		2017	Rp 214.785.344.625	Rp 1.283.445.695.586	Rp 353.139.989.072
		2018	Rp 157.482.353.687	Rp 1.363.810.136.635	Rp 213.660.286.725
		2019	Rp 153.746.222.015	Rp 1.482.961.894.630	Rp 257.568.468.821
78	Indaragiri Hulu	2015	Rp 125.142.263.393	Rp 961.363.314.575	Rp 320.878.860.838
		2016	Rp 98.755.681.239	Rp 1.047.830.716.949	Rp 246.977.757.399
		2017	Rp 159.665.857.817	Rp 1.052.046.321.546	Rp 247.686.767.181
		2018	Rp 111.900.731.074	Rp 1.057.923.905.130	Rp 138.092.690.423
		2019	Rp 118.978.915.053	Rp 1.209.058.944.326	Rp 339.388.263.703
79	Kampar	2015	Rp 221.377.671.792	Rp 1.508.466.852.315	Rp 490.400.606.381
		2016	Rp 162.363.324.671	Rp 1.571.302.634.040	Rp 377.690.961.517
		2017	Rp 316.432.572.652	Rp 1.525.027.088.899	Rp 352.062.836.537
		2018	Rp 229.382.839.238	Rp 1.676.335.496.809	Rp 315.557.219.866
		2019	Rp 262.882.861.943	Rp 1.957.011.119.683	Rp 578.989.100.174
80	Kepulauan Meranti	2015	Rp 54.827.443.833	Rp 705.328.656.886	Rp 196.504.907.989
		2016	Rp 52.413.812.665	Rp 746.499.112.733	Rp 255.389.923.066
		2017	Rp 80.941.082.098	Rp 724.244.592.606	Rp 173.835.960.831
		2018	Rp 68.006.356.887	Rp 781.602.610.877	Rp 169.802.769.847
		2019	Rp 79.075.541.784	Rp 884.353.281.057	Rp 290.696.070.450
81	Kuantan Singingi	2015	Rp 70.433.899.294	Rp 862.582.267.647	Rp 326.735.746.648
		2016	Rp 62.176.252.836	Rp 922.756.142.447	Rp 178.016.363.176
		2017	Rp 108.028.330.072	Rp 962.852.753.994	Rp 203.273.640.916
		2018	Rp 77.084.865.914	Rp 1.019.448.411.906	Rp 196.801.855.382
		2019	Rp 78.575.317.037	Rp 1.089.904.306.784	Rp 327.963.604.578
82	Pelalawan	2015	Rp 109.085.093.813	Rp 969.420.964.577	Rp 453.584.905.313
		2016	Rp 107.077.951.961	Rp 1.099.078.219.705	Rp 454.684.129.007
		2017	Rp 181.808.597.389	Rp 1.076.802.235.591	Rp 254.665.598.183
		2018	Rp 136.697.900.751	Rp 1.088.778.596.712	Rp 161.281.235.360
		2019	Rp 155.693.478.613	Rp 1.219.439.285.252	Rp 255.820.334.183

83	Rokan Hilir	2015	Rp 111.332.082.812	Rp 1.274.401.445.067	Rp 465.846.934.162
		2016	Rp 94.904.441.305	Rp 1.255.591.163.021	Rp 399.644.132.462
		2017	Rp 175.970.132.715	Rp 1.093.461.055.498	Rp 339.735.033.996
		2018	Rp 108.053.525.787	Rp 1.339.250.669.452	Rp 217.557.275.316
		2019	Rp 116.551.567.672	Rp 1.660.077.683.238	Rp 315.944.465.620
84	Siak	2015	Rp 357.281.966.303	Rp 1.218.107.619.715	Rp 906.133.668.127
		2016	Rp 164.325.689.824	Rp 1.251.262.083.479	Rp 252.760.590.624
		2017	Rp 267.443.708.496	Rp 1.156.043.825.678	Rp 216.462.854.439
		2018	Rp 233.291.586.563	Rp 1.388.860.212.601	Rp 179.484.354.900
		2019	Rp 264.366.914.898	Rp 1.617.648.976.879	Rp 371.026.006.546
85	Dumai	2015	Rp 162.535.866.590	Rp 587.041.598.753	Rp 143.885.869.917
		2016	Rp 192.760.175.686	Rp 689.119.140.681	Rp 200.116.034.395
		2017	Rp 265.472.760.818	Rp 755.592.886.590	Rp 272.620.881.158
		2018	Rp 279.654.914.442	Rp 810.190.491.050	Rp 174.224.234.182
		2019	Rp 291.620.030.784	Rp 856.129.356.781	Rp 265.822.240.193
86	Pekanbaru	2015	Rp 492.511.317.377	Rp 1.085.937.598.521	Rp 821.626.769.354
		2016	Rp 482.031.164.869	Rp 1.230.454.952.529	Rp 450.341.770.647
		2017	Rp 697.466.656.720	Rp 1.222.248.651.620	Rp 466.573.845.628
		2018	Rp 592.707.161.812	Rp 1.277.237.744.503	Rp 531.148.865.175
		2019	Rp 710.129.196.651	Rp 1.304.793.092.679	Rp 529.533.719.917
87	Rokan Hulu	2015	Rp 82.773.884.998	Rp 907.970.677.352	Rp 279.249.015.680
		2016	Rp 95.812.025.222	Rp 1.053.662.417.259	Rp 252.866.981.471
		2017	Rp 199.642.462.770	Rp 1.012.398.394.269	Rp 330.432.257.917
		2018	Rp 85.734.030.158	Rp 1.119.942.706.465	Rp 353.287.341.468
		2019	Rp 160.217.013.093	Rp 1.233.000.357.963	Rp 400.078.364.592
88	Batang Hari	2015	Rp 68.925.708.044	Rp 686.321.089.545	Rp 156.606.938.746
		2016	Rp 73.516.765.629	Rp 892.440.394.901	Rp 172.177.198.399
		2017	Rp 87.929.338.843	Rp 928.625.426.992	Rp 206.581.778.664
		2018	Rp 98.808.531.272	Rp 888.246.032.876	Rp 148.206.782.170
		2019	Rp 91.567.449.215	Rp 963.265.456.033	Rp 251.118.803.753
89	Bungo	2015	Rp 105.277.046.266	Rp 734.988.352.007	Rp 172.423.482.338
		2016	Rp 114.818.287.091	Rp 866.039.389.648	Rp 110.596.439.444
		2017	Rp 183.133.678.700	Rp 909.063.377.858	Rp 156.057.609.902
		2018	Rp 133.848.451.059	Rp 917.465.257.753	Rp 203.211.813.790
		2019	Rp 140.327.484.503	Rp 961.103.622.312	Rp 234.629.991.487

90	Kerinci	2015	Rp 70.462.409.628	Rp 657.794.535.662	Rp 177.166.546.221
		2016	Rp 80.850.837.270	Rp 788.040.379.762	Rp 198.781.596.688
		2017	Rp 85.760.743.969	Rp 799.918.426.092	Rp 218.905.091.227
		2018	Rp 80.481.173.935	Rp 802.840.678.513	Rp 191.868.186.332
		2019	Rp 85.903.587.128	Rp 849.466.651.198	Rp 293.806.785.964
91	Merangin	2015	Rp 76.949.402.914	Rp 851.727.173.069	Rp 291.298.391.552
		2016	Rp 75.158.423.417	Rp 1.038.315.600.788	Rp 340.726.304.176
		2017	Rp 86.702.264.469	Rp 979.514.011.117	Rp 301.758.120.676
		2018	Rp 89.304.559.028	Rp 978.236.523.005	Rp 207.241.385.868
		2019	Rp 106.160.970.250	Rp 1.039.700.153.727	Rp 226.728.661.843
92	Muaro Jambi	2015	Rp 63.662.790.891	Rp 762.240.159.225	Rp 302.531.328.269
		2016	Rp 60.630.301.196	Rp 852.860.226.856	Rp 268.531.407.849
		2017	Rp 77.926.789.169	Rp 859.324.679.526	Rp 368.236.687.926
		2018	Rp 90.305.498.362	Rp 978.668.219.537	Rp 292.728.025.309
		2019	Rp 93.794.601.240	Rp 1.042.395.593.185	Rp 322.194.053.216
93	Sarolangun	2015	Rp 85.372.961.961	Rp 698.857.421.919	Rp 284.426.210.538
		2016	Rp 92.425.177.747	Rp 802.410.845.100	Rp 233.984.942.630
		2017	Rp 85.185.129.614	Rp 768.388.109.947	Rp 247.349.222.340
		2018	Rp 118.828.593.872	Rp 848.082.192.196	Rp 215.169.066.764
		2019	Rp 94.621.365.981	Rp 972.212.674.454	Rp 414.970.363.981
94	Tanjung Jabung Barat	2015	Rp 68.040.011.773	Rp 716.830.046.715	Rp 268.727.473.625
		2016	Rp 85.934.484.185	Rp 1.049.466.185.966	Rp 225.111.185.555
		2017	Rp 98.779.362.060	Rp 1.037.376.490.573	Rp 418.013.170.912
		2018	Rp 101.840.551.797	Rp 1.096.229.881.989	Rp 419.657.879.438
		2019	Rp 120.220.481.668	Rp 1.306.126.943.112	Rp 697.230.245.559
95	Tanjung Jabung Timur	2015	Rp 38.473.606.893	Rp 733.466.795.933	Rp 279.110.877.714
		2016	Rp 43.935.743.484	Rp 968.373.794.264	Rp 365.777.793.530
		2017	Rp 76.775.700.726	Rp 896.259.003.727	Rp 275.104.187.921
		2018	Rp 49.607.102.060	Rp 905.488.095.447	Rp 312.956.563.764
		2019	Rp 53.919.302.033	Rp 959.088.814.692	Rp 328.872.997.320
96	Tebo	2015	Rp 62.037.299.487	Rp 654.487.852.457	Rp 245.745.363.137
		2016	Rp 60.938.006.779	Rp 828.097.862.720	Rp 233.969.731.320
		2017	Rp 68.406.126.028	Rp 780.757.475.197	Rp 233.688.059.239
		2018	Rp 76.160.028.618	Rp 806.443.699.184	Rp 258.990.826.317
		2019	Rp 83.236.373.472	Rp 842.319.739.490	Rp 269.093.691.376

97	Jambi	2015	Rp 263.925.520.119	Rp 858.677.840.368	Rp 385.128.743.988
		2016	Rp 287.525.214.004	Rp 1.177.857.284.208	Rp 424.195.954.889
		2017	Rp 397.327.847.289	Rp 1.013.005.895.282	Rp 419.316.595.968
		2018	Rp 338.891.882.592	Rp 1.110.714.904.091	Rp 445.809.162.048
		2019	Rp 393.429.595.383	Rp 1.110.177.033.331	Rp 432.100.003.926
98	Sungai Penuh	2015	Rp 36.246.931.834	Rp 452.260.982.970	Rp 177.939.732.342
		2016	Rp 36.632.476.994	Rp 590.421.034.074	Rp 212.004.597.663
		2017	Rp 31.420.979.313	Rp 561.309.821.992	Rp 173.331.166.027
		2018	Rp 34.184.049.669	Rp 571.604.008.621	Rp 194.643.207.113
		2019	Rp 34.900.741.628	Rp 608.668.101.595	Rp 176.535.574.208
99	Banyuasin	2015	Rp 96.219.655.177	Rp 1.250.448.121.908	Rp 439.408.057.812
		2016	Rp 104.218.245.467	Rp 1.515.017.782.501	Rp 368.488.105.881
		2017	Rp 125.984.368.888	Rp 1.438.187.888.419	Rp 303.104.686.232
		2018	Rp 140.602.072.490	Rp 1.449.491.766.246	Rp 266.429.179.609
		2019	Rp 200.616.348.310	Rp 1.593.797.202.363	Rp 424.906.674.189
100	Empat Lawang	2015	Rp 27.118.381.319	Rp 554.055.946.000	Rp 279.782.691.976
		2016	Rp 22.347.811.179	Rp 638.525.188.889	Rp 198.992.372.066
		2017	Rp 68.806.714.654	Rp 681.697.460.037	Rp 202.980.530.869
		2018	Rp 32.217.492.489	Rp 745.236.496.901	Rp 248.395.272.382
		2019	Rp 41.672.141.481	Rp 708.650.914.858	Rp 253.146.607.390
101	Lahat	2015	Rp 189.584.741.246	Rp 1.045.949.827.405	Rp 471.385.151.682
		2016	Rp 184.972.794.851	Rp 1.060.149.677.720	Rp 184.972.794.851
		2017	Rp 164.495.177.552	Rp 1.211.669.907.270	Rp 341.994.209.461
		2018	Rp 112.571.296.475	Rp 1.377.663.737.906	Rp 309.562.329.259
		2019	Rp 141.161.144.249	Rp 1.609.981.025.056	Rp 396.808.861.445,88
102	Muara Enim	2015	Rp 178.245.088.811	Rp 1.530.146.920.272	Rp 600.742.048.393
		2016	Rp 150.912.522.963	Rp 1.666.514.246.481	Rp 566.871.495.939
		2017	Rp 226.929.233.265	Rp 1.749.209.635.325	Rp 530.346.575.503
		2018	Rp 232.468.708.584	Rp 1.792.510.139.858	Rp 556.628.833.664
		2019	Rp 303.296.321.152	Rp 2.155.493.438.671	Rp 888.469.027.757
103	Musi Banyuasin	2015	Rp 181.795.444.466	Rp 1.723.626.133.366	Rp 408.512.810.287
		2016	Rp 169.012.416.526	Rp 2.327.685.024.463	Rp 569.702.257.607
		2017	Rp 209.410.035.753	Rp 2.284.442.011.973	Rp 699.529.017.374
		2018	Rp 210.238.037.284	Rp 2.399.445.440.610	Rp 871.952.810.973
		2019	Rp 286.594.847.516	Rp 3.103.333.197.302	Rp 1.102.419.234.361

104	Musi Rawas	2015	Rp	97.998.166.925	Rp	1.056.225.067.314	Rp	448.752.421.382
		2016	Rp	96.743.870.855	Rp	1.324.817.679.264	Rp	432.324.100.108
		2017	Rp	151.594.082.635	Rp	1.159.387.392.934	Rp	317.467.274.462
		2018	Rp	106.289.385.326	Rp	1.330.725.122.188	Rp	361.982.548.505
		2019	Rp	128.563.715.133	Rp	1.422.659.685.092	Rp	430.926.194.698
105	Musi Rawas Utara	2015	Rp	29.172.475.400	Rp	514.340.084.250	Rp	317.372.259.744
		2016	Rp	32.174.860.897	Rp	682.014.657.016	Rp	355.012.452.385
		2017	Rp	57.580.992.081	Rp	611.766.876.193	Rp	279.488.044.078
		2018	Rp	30.141.830.710	Rp	735.356.800.546	Rp	323.942.165.957
		2019	Rp	37.574.950.356	Rp	763.442.661.315	Rp	394.412.850.373
106	Ogan Ilir	2015	Rp	42.843.410.496	Rp	754.139.402.977	Rp	210.013.463.224
		2016	Rp	109.762.617.128	Rp	940.136.284.368	Rp	222.327.614.406
		2017	Rp	95.711.837.736	Rp	1.011.195.133.612	Rp	345.998.047.710
		2018	Rp	55.362.963.113	Rp	1.049.790.700.966	Rp	275.666.163.928
		2019	Rp	86.150.568.158	Rp	1.162.384.119.643	Rp	323.235.226.236
107	Ogan Komering Ilir	2015	Rp	110.225.039.890	Rp	1.255.126.807.195	Rp	474.153.706.814
		2016	Rp	108.992.378.485	Rp	1.472.007.196.948	Rp	560.990.403.527
		2017	Rp	222.961.997.724	Rp	1.493.738.924.948	Rp	473.963.601.892
		2018	Rp	235.946.143.259	Rp	1.603.716.516.140	Rp	302.186.496.005
		2019	Rp	195.401.652.978	Rp	1.610.231.422.459	Rp	626.423.290.261
108	Ogan Komering Ulu	2015	Rp	98.756.154.905	Rp	773.046.266.128	Rp	223.476.288.576
		2016	Rp	87.578.643.416	Rp	939.928.247.711	Rp	167.777.810.850
		2017	Rp	172.013.164.446	Rp	1.031.818.532.773	Rp	338.867.463.782
		2018	Rp	156.622.053.791	Rp	1.030.583.563.489	Rp	328.753.610.069
		2019	Rp	145.563.548.513	Rp	1.116.968.931.247	Rp	348.992.623.346
109	Ogan Komering Ulu Selatan	2015	Rp	38.197.172.490	Rp	716.609.379.257	Rp	372.452.630.920
		2016	Rp	35.696.934.794	Rp	866.483.544.547	Rp	373.153.188.095
		2017	Rp	89.506.598.777	Rp	871.408.759.446	Rp	292.933.440.940
		2018	Rp	42.993.134.752	Rp	910.648.906.804	Rp	311.605.526.136
		2019	Rp	57.669.139.990	Rp	946.979.470.007	Rp	381.552.391.906
110	Ogan komering Ulu Timur	2015	Rp	64.280.630.983	Rp	922.913.019.434	Rp	207.580.658.411
		2016	Rp	69.357.438.647	Rp	1.183.323.558.041	Rp	321.249.671.402
		2017	Rp	77.706.784.296	Rp	1.109.643.390.143	Rp	291.446.226.750
		2018	Rp	85.235.157.421	Rp	1.170.665.910.633	Rp	278.116.679.110
		2019	Rp	99.017.727.658	Rp	1.224.659.839.616	Rp	508.497.584.655

111	Pali	2015	Rp 22.025.377.405	Rp 516.462.085.000	Rp 312.210.186.115
		2016	Rp 26.350.314.142	Rp 655.635.308.425	Rp 351.124.240.317
		2017	Rp 56.934.787.816	Rp 801.951.800.923	Rp 393.154.584.868
		2018	Rp 74.392.980.925	Rp 1.022.376.727.650	Rp 622.813.258.526
		2019	Rp 84.794.229.883	Rp 914.755.584.675	Rp 764.119.060.810
112	Lubuk Linggau	2015	Rp 66.725.204.496	Rp 582.390.591.350	Rp 215.943.462.860
		2016	Rp 75.797.426.519	Rp 719.715.977.118	Rp 205.417.239.958
		2017	Rp 115.521.939.796	Rp 715.153.298.144	Rp 237.003.593.139
		2018	Rp 105.606.815.787	Rp 706.155.116.266	Rp 209.920.267.732
		2019	Rp 166.689.280.993	Rp 763.615.315.295	Rp 254.283.962.721
113	Pagar Alam	2015	Rp 53.418.726.125	Rp 520.026.891.800	Rp 276.894.553.975
		2016	Rp 51.113.017.420	Rp 611.992.695.831	Rp 246.648.045.186
		2017	Rp 65.538.892.445	Rp 680.367.025.766	Rp 195.241.879.541
		2018	Rp 73.600.344.354	Rp 636.317.733.383	Rp 92.576.062.279
		2019	Rp 60.064.187.982	Rp 640.693.974.903	Rp 216.250.532.961
114	Palembang	2015	Rp 736.926.505.929	Rp 1.461.824.825.500	Rp 628.995.346.844
		2016	Rp 781.413.947.765	Rp 1.863.736.788.542	Rp 577.697.336.830
		2017	Rp 1.091.704.605.855	Rp 1.908.214.621.886	Rp 857.095.134.848
		2018	Rp 953.302.082.628	Rp 1.990.567.989.526	Rp 851.367.126.024
		2019	Rp 1.081.114.690.868	Rp 1.968.123.627.878	Rp 1.115.910.029.299
115	Prabumulih	2015	Rp 72.236.033.965	Rp 581.085.641.600	Rp 299.372.657.603
		2016	Rp 86.253.193.267	Rp 735.605.657.838	Rp 228.274.659.622
		2017	Rp 119.192.660.726	Rp 674.043.091.251	Rp 162.394.102.450
		2018	Rp 90.910.521.066	Rp 738.071.836.484	Rp 119.551.241.841
		2019	Rp 100.975.564.958	Rp 861.847.458.222	Rp 311.715.302.708
116	Lampung Barat	2015	Rp 46.434.649.521	Rp 639.899.114.768	Rp 302.606.112.518
		2016	Rp 49.078.910.604	Rp 826.678.258.881	Rp 310.063.349.774
		2017	Rp 46.789.226.369	Rp 773.064.817.356	Rp 348.669.021.805
		2018	Rp 50.471.541.308	Rp 854.830.511.647	Rp 290.210.241.212
		2019	Rp 65.267.416.664	Rp 791.712.917.260	Rp 220.871.333.553
117	Lampung Selatan	2015	Rp 161.645.901.756	Rp 1.024.584.932.873	Rp 342.441.283.391
		2016	Rp 184.063.778.379	Rp 1.221.016.749.322	Rp 470.122.016.306
		2017	Rp 206.061.231.196	Rp 1.286.922.564.041	Rp 539.655.355.207
		2018	Rp 215.411.464.185	Rp 1.203.772.824.191	Rp 383.352.881.955
		2019	Rp 275.464.317.224	Rp 1.412.941.259.230	Rp 374.849.892.710

118	Lampung Tengah	2015	Rp 116.343.189.031	Rp 1.377.672.256.118	Rp 309.313.410.776
		2016	Rp 137.871.550.591	Rp 1.825.749.300.391	Rp 422.941.784.576
		2017	Rp 147.048.201.164	Rp 1.722.465.741.922	Rp 454.948.982.528
		2018	Rp 165.414.825.486	Rp 1.808.254.062.561	Rp 372.907.489.490
		2019	Rp 193.634.175.310	Rp 1.797.258.034.498	Rp 347.461.051.828
119	Lampung Timur	2015	Rp 84.496.936.514	Rp 1.164.854.841.356	Rp 255.907.955.827
		2016	Rp 94.924.247.670	Rp 1.555.333.164.796	Rp 364.083.387.168
		2017	Rp 111.886.192.444	Rp 1.489.412.947.931	Rp 321.795.859.201
		2018	Rp 125.035.523.317	Rp 1.494.906.155.709	Rp 285.430.669.668
		2019	Rp 147.527.535.828	Rp 1.475.128.391.944	Rp 204.551.856.451
120	Lampung Utara	2015	Rp 93.239.503.920	Rp 989.119.165.468	Rp 289.834.333.621
		2016	Rp 98.607.164.917	Rp 1.238.244.753.562	Rp 348.790.775.688
		2017	Rp 103.970.703.713	Rp 1.246.229.672.491	Rp 399.975.479.972
		2018	Rp 102.289.605.031	Rp 1.206.059.195.860	Rp 193.419.166.707
		2019	Rp 102.587.471.150	Rp 1.244.666.930.848	Rp 120.762.726.596
121	Mesuji	2015	Rp 18.713.301.103	Rp 532.040.690.623	Rp 158.523.550.165
		2016	Rp 27.783.046.527	Rp 619.201.138.819	Rp 195.511.599.747
		2017	Rp 22.114.018.973	Rp 625.590.670.187	Rp 168.470.345.705
		2018	Rp 33.206.360.524	Rp 615.640.647.754	Rp 240.570.374.862
		2019	Rp 45.620.663.052	Rp 632.875.492.470	Rp 215.958.059.150
122	Pesawaran	2015	Rp 36.869.989.225	Rp 703.509.385.323	Rp 209.321.929.159
		2016	Rp 41.956.848.582	Rp 903.421.879.771	Rp 341.675.571.751
		2017	Rp 50.154.096.623	Rp 930.162.730.630	Rp 327.545.967.014
		2018	Rp 58.265.161.928	Rp 946.460.223.996	Rp 331.941.625.554
		2019	Rp 65.693.842.719	Rp 895.181.485.501	Rp 196.558.845.875
123	Pesisir Barat	2015	Rp 11.597.895.329	Rp 435.162.743.250	Rp 221.869.723.728
		2016	Rp 20.710.860.363	Rp 594.201.363.000	Rp 330.560.839.623
		2017	Rp 42.895.150.221	Rp 596.175.229.649	Rp 314.242.247.261
		2018	Rp 23.481.041.773	Rp 573.283.931.025	Rp 229.701.445.859
		2019	Rp 29.323.369.726	Rp 587.653.782.034	Rp 177.051.033.935
124	Pringsewu	2015	Rp 61.765.136.240	Rp 738.757.806.627	Rp 232.350.914.555
		2016	Rp 68.157.777.766	Rp 915.045.562.159	Rp 285.908.536.409
		2017	Rp 73.405.027.120	Rp 860.970.139.909	Rp 275.362.556.865
		2018	Rp 71.824.582.142	Rp 842.346.040.377	Rp 210.461.061.231
		2019	Rp 86.313.480.516	Rp 859.198.408.361	Rp 188.979.432.216

125	Tanggamus	2015	Rp	21.979.172.078	Rp	880.574.155.270	Rp	219.311.391.980
		2016	Rp	23.712.889.208	Rp	1.136.754.251.165	Rp	227.980.982.026
		2017	Rp	56.177.617.871	Rp	1.130.001.624.786	Rp	248.756.396.921
		2018	Rp	61.714.421.073	Rp	1.323.499.952.931	Rp	172.288.692.875
		2019	Rp	76.050.778.580	Rp	1.423.855.769.136	Rp	241.692.701.030
126	Tulang Bawang	2015	Rp	34.088.549.868	Rp	749.621.353.668	Rp	271.690.077.125
		2016	Rp	26.416.719.390	Rp	862.305.966.258	Rp	321.621.688.871
		2017	Rp	40.931.506.762	Rp	825.407.650.779	Rp	255.811.217.544
		2018	Rp	67.129.955.994	Rp	903.489.249.205	Rp	230.920.819.353
		2019	Rp	82.379.613.623	Rp	823.127.374.731	Rp	137.579.608.309
127	Tulang Bawang Barat	2015	Rp	16.452.748.570	Rp	767.981.297.509	Rp	290.889.388.135
		2016	Rp	20.882.974.136	Rp	715.823.633.663	Rp	384.282.631.094
		2017	Rp	23.142.474.247	Rp	674.301.172.719	Rp	296.453.517.914
		2018	Rp	27.613.469.635	Rp	725.406.877.464	Rp	381.114.574.622
		2019	Rp	32.410.517.401	Rp	661.079.127.842	Rp	269.914.779.195
128	Way Kanan	2015	Rp	47.894.065.833	Rp	780.633.656.977	Rp	288.713.632.194
		2016	Rp	44.346.945.471	Rp	908.456.210.688	Rp	277.836.967.242
		2017	Rp	49.551.283.407	Rp	1.034.484.642.816	Rp	356.898.424.719
		2018	Rp	56.764.985.088	Rp	1.023.173.721.974	Rp	465.984.737.871
		2019	Rp	62.353.560.983	Rp	990.355.064.471	Rp	297.966.565.126
129	Bandar Lampung	2015	Rp	397.547.326.856	Rp	1.016.422.749.268	Rp	245.171.296.284
		2016	Rp	483.379.398.034	Rp	1.376.175.794.387	Rp	199.207.452.554
		2017	Rp	612.809.680.623	Rp	1.408.084.149.250	Rp	489.541.674.474
		2018	Rp	550.275.048.130	Rp	1.364.968.467.075	Rp	425.199.203.339
		2019	Rp	627.296.544.827	Rp	1.400.623.202.255	Rp	310.725.158.723
130	Metro	2015	Rp	127.586.432.960	Rp	494.176.895.418	Rp	165.437.820.059
		2016	Rp	114.436.719.785	Rp	683.788.519.394	Rp	249.046.534.437
		2017	Rp	138.839.408.334	Rp	680.266.516.198	Rp	224.898.840.669
		2018	Rp	132.202.276.039	Rp	624.067.025.412	Rp	224.461.297.229
		2019	Rp	176.199.324.166	Rp	641.899.006.676	Rp	209.524.948.200

LAMPIRAN 6

TABEL PAD KABUPATEN DAN KOTA DI PULAU SUMATRA TAHUN 2015-2019

No	Kabupaten/Kota	2015	2016	2017	2018	2019
1	Aceh Barat	Rp 130.428.452.038	Rp 140.614.479.580	Rp 161.742.858.644	Rp 150.499.049.236	Rp 153.799.291.478
2	Aceh Barat Daya	Rp 61.190.085.187	Rp 80.496.800.924	Rp 91.571.494.831	Rp 83.468.426.211	Rp 90.348.940.272
3	Aceh Besar	Rp 140.533.050.822	Rp 135.284.494.843	Rp 145.464.468.479	Rp 159.480.168.138	Rp 169.896.999.689
4	Aceh Jaya	Rp 40.385.794.988	Rp 45.774.374.212	Rp 52.599.500.274	Rp 58.624.901.408	Rp 72.776.854.246
5	Aceh Selatan	Rp 92.665.502.126	Rp 125.989.165.879	Rp 140.875.267.831	Rp 152.071.795.581	Rp 139.976.611.272
6	Aceh Singkil	Rp 39.375.695.217	Rp 42.057.160.523	Rp 43.441.129.848	Rp 45.289.515.137	Rp 45.264.588.434
7	Aceh Tamiang	Rp 100.454.203.157	Rp 114.051.092.364	Rp 116.246.212.753	Rp 139.261.841.912	Rp 128.905.940.325
8	Aceh Tengah	Rp 157.256.773.343	Rp 156.130.102.890	Rp 163.000.739.413	Rp 150.818.710.372	Rp 170.961.167.591
9	Aceh Tenggara	Rp 59.153.235.036	Rp 61.457.042.356	Rp 60.053.234.222	Rp 80.263.476.272	Rp 117.628.924.351
10	Aceh Timur	Rp 98.704.908.471	Rp 94.337.443.632	Rp 158.492.371.450	Rp 169.455.864.158	Rp 185.148.022.040
11	Aceh Utara	Rp 194.029.636.826	Rp 388.251.800.972	Rp 202.091.566.055	Rp 231.848.856.926	Rp 279.567.720.150
12	Bener Meriah	Rp 58.753.978.243	Rp 66.454.059.144	Rp 82.038.407.024	Rp 67.961.546.855	Rp 86.415.549.452
13	Bireuen	Rp 173.972.782.734	Rp 186.162.575.752	Rp 192.939.858.236	Rp 179.476.248.778	Rp 156.528.834.491
14	Gayo Lues	Rp 41.407.502.305	Rp 46.277.349.072	Rp 60.312.445.602	Rp 48.758.464.134	Rp 51.415.803.751
15	Nagan Raya	Rp 79.938.395.926	Rp 104.202.917.807	Rp 74.051.054.127	Rp 97.118.515.691	Rp 87.625.375.251
16	Pidie Jaya	Rp 44.573.668.037	Rp 45.986.243.650	Rp 47.409.466.485	Rp 57.432.814.784	Rp 68.830.728.478
17	Simeulue	Rp 45.938.231.973	Rp 48.646.141.736	Rp 61.095.183.851	Rp 63.146.021.911	Rp 79.466.327.068
18	Banda Aceh	Rp 209.914.107.301	Rp 258.591.409.669	Rp 270.170.805.366	Rp 246.272.150.485	Rp 235.123.074.164
19	Langsa	Rp 109.116.860.676	Rp 121.369.467.376	Rp 120.138.956.033	Rp 121.316.713.329	Rp 115.244.246.710
20	Lhokseumawe	Rp 56.560.454.282	Rp 56.348.631.473	Rp 62.986.260.103	Rp 65.618.966.778	Rp 61.442.558.520
21	Sabang	Rp 49.602.766.629	Rp 47.776.631.105	Rp 55.081.057.066	Rp 57.188.076.200	Rp 601.196.137.245
22	Subulussalam	Rp 35.905.412.863	Rp 42.314.514.319	Rp 56.519.514.115	Rp 38.955.598.635	Rp 51.810.001.543
23	Pidie	Rp 210.501.782.065	Rp 249.489.453.845	Rp 267.608.101.034	Rp 237.201.958.016	Rp 243.230.774.790
24	Asahan	Rp 98.279.308.429	Rp 119.498.541.230	Rp 123.687.304.879	Rp 142.972.039.821	Rp 149.647.050.442

25	Batu Bara	Rp 51.514.120.899	Rp 59.388.277.802	Rp 66.944.796.375	Rp 64.385.292.862	Rp 129.221.846.897
26	Dairi	Rp 58.791.848.521	Rp 68.003.241.760	Rp 128.489.751.332	Rp 73.906.829.603	Rp 74.360.339.718
27	Deli Serdang	Rp 515.293.681.488	Rp 573.010.351.005	Rp 849.286.151.151	Rp 729.648.594.489	Rp 825.375.281.297
28	Karo	Rp 87.644.277.141	Rp 99.913.302.299	Rp 157.866.720.976	Rp 159.189.197.472	Rp 117.683.657.833
29	Labuhanbatu Selatan	Rp 32.287.183.165	Rp 42.507.928.169	Rp 84.964.450.592	Rp 52.209.768.574	Rp 75.687.647.545
30	Labuhanbatu Utara	Rp 34.499.898.609	Rp 42.296.115.862	Rp 52.690.086.354	Rp 57.010.690.546	Rp 70.122.562.532
31	Langkat	Rp 122.715.359.909	Rp 132.673.213.413	Rp 139.717.647.855	Rp 136.680.578.541	Rp 167.523.076.880
32	Nias	Rp 70.892.590.608	Rp 82.840.434.009	Rp 95.726.167.744	Rp 88.754.606.115	Rp 107.639.139.180
33	Nias Barat	Rp 14.492.750.130	Rp 15.616.742.531	Rp 36.239.996.547	Rp 40.193.008.207	Rp 18.411.235.998
34	Nias Selatan	Rp 15.037.043.953	Rp 16.263.067.492	Rp 18.450.266.700	Rp 19.605.734.782	Rp 25.664.883.761
35	Padang Lawas	Rp 34.707.409.094	Rp 39.341.382.403	Rp 46.509.729.525	Rp 47.455.308.607	Rp 52.067.312.091
36	Padang Lawas Utara	Rp 26.446.077.261	Rp 30.453.223.133	Rp 74.524.919.693	Rp 74.306.097.500	Rp 42.929.111.658
37	Pakpak Bharat	Rp 15.880.335.074	Rp 18.748.805.556	Rp 29.320.487.447	Rp 20.061.207.923	Rp 33.915.957.645
38	Samosir	Rp 34.297.498.964	Rp 39.268.200.307	Rp 72.228.748.255	Rp 47.446.623.389	Rp 60.497.449.963
39	Serdang Bedagai	Rp 80.141.929.203	Rp 108.062.776.483	Rp 103.711.290.229	Rp 194.382.972.213	Rp 143.144.170.557
40	Simalungun	Rp 111.893.282.770	Rp 132.560.800.826	Rp 252.663.015.527	Rp 164.107.850.129	Rp 191.940.130.095
41	Tapanuli Selatan	Rp 109.349.451.811	Rp 76.640.675.840	Rp 104.722.613.740	Rp 140.044.217.234	Rp 167.458.157.940
42	Tapanuli Tengah	Rp 65.224.735.174	Rp 71.758.981.995	Rp 72.710.308.590	Rp 76.660.883.410	Rp 88.441.123.323
43	Tapanuli Utara	Rp 82.790.862.061	Rp 94.783.154.638	Rp 162.441.906.093	Rp 105.656.762.964	Rp 113.990.759.582
44	Toba Samosir	Rp 30.952.610.879	Rp 54.391.304.393	Rp 54.840.823.646	Rp 52.298.960.803	Rp 68.046.526.605
45	Binjai	Rp 78.327.792.811	Rp 97.339.497.584	Rp 139.217.612.424	Rp 135.870.920.433	Rp 108.954.526.370
46	Gunungsitoli	Rp 24.334.650.845	Rp 29.185.403.160	Rp 29.769.903.264	Rp 29.456.354.563	Rp 32.209.121.389
47	Medan	Rp 1.489.723.189.089	Rp 1.535.309.574.015	Rp 1.739.756.922.634	Rp 1.636.204.514.683	Rp 1.829.665.882.248
48	Padangsidempuan	Rp 67.730.738.638	Rp 78.417.755.706	Rp 109.640.419.280	Rp 75.063.575.093	Rp 87.432.283.185
49	Pematangsiantar	Rp 95.557.865.286	Rp 101.582.731.954	Rp 105.445.993.204	Rp 137.052.839.193	Rp 125.018.502.648
50	Tebing Tinggi	Rp 82.410.053.810	Rp 94.058.491.717	Rp 113.222.874.687	Rp 114.048.354.143	Rp 105.239.918.352
51	Humbang Hasundutan	Rp 35.237.805.568	Rp 42.096.841.517	Rp 85.598.357.027	Rp 92.735.853.813	Rp 73.757.931.630
52	Labuhan Batu	Rp 101.023.216.259	Rp 125.925.267.724	Rp 124.674.017.375	Rp 162.794.472.017	Rp 175.335.685.317
53	Mandailing Natal	Rp 63.847.458.130	Rp 70.405.901.828	Rp 80.581.688.937	Rp 84.809.923.496	Rp 98.758.815.328
54	Nias Utara	Rp 16.923.883.730	Rp 23.852.634.632	Rp 20.107.246.943	Rp 50.395.504.636	Rp 57.961.363.630
55	Sibolga	Rp 60.486.785.863	Rp 68.537.902.708	Rp 103.672.203.938	Rp 81.245.733.812	Rp 69.312.217.832

56	Tanjung Balai	Rp 57.094.161.596	Rp 64.575.293.348	Rp 65.108.266.616	Rp 74.435.277.572	Rp 63.721.315.845
57	Agam	Rp 90.197.210.297	Rp 102.597.441.502	Rp 161.539.091.438	Rp 99.684.205.378	Rp 123.658.588.901
58	Dharmasraya	Rp 56.694.339.206	Rp 56.453.463.178	Rp 98.937.393.387	Rp 84.116.203.861	Rp 78.882.919.152
59	Kepulauan Mentawai	Rp 42.784.854.485	Rp 41.948.183.104	Rp 67.862.676.598	Rp 45.358.184.274	Rp 40.203.645.066
60	Limah Puluh Kota	Rp 62.932.793.303	Rp 68.060.267.475	Rp 119.771.917.448	Rp 73.440.842.296	Rp 86.168.153.332
61	Padang Pariaman	Rp 72.995.950.834	Rp 72.859.394.000	Rp 141.310.805.691	Rp 84.502.722.191	Rp 101.607.521.617
62	Pasaman	Rp 79.684.485.786	Rp 88.862.264.200	Rp 142.748.233.335	Rp 100.067.231.369	Rp 98.595.691.294
63	Pasaman Barat	Rp 69.128.838.735	Rp 91.174.717.113	Rp 158.920.863.868	Rp 104.523.535.551	Rp 104.071.607.688
64	Pesisir Selatan	Rp 107.992.020.496	Rp 108.915.294.627	Rp 178.145.381.104	Rp 123.906.524.443	Rp 134.804.594.146
65	Sijunjung	Rp 65.008.435.921	Rp 76.833.967.628	Rp 107.915.719.073	Rp 79.055.940.215	Rp 83.906.454.917
66	Solok	Rp 55.610.732.918	Rp 58.803.477.233	Rp 113.269.815.423	Rp 68.301.516.506	Rp 74.595.911.759
67	Solok Selatan	Rp 41.207.396.926	Rp 51.138.125.857	Rp 75.505.887.737	Rp 60.545.296.360	Rp 67.842.785.844
68	Tanah Datar	Rp 112.072.726.548	Rp 118.971.143.694	Rp 172.812.022.624	Rp 115.914.187.914	Rp 129.785.828.001
69	Bukittinggi	Rp 66.027.359.716	Rp 71.303.781.736	Rp 102.375.931.333	Rp 101.936.792.226	Rp 111.896.596.611
70	Padang	Rp 370.413.732.165	Rp 391.925.662.646	Rp 548.653.179.266	Rp 487.937.882.411	Rp 546.108.570.689
71	Padang Panjang	Rp 67.035.654.311	Rp 70.357.124.066	Rp 88.837.033.625	Rp 79.752.372.829	Rp 77.323.150.456
72	Pariaman	Rp 29.897.289.136	Rp 29.680.784.158	Rp 30.881.846.112	Rp 32.213.303.036	Rp 36.665.174.233
73	Payakumbuh	Rp 100.646.557.921	Rp 87.445.115.902	Rp 116.596.479.804	Rp 94.287.442.042	Rp 104.070.234.422
74	Sawahlunto	Rp 52.268.500.528	Rp 53.388.553.982	Rp 62.459.787.921	Rp 47.227.132.335	Rp 57.170.993.865
75	Solok	Rp 36.630.731.403	Rp 42.117.207.737	Rp 41.852.774.058	Rp 40.742.809.270	Rp 41.651.875.802
76	Bengkalis	Rp 258.889.532.216	Rp 199.026.650.970	Rp 271.865.595.908	Rp 319.280.511.092	Rp 226.245.884.732
77	Indragiri Hilir	Rp 131.091.134.793	Rp 132.442.800.061	Rp 214.785.344.625	Rp 157.482.353.687	Rp 153.746.222.015
78	Indragiri Hulu	Rp 125.142.263.393	Rp 98.755.681.239	Rp 159.665.857.817	Rp 111.900.731.074	Rp 118.978.915.053
79	Kampar	Rp 221.377.671.792	Rp 162.363.324.671	Rp 316.432.572.652	Rp 229.382.839.238	Rp 262.882.861.943
80	Kepulauan Meranti	Rp 54.827.443.833	Rp 52.413.812.665	Rp 80.941.082.098	Rp 68.006.356.887	Rp 79.075.541.784
81	Kuantan Singingi	Rp 70.433.899.294	Rp 62.176.252.836	Rp 108.028.330.072	Rp 77.084.865.914	Rp 78.575.317.037
82	Pelalawan	Rp 109.085.093.813	Rp 107.077.951.961	Rp 181.808.597.389	Rp 136.697.900.751	Rp 155.693.478.613
83	Rokan Hilir	Rp 111.332.082.812	Rp 94.904.441.305	Rp 175.970.132.715	Rp 108.053.525.787	Rp 116.551.567.672
84	Siak	Rp 357.281.966.303	Rp 164.325.689.824	Rp 267.443.708.496	Rp 233.291.586.563	Rp 264.366.914.898
85	Dumai	Rp 162.535.866.590	Rp 192.760.175.686	Rp 265.472.760.818	Rp 279.654.914.442	Rp 291.620.030.784
86	Pekanbaru	Rp 492.511.317.377	Rp 482.031.164.869	Rp 697.466.656.720	Rp 592.707.161.812	Rp 710.129.196.651

87	Rokan Hulu	Rp 82.773.884.998	Rp 95.812.025.222	Rp 199.642.462.770	Rp 85.734.030.158	Rp 160.217.013.093
88	Batang Hari	Rp 68.925.708.044	Rp 73.516.765.629	Rp 87.929.338.843	Rp 98.808.531.272	Rp 91.567.449.215
89	Bungo	Rp 105.277.046.266	Rp 114.818.287.091	Rp 183.133.678.700	Rp 133.848.451.059	Rp 140.327.484.503
90	Kerinci	Rp 70.462.409.628	Rp 80.850.837.270	Rp 85.760.743.969	Rp 80.481.173.935	Rp 85.903.587.128
91	Merangin	Rp 76.949.402.914	Rp 75.158.423.417	Rp 86.702.264.469	Rp 89.304.559.028	Rp 106.160.970.250
92	Muaro Jambi	Rp 63.662.790.891	Rp 60.630.301.196	Rp 77.926.789.169	Rp 90.305.498.362	Rp 93.794.601.240
93	Sarolangun	Rp 85.372.961.961	Rp 92.425.177.747	Rp 85.185.129.614	Rp 118.828.593.872	Rp 94.621.365.981
94	Tanjung Jabung Barat	Rp 68.040.011.773	Rp 85.934.484.185	Rp 98.779.362.060	Rp 101.840.551.797	Rp 120.220.481.668
95	Tanjung Jabung Timur	Rp 38.473.606.893	Rp 43.935.743.484	Rp 76.775.700.726	Rp 49.607.102.060	Rp 53.919.302.033
96	Tebo	Rp 62.037.299.487	Rp 60.938.006.779	Rp 68.406.126.028	Rp 76.160.028.618	Rp 83.236.373.472
97	Jambi	Rp 263.925.520.119	Rp 287.525.214.004	Rp 397.327.847.289	Rp 338.891.882.592	Rp 393.429.595.383
98	Sungai Penuh	Rp 36.246.931.834	Rp 36.632.476.994	Rp 31.420.979.313	Rp 34.184.049.669	Rp 34.900.741.628
99	Banyuasin	Rp 96.219.655.177	Rp 104.218.245.467	Rp 125.984.368.888	Rp 140.602.072.490	Rp 200.616.348.310
100	Empat Lawang	Rp 27.118.381.319	Rp 22.347.811.179	Rp 68.806.714.654	Rp 32.217.492.489	Rp 41.672.141.481
101	Lahat	Rp 189.584.741.246	Rp 184.972.794.851	Rp 164.495.177.552	Rp 112.571.296.475	Rp 141.161.144.249
102	Muara Enim	Rp 178.245.088.811	Rp 150.912.522.963	Rp 226.929.233.265	Rp 232.468.708.584	Rp 303.296.321.152
103	Musi Banyuasin	Rp 181.795.444.466	Rp 169.012.416.526	Rp 209.410.035.753	Rp 210.238.037.284	Rp 286.594.847.516
104	Musi Rawas	Rp 97.998.166.925	Rp 96.743.870.855	Rp 151.594.082.635	Rp 106.289.385.326	Rp 128.563.715.133
105	Musi Rawas Utara	Rp 29.172.475.400	Rp 32.174.860.897	Rp 57.580.992.081	Rp 30.141.830.710	Rp 37.574.950.356
106	Ogan Ilir	Rp 42.843.410.496	Rp 109.762.617.128	Rp 95.711.837.736	Rp 55.362.963.113	Rp 86.150.568.158
107	Ogan Komering Ilir	Rp 110.225.039.890	Rp 108.992.378.485	Rp 222.961.997.724	Rp 235.946.143.259	Rp 195.401.652.978
108	Ogan Komering Ulu	Rp 98.756.154.905	Rp 87.578.643.416	Rp 172.013.164.446	Rp 156.622.053.791	Rp 145.563.548.513
109	Ogan Komering Ulu Selatan	Rp 38.197.172.490	Rp 35.696.934.794	Rp 89.506.598.777	Rp 42.993.134.752	Rp 57.669.139.990
110	Ogan komering Ulu Timur	Rp 64.280.630.983	Rp 69.357.438.647	Rp 77.706.784.296	Rp 85.235.157.421	Rp 99.017.727.658
111	Pali	Rp 22.025.377.405	Rp 26.350.314.142	Rp 56.934.787.816	Rp 74.392.980.925	Rp 84.794.229.883
112	Lubuk Linggau	Rp 66.725.204.496	Rp 75.797.426.519	Rp 115.521.939.796	Rp 105.606.815.787	Rp 166.689.280.993
113	Pagar Alam	Rp 53.418.726.125	Rp 51.113.017.420	Rp 65.538.892.445	Rp 73.600.344.354	Rp 60.064.187.982
114	Palembang	Rp 736.926.505.929	Rp 781.413.947.765	Rp 1.091.704.605.855	Rp 953.302.082.628	Rp 1.081.114.690.868
115	Prabumulih	Rp 72.236.033.965	Rp 86.253.193.267	Rp 119.192.660.726	Rp 90.910.521.066	Rp 100.975.564.958
116	Lampung Barat	Rp 46.434.649.521	Rp 49.078.910.604	Rp 46.789.226.369	Rp 50.471.541.308	Rp 65.267.416.664

117	Lampung Selatan	Rp 161.645.901.756	Rp 184.063.778.379	Rp 206.061.231.196	Rp 215.411.464.185	Rp 275.464.317.224
118	Lampung Tengah	Rp 116.343.189.031	Rp 137.871.550.591	Rp 147.048.201.164	Rp 165.414.825.486	Rp 193.634.175.310
119	Lampung Timur	Rp 84.496.936.514	Rp 94.924.247.670	Rp 111.886.192.444	Rp 125.035.523.317	Rp 147.527.535.828
120	Lampung Utara	Rp 93.239.503.920	Rp 98.607.164.917	Rp 103.970.703.713	Rp 102.289.605.031	Rp 102.587.471.150
121	Mesuji	Rp 18.713.301.103	Rp 27.783.046.527	Rp 22.114.018.973	Rp 33.206.360.524	Rp 45.620.663.052
122	Pesawaran	Rp 36.869.989.225	Rp 41.956.848.582	Rp 50.154.096.623	Rp 58.265.161.928	Rp 65.693.842.719
123	Pesisir Barat	Rp 11.597.895.329	Rp 20.710.860.363	Rp 42.895.150.221	Rp 23.481.041.773	Rp 29.323.369.726
124	Pringsewu	Rp 61.765.136.240	Rp 68.157.777.766	Rp 73.405.027.120	Rp 71.824.582.142	Rp 86.313.480.516
125	Tanggamus	Rp 21.979.172.078	Rp 23.712.889.208	Rp 56.177.617.871	Rp 61.714.421.073	Rp 76.050.778.580
126	Tulang Bawang	Rp 34.088.549.868	Rp 26.416.719.390	Rp 40.931.506.762	Rp 67.129.955.994	Rp 82.379.613.623
127	Tulang Bawang Barat	Rp 16.452.748.570	Rp 20.882.974.136	Rp 23.142.474.247	Rp 27.613.469.635	Rp 32.410.517.401
128	Way Kanan	Rp 47.894.065.833	Rp 44.346.945.471	Rp 49.551.283.407	Rp 56.764.985.088	Rp 62.353.560.983
129	Bandar Lampung	Rp 397.547.326.856	Rp 483.379.398.034	Rp 612.809.680.623	Rp 550.275.048.130	Rp 627.296.544.827
130	Metro	Rp 127.586.432.960	Rp 114.436.719.785	Rp 138.839.408.334	Rp 132.202.276.039	Rp 176.199.324.166

LAMPIRAN 7

TABEL DANA PERIMBANGAN KABUPATEN DAN KOTA DI PULAU SUMATRA TAHUN 2015-2019

No	Kabupaten/Kota	2015	2016	2017	2018	2019
1	Aceh Barat	Rp 673.694.900.761	Rp 752.608.323.882	Rp 768.955.867.896	Rp 781.868.536.239	Rp 814.507.507.903
2	Aceh Barat Daya	Rp 622.329.754.490	Rp 735.978.021.965	Rp 616.172.642.987	Rp 656.379.749.204	Rp 616.293.166.060
3	Aceh Besar	Rp 859.950.978.542	Rp 1.057.384.175.963	Rp 944.271.107.790	Rp 930.010.592.141	Rp 1.012.163.249.230
4	Aceh Jaya	Rp 601.861.839.640	Rp 655.719.358.282	Rp 565.133.361.976	Rp 584.376.272.078	Rp 561.610.964.978
5	Aceh Selatan	Rp 823.270.807.421	Rp 979.994.635.405	Rp 951.220.993.078	Rp 965.371.745.516	Rp 931.637.089.659
6	Aceh Singkil	Rp 616.306.455.621	Rp 649.484.006.090	Rp 589.766.359.602	Rp 576.956.207.571	Rp 582.727.132.406
7	Aceh Tamiang	Rp 724.104.955.568	Rp 863.883.794.168	Rp 772.295.722.888	Rp 781.786.995.632	Rp 794.905.901.151
8	Aceh Tengah	Rp 774.768.953.997	Rp 1.013.908.813.619	Rp 875.816.161.614	Rp 829.534.775.825	Rp 821.300.806.452
9	Aceh Tenggara	Rp 752.674.607.559	Rp 954.865.467.404	Rp 790.800.082.057	Rp 743.756.855.653	Rp 785.308.359.305
10	Aceh Timur	Rp 912.352.772.658	Rp 1.051.942.856.036	Rp 1.043.156.637.656	Rp 1.027.652.921.597	Rp 1.106.529.214.868
11	Aceh Utara	Rp 1.204.656.604.852	Rp 1.296.652.358.755	Rp 1.328.605.892.782	Rp 1.342.423.755.687	Rp 1.454.869.953.193
12	Bener Meriah	Rp 529.055.866.786	Rp 645.559.882.529	Rp 571.579.093.355	Rp 580.388.983.190	Rp 609.708.370.154
13	Bireuen	Rp 984.896.515.695	Rp 1.120.470.574.800	Rp 1.156.115.277.116	Rp 1.064.479.927.363	Rp 1.107.652.778.543
14	Gayo Lues	Rp 631.508.034.667	Rp 710.193.971.046	Rp 571.558.575.124	Rp 649.955.059.479	Rp 585.232.201.100
15	Nagan Raya	Rp 621.186.430.933	Rp 650.964.915.284	Rp 579.125.407.276	Rp 667.610.847.884	Rp 673.321.655.285
16	Pidie Jaya	Rp 599.882.500.509	Rp 677.272.843.690	Rp 593.660.765.519	Rp 610.014.885.166	Rp 610.788.391.748
17	Simeulue	Rp 504.797.934.621	Rp 612.714.265.741	Rp 604.618.275.744	Rp 588.843.953.598	Rp 596.630.613.901
18	Banda Aceh	Rp 680.301.756.050	Rp 801.801.081.470	Rp 737.750.392.419	Rp 748.380.228.413	Rp 752.795.789.176
19	Langsa	Rp 505.098.308.709	Rp 656.804.723.246	Rp 677.192.132.793	Rp 593.621.554.571	Rp 617.782.373.399
20	Lhokseumawe	Rp 610.875.498.509	Rp 688.355.157.426	Rp 644.213.912.781	Rp 586.255.868.918	Rp 607.297.641.452
21	Sabang	Rp 402.736.299.259	Rp 504.011.996.221	Rp 436.019.489.449	Rp 489.653.789.249	Rp 478.978.998.625
22	Subulussalam	Rp 454.292.012.035	Rp 548.122.264.173	Rp 494.792.042.493	Rp 432.614.060.638	Rp 459.031.906.513
23	Pidie	Rp 964.665.249.946	Rp 1.136.572.837.485	Rp 1.072.658.698.773	Rp 1.098.033.955.156	Rp 1.066.925.649.561

24	Asahan	Rp 1.014.692.929.384	Rp 1.188.340.367.058	Rp 1.137.299.069.609	Rp 1.176.621.457.467	Rp 1.198.101.351.385
25	Batu Bara	Rp 665.570.072.713	Rp 864.938.764.513	Rp 781.997.824.280	Rp 784.874.225.863	Rp 800.268.552.172
26	Dairi	Rp 630.242.780.607	Rp 643.495.769.537	Rp 629.176.730.114	Rp 630.738.669.380	Rp 643.527.342.978
27	Deli Serdang	Rp 1.565.271.496.813	Rp 1.974.004.465.463	Rp 1.987.560.013.808	Rp 1.992.298.798.336	Rp 2.000.833.953.938
28	Karo	Rp 850.087.455.305	Rp 1.040.055.892.716	Rp 959.269.973.779	Rp 941.257.217.088	Rp 977.630.358.355
29	Labuhanbatu Selatan	Rp 568.365.690.930	Rp 731.552.737.399	Rp 692.535.739.210	Rp 713.753.018.665	Rp 714.150.631.492
30	Labuhanbatu Utara	Rp 637.402.293.870	Rp 816.898.927.802	Rp 839.472.606.186	Rp 864.256.204.242	Rp 817.231.451.960
31	Langkat	Rp 1.388.565.543.763	Rp 1.732.717.434.638	Rp 1.774.515.682.680	Rp 1.722.928.314.875	Rp 1.732.852.882.496
32	Nias	Rp 525.799.031.813	Rp 731.036.152.945	Rp 599.493.520.084	Rp 608.250.693.290	Rp 621.468.917.081
33	Nias Barat	Rp 382.494.289.563	Rp 440.772.678.178	Rp 506.809.585.092	Rp 568.007.188.680	Rp 564.638.256.423
34	Nias Selatan	Rp 628.938.409.971	Rp 716.606.956.323	Rp 768.617.877.771	Rp 771.694.298.994	Rp 859.504.478.763
35	Padang Lawas	Rp 520.171.609.244	Rp 895.218.964.219	Rp 924.467.201.464	Rp 706.290.658.171	Rp 773.801.322.513
36	Padang Lawas Utara	Rp 504.651.158.603	Rp 736.693.624.975	Rp 709.333.080.176	Rp 700.703.635.068	Rp 763.032.737.308
37	Pakpak Bharat	Rp 420.108.315.709	Rp 438.748.234.369	Rp 428.721.693.525	Rp 425.088.931.780	Rp 462.549.741.238
38	Samosir	Rp 521.808.716.378	Rp 592.629.074.250	Rp 634.006.321.459	Rp 608.164.685.810	Rp 636.204.549.291
39	Serdang Bedagai	Rp 867.189.090.713	Rp 1.077.784.187.979	Rp 1.024.148.170.383	Rp 1.118.880.330.379	Rp 1.077.175.098.960
40	Simalungun	Rp 1.247.469.763.643	Rp 1.618.580.654.169	Rp 1.651.913.534.467	Rp 1.595.373.952.344	Rp 1.638.140.548.143
41	Tapanuli Selatan	Rp 807.316.680.743	Rp 1.068.059.083.000	Rp 833.027.848.924	Rp 940.110.738.096	Rp 976.668.586.417
42	Tapanuli Tengah	Rp 762.000.830.373	Rp 859.438.493.624	Rp 849.775.743.869	Rp 887.237.071.769	Rp 863.854.168.332
43	Tapanuli Utara	Rp 985.268.724.930	Rp 894.622.014.138	Rp 828.361.615.959	Rp 868.012.988.517	Rp 898.881.627.467
44	Toba Samosir	Rp 601.567.683.389	Rp 733.019.250.936	Rp 753.482.194.833	Rp 705.931.665.689	Rp 735.587.572.963
45	Binjai	Rp 604.168.845.881	Rp 747.927.480.220	Rp 689.453.570.653	Rp 714.374.160.938	Rp 748.991.939.807
46	Gunungsitoli	Rp 491.849.107.813	Rp 612.805.752.844	Rp 546.848.082.574	Rp 552.039.778.301	Rp 559.094.823.827
47	Medan	Rp 1.355.644.466.363	Rp 1.900.853.852.448	Rp 2.122.769.416.793	Rp 2.157.180.424.946	Rp 2.156.807.334.247
48	Padangsidempuan	Rp 548.495.448.236	Rp 666.941.906.384	Rp 673.189.397.118	Rp 641.431.373.569	Rp 693.704.664.371
49	Pematangsiantar	Rp 609.312.359.513	Rp 756.797.369.354	Rp 727.984.049.610	Rp 796.804.963.671	Rp 808.453.423.363
50	Tebing Tinggi	Rp 462.561.984.813	Rp 42.924.621.494	Rp 31.489.305.247	Rp 489.858.509.127	Rp 499.396.953.464
51	Humbang Hasundutan	Rp 593.461.102.765	Rp 717.140.754.486	Rp 719.933.211.876	Rp 681.797.476.833	Rp 707.685.265.766
52	Labuhan Batu	Rp 707.284.674.013	Rp 1.005.470.238.990	Rp 908.583.176.239	Rp 928.906.312.239	Rp 925.148.005.724
53	Mandailing Natal	Rp 856.846.422.230	Rp 1.055.984.803.941	Rp 1.045.563.864.478	Rp 1.064.375.456.777	Rp 1.139.343.819.991
54	Nias Utara	Rp 507.977.725.413	Rp 558.365.845.287	Rp 555.706.647.346	Rp 564.777.933.815	Rp 659.120.965.664

55	Sibolga	Rp 485.021.429.613	Rp 530.442.349.928	Rp 490.499.639.818	Rp 512.639.624.901	Rp 502.391.227.055
56	Tanjung Balai	Rp 440.409.554.663	Rp 549.811.025.919	Rp 511.282.786.918	Rp 524.827.102.453	Rp 547.449.083.975
57	Agam	Rp 889.165.309.247	Rp 1.107.755.408.357	Rp 1.078.038.915.777	Rp 1.092.066.030.986	Rp 1.143.589.671.865
58	Dharmasraya	Rp 604.520.411.648	Rp 740.796.803.359	Rp 696.906.890.931	Rp 708.972.421.763	Rp 761.630.742.880
59	Kepulauan Mentawai	Rp 692.519.176.491	Rp 820.329.757.364	Rp 731.385.235.582	Rp 776.846.474.070	Rp 818.830.711.081
60	Limah Puluh Kota	Rp 824.555.125.662	Rp 1.010.102.022.133	Rp 992.052.782.677	Rp 997.518.221.045	Rp 1.016.024.131.815
61	Padang Pariaman	Rp 865.978.893.800	Rp 1.128.367.944.854	Rp 1.059.564.099.184	Rp 1.087.008.037.363	Rp 1.139.643.299.241
62	Pasaman	Rp 650.214.817.217	Rp 771.304.699.588	Rp 767.064.865.457	Rp 755.591.287.380	Rp 785.186.900.144
63	Pasaman Barat	Rp 735.452.586.964	Rp 871.533.936.589	Rp 835.170.390.501	Rp 887.119.463.273	Rp 919.575.539.335
64	Pesisir Selatan	Rp 931.058.539.525	Rp 1.138.073.082.431	Rp 1.109.254.189.839	Rp 1.120.389.365.019	Rp 1.213.725.540.008
65	Sijunjung	Rp 618.274.198.360	Rp 725.803.701.284	Rp 710.605.073.934	Rp 700.524.757.858	Rp 737.765.488.567
66	Solok	Rp 802.966.625.338	Rp 967.169.382.111	Rp 911.897.537.818	Rp 936.193.160.458	Rp 980.735.199.266
67	Solok Selatan	Rp 569.880.541.076	Rp 620.289.938.629	Rp 641.966.526.857	Rp 636.215.119.814	Rp 695.366.633.765
68	Tanah Datar	Rp 766.634.110.847	Rp 963.487.573.519	Rp 928.980.499.474	Rp 944.906.738.207	Rp 984.486.247.225
69	Bukittinggi	Rp 449.872.722.059	Rp 547.829.867.933	Rp 516.228.868.598	Rp 523.061.869.776	Rp 552.063.924.512
70	Padang	Rp 1.169.080.233.009	Rp 1.435.966.268.657	Rp 1.360.290.810.177	Rp 1.427.929.632.546	Rp 1.524.369.871.667
71	Padang Panjang	Rp 381.194.551.009	Rp 461.720.096.046	Rp 439.519.041.267	Rp 442.112.700.653	Rp 453.085.922.598
72	Pariaman	Rp 453.544.697.798	Rp 533.629.510.758	Rp 515.176.988.201	Rp 509.927.165.546	Rp 526.506.564.742
73	Payakumbuh	Rp 508.627.289.659	Rp 601.830.078.683	Rp 596.081.338.107	Rp 565.250.189.018	Rp 609.589.230.923
74	Sawahlunto	Rp 418.033.655.447	Rp 509.630.596.269	Rp 490.823.048.329	Rp 458.504.259.105	Rp 495.141.841.033
75	Solok	Rp 415.678.886.750	Rp 508.172.245.470	Rp 472.503.110.300	Rp 481.477.263.215	Rp 508.925.258.581
76	Bengkalis	Rp 2.103.454.884.913	Rp 2.332.553.477.181	Rp 2.591.358.516.446	Rp 2.783.227.694.772	Rp 3.192.463.207.633
77	Indragiri Hilir	Rp 1.235.567.369.318	Rp 1.370.286.058.678	Rp 1.283.445.695.586	Rp 1.363.810.136.635	Rp 1.482.961.894.630
78	Indragiri Hulu	Rp 961.363.314.575	Rp 1.047.830.716.949	Rp 1.052.046.321.546	Rp 1.057.923.905.130	Rp 1.209.058.944.326
79	Kampar	Rp 1.508.466.852.315	Rp 1.571.302.634.040	Rp 1.525.027.088.899	Rp 1.676.335.496.809	Rp 1.957.011.119.683
80	Kepulauan Meranti	Rp 705.328.656.886	Rp 746.499.112.733	Rp 724.244.592.606	Rp 781.602.610.877	Rp 884.353.281.057
81	Kuantan Singingi	Rp 862.582.267.647	Rp 922.756.142.447	Rp 962.852.753.994	Rp 1.019.448.411.906	Rp 1.089.904.306.784
82	Pelalawan	Rp 969.420.964.577	Rp 1.099.078.219.705	Rp 1.076.802.235.591	Rp 1.088.778.596.712	Rp 1.219.439.285.252
83	Rokan Hilir	Rp 1.274.401.445.067	Rp 1.255.591.163.021	Rp 1.093.461.055.498	Rp 1.339.250.669.452	Rp 1.660.077.683.238
84	Siak	Rp 1.218.107.619.715	Rp 1.251.262.083.479	Rp 1.156.043.825.678	Rp 1.388.860.212.601	Rp 1.617.648.976.879
85	Dumai	Rp 587.041.598.753	Rp 689.119.140.681	Rp 755.592.886.590	Rp 810.190.491.050	Rp 856.129.356.781

86	Pekanbaru	Rp 1.085.937.598.521	Rp 1.230.454.952.529	Rp 1.222.248.651.620	Rp 1.277.237.744.503	Rp 1.304.793.092.679
87	Rokan Hulu	Rp 907.970.677.352	Rp 1.053.662.417.259	Rp 1.012.398.394.269	Rp 1.119.942.706.465	Rp 1.233.000.357.963
88	Batang Hari	Rp 686.321.089.545	Rp 892.440.394.901	Rp 928.625.426.992	Rp 888.246.032.876	Rp 963.265.456.033
89	Bungo	Rp 734.988.352.007	Rp 866.039.389.648	Rp 909.063.377.858	Rp 917.465.257.753	Rp 961.103.622.312
90	Kerinci	Rp 657.794.535.662	Rp 788.040.379.762	Rp 799.918.426.092	Rp 802.840.678.513	Rp 849.466.651.198
91	Merangin	Rp 851.727.173.069	Rp 1.038.315.600.788	Rp 979.514.011.117	Rp 978.236.523.005	Rp 1.039.700.153.727
92	Muaro Jambi	Rp 762.240.159.225	Rp 852.860.226.856	Rp 859.324.679.526	Rp 978.668.219.537	Rp 1.042.395.593.185
93	Sarolangun	Rp 698.857.421.919	Rp 802.410.845.100	Rp 768.388.109.947	Rp 848.082.192.196	Rp 972.212.674.454
94	Tanjung Jabung Barat	Rp 716.830.046.715	Rp 1.049.466.185.966	Rp 1.037.376.490.573	Rp 1.096.229.881.989	Rp 1.306.126.943.112
95	Tanjung Jabung Timur	Rp 733.466.795.933	Rp 968.373.794.264	Rp 896.259.003.727	Rp 905.488.095.447	Rp 959.088.814.692
96	Tebo	Rp 654.487.852.457	Rp 828.097.862.720	Rp 780.757.475.197	Rp 806.443.699.184	Rp 842.319.739.490
97	Jambi	Rp 858.677.840.368	Rp 1.177.857.284.208	Rp 1.013.005.895.282	Rp 1.110.714.904.091	Rp 1.110.177.033.331
98	Sungai Penuh	Rp 452.260.982.970	Rp 590.421.034.074	Rp 561.309.821.992	Rp 571.604.008.621	Rp 608.668.101.595
99	Banyuasin	Rp 1.250.448.121.908	Rp 1.515.017.782.501	Rp 1.438.187.888.419	Rp 1.449.491.766.246	Rp 1.593.797.202.363
100	Empat Lawang	Rp 554.055.946.000	Rp 638.525.188.889	Rp 681.697.460.037	Rp 745.236.496.901	Rp 708.650.914.858
101	Lahat	Rp 1.045.949.827.405	Rp 1.060.149.677.720	Rp 1.211.669.907.270	Rp 1.377.663.737.906	Rp 1.609.981.025.056
102	Muara Enim	Rp 1.530.146.920.272	Rp 1.666.514.246.481	Rp 1.749.209.635.325	Rp 1.792.510.139.858	Rp 2.155.493.438.671
103	Musi Banyuasin	Rp 1.723.626.133.366	Rp 2.327.685.024.463	Rp 2.284.442.011.973	Rp 2.399.445.440.610	Rp 3.103.333.197.302
104	Musi Rawas	Rp 1.056.225.067.314	Rp 1.324.817.679.264	Rp 1.159.387.392.934	Rp 1.330.725.122.188	Rp 1.422.659.685.092
105	Musi Rawas Utara	Rp 514.340.084.250	Rp 682.014.657.016	Rp 611.766.876.193	Rp 735.356.800.546	Rp 763.442.661.315
106	Ogan Ilir	Rp 754.139.402.977	Rp 940.136.284.368	Rp 1.011.195.133.612	Rp 1.049.790.700.966	Rp 1.162.384.119.643
107	Ogan Komering Ilir	Rp 1.255.126.807.195	Rp 1.472.007.196.948	Rp 1.493.738.924.948	Rp 1.603.716.516.140	Rp 1.610.231.422.459
108	Ogan Komering Ulu	Rp 773.046.266.128	Rp 939.928.247.711	Rp 1.031.818.532.773	Rp 1.030.583.563.489	Rp 1.116.968.931.247
109	Ogan Komering Ulu Selatan	Rp 716.609.379.257	Rp 866.483.544.547	Rp 871.408.759.446	Rp 910.648.906.804	Rp 946.979.470.007
110	Ogan komering Ulu Timur	Rp 922.913.019.434	Rp 1.183.323.558.041	Rp 1.109.643.390.143	Rp 1.170.665.910.633	Rp 1.224.659.839.616
111	Pali	Rp 516.462.085.000	Rp 655.635.308.425	Rp 801.951.800.923	Rp 1.022.376.727.650	Rp 914.755.584.675
112	Lubuk Linggau	Rp 582.390.591.350	Rp 719.715.977.118	Rp 715.153.298.144	Rp 706.155.116.266	Rp 763.615.315.295
113	Pagar Alam	Rp 520.026.891.800	Rp 611.992.695.831	Rp 680.367.025.766	Rp 636.317.733.383	Rp 640.693.974.903
114	Palembang	Rp 1.461.824.825.500	Rp 1.863.736.788.542	Rp 1.908.214.621.886	Rp 1.990.567.989.526	Rp 1.968.123.627.878
115	Prabumulih	Rp 581.085.641.600	Rp 735.605.657.838	Rp 674.043.091.251	Rp 738.071.836.484	Rp 861.847.458.222
116	Lampung Barat	Rp 639.899.114.768	Rp 826.678.258.881	Rp 773.064.817.356	Rp 854.830.511.647	Rp 791.712.917.260

117	Lampung Selatan	Rp 1.024.584.932.873	Rp 1.221.016.749.322	Rp 1.286.922.564.041	Rp 1.203.772.824.191	Rp 1.412.941.259.230
118	Lampung Tengah	Rp 1.377.672.256.118	Rp 1.825.749.300.391	Rp 1.722.465.741.922	Rp 1.808.254.062.561	Rp 1.797.258.034.498
119	Lampung Timur	Rp 1.164.854.841.356	Rp 1.555.333.164.796	Rp 1.489.412.947.931	Rp 1.494.906.155.709	Rp 1.475.128.391.944
120	Lampung Utara	Rp 989.119.165.468	Rp 1.238.244.753.562	Rp 1.246.229.672.491	Rp 1.206.059.195.860	Rp 1.244.666.930.848
121	Mesuji	Rp 532.040.690.623	Rp 619.201.138.819	Rp 625.590.670.187	Rp 615.640.647.754	Rp 632.875.492.470
122	Pesawaran	Rp 703.509.385.323	Rp 903.421.879.771	Rp 930.162.730.630	Rp 946.460.223.996	Rp 895.181.485.501
123	Pesisir Barat	Rp 435.162.743.250	Rp 594.201.363.000	Rp 596.175.229.649	Rp 573.283.931.025	Rp 587.653.782.034
124	Pringsewu	Rp 738.757.806.627	Rp 915.045.562.159	Rp 860.970.139.909	Rp 842.346.040.377	Rp 859.198.408.361
125	Tanggamus	Rp 880.574.155.270	Rp 1.136.754.251.165	Rp 1.130.001.624.786	Rp 1.323.499.952.931	Rp 1.423.855.769.136
126	Tulang Bawang	Rp 749.621.353.668	Rp 862.305.966.258	Rp 825.407.650.779	Rp 903.489.249.205	Rp 823.127.374.731
127	Tulang Bawang Barat	Rp 767.981.297.509	Rp 715.823.633.663	Rp 674.301.172.719	Rp 725.406.877.464	Rp 661.079.127.842
128	Way Kanan	Rp 780.633.656.977	Rp 908.456.210.688	Rp 1.034.484.642.816	Rp 1.023.173.721.974	Rp 990.355.064.471
129	Bandar Lampung	Rp 1.016.422.749.268	Rp 1.376.175.794.387	Rp 1.408.084.149.250	Rp 1.364.968.467.075	Rp 1.400.623.202.255
130	Metro	Rp 494.176.895.418	Rp 683.788.519.394	Rp 680.266.516.198	Rp 624.067.025.412	Rp 641.899.006.676

LAMPIRAN 8

TABEL BELANJA MODAL KABUPATEN DAN KOTA DI PULAU SUMATRA TAHUN 2015-2019

No	Kabupaten/Kota	2015	2016	2017	2018	2019
1	Aceh Barat	Rp 271.820.964.773	Rp 298.444.777.672	Rp 313.210.843.762	Rp 192.424.908.404	Rp 263.508.924.061
2	Aceh Barat Daya	Rp 255.102.255.083	Rp 377.696.754.362	Rp 235.332.275.224	Rp 172.541.445.155	Rp 270.575.998.759
3	Aceh Besar	Rp 263.655.924.336	Rp 398.717.640.742	Rp 284.528.814.315	Rp 256.173.868.996	Rp 285.173.934.327
4	Aceh Jaya	Rp 263.885.318.188	Rp 341.608.872.896	Rp 278.769.053.654	Rp 127.300.475.592	Rp 159.307.117.025
5	Aceh Selatan	Rp 337.270.191.875	Rp 362.466.116.640	Rp 389.951.814.488	Rp 229.929.481.062	Rp 265.839.014.498
6	Aceh Singkil	Rp 314.275.961.928	Rp 306.370.410.800	Rp 194.341.402.778	Rp 103.786.508.547	Rp 181.738.205.043
7	Aceh Tamiang	Rp 366.296.679.877	Rp 347.581.527.211	Rp 292.204.311.693	Rp 177.269.500.709	Rp 242.626.987.791
8	Aceh Tengah	Rp 384.854.442.208	Rp 512.060.288.509	Rp 411.264.451.094	Rp 180.831.285.122	Rp 278.734.275.752
9	Aceh Tenggara	Rp 346.875.826.581	Rp 394.681.862.052	Rp 364.232.905.006	Rp 147.844.275.220	Rp 229.640.623.657
10	Aceh Timur	Rp 332.336.613.883	Rp 375.863.215.945	Rp 412.595.321.228	Rp 140.278.407.458	Rp 390.860.852.229
11	Aceh Utara	Rp 379.276.402.398	Rp 375.094.424.678	Rp 374.745.385.004	Rp 223.274.922.406	Rp 420.688.048.416
12	Bener Meriah	Rp 237.458.856.251	Rp 279.065.275.550	Rp 245.579.059.470	Rp 164.511.557.740	Rp 189.876.743.313
13	Bireuen	Rp 300.826.524.192	Rp 303.367.904.350	Rp 410.280.091.320	Rp 160.789.859.916	Rp 295.399.475.653
14	Gayo Lues	Rp 346.114.285.476	Rp 385.702.742.429	Rp 241.994.974.893	Rp 182.929.286.128	Rp 189.666.012.328
15	Nagan Raya	Rp 399.147.688.269	Rp 332.800.183.744	Rp 336.680.572.689	Rp 186.621.969.989	Rp 293.442.563.407
16	Pidie Jaya	Rp 311.659.625.620	Rp 302.363.483.850	Rp 234.170.955.195	Rp 178.921.414.604	Rp 205.016.682.808
17	Simeulue	Rp 149.681.750.976	Rp 181.131.943.963	Rp 243.806.652.872	Rp 137.450.686.403	Rp 202.986.400.858
18	Banda Aceh	Rp 221.109.932.994	Rp 259.597.341.647	Rp 227.594.104.789	Rp 100.757.750.369	Rp 148.964.382.239
19	Langsa	Rp 174.548.981.891	Rp 294.379.982.765	Rp 333.296.714.479	Rp 115.478.103.942	Rp 198.592.250.991
20	Lhokseumawe	Rp 223.021.063.652	Rp 235.985.010.488	Rp 223.594.518.755	Rp 143.082.398.156	Rp 203.875.275.990
21	Sabang	Rp 138.624.539.925	Rp 174.460.682.618	Rp 129.331.095.258	Rp 113.657.122.720	Rp 178.521.527.380
22	Subulussalam	Rp 198.941.247.993	Rp 353.145.096.947	Rp 267.086.647.323	Rp 110.046.462.273	Rp 182.336.942.860

23	Pidie	Rp 311.431.949.540	Rp 393.092.567.637	Rp 307.261.418.844	Rp 271.087.485.994	Rp 304.246.473.051
24	Asahan	Rp 227.438.269.630	Rp 237.676.952.256	Rp 350.146.028.220	Rp 230.200.116.402	Rp 304.478.575.305
25	Batu Bara	Rp 227.967.032.209	Rp 320.423.994.640	Rp 164.420.002.646	Rp 139.977.493.680	Rp 222.600.369.777
26	Dairi	Rp 180.098.060.210	Rp 217.941.187.120	Rp 260.705.968.964	Rp 201.561.437.853	Rp 197.567.865.963
27	Deli Serdang	Rp 491.710.226.083	Rp 561.285.600.326	Rp 741.456.897.032	Rp 670.584.193.041	Rp 703.280.070.640
28	Karo	Rp 300.098.182.224	Rp 231.098.360.315	Rp 335.935.240.977	Rp 222.116.791.413	Rp 196.427.858.444
29	Labuhanbatu Selatan	Rp 262.030.817.625	Rp 294.626.135.833	Rp 273.152.742.668	Rp 219.379.315.619	Rp 220.503.868.788
30	Labuhanbatu Utara	Rp 218.138.402.421	Rp 256.257.019.320	Rp 204.563.138.008	Rp 223.037.632.088	Rp 258.116.878.081
31	Langkat	Rp 497.257.525.402	Rp 626.295.461.427	Rp 527.164.701.722	Rp 380.576.043.929	Rp 346.035.976.277
32	Nias	Rp 194.330.739.832	Rp 227.559.502.343	Rp 239.523.860.631	Rp 207.016.876.763	Rp 190.454.026.585
33	Nias Barat	Rp 186.499.821.897	Rp 156.180.257.609	Rp 199.747.992.745	Rp 247.896.475.505	Rp 180.915.741.154
34	Nias Selatan	Rp 184.978.091.040	Rp 122.786.141.236	Rp 187.946.733.163	Rp 221.305.834.645	Rp 238.978.343.319
35	Padang Lawas	Rp 226.709.432.657	Rp 218.865.038.415	Rp 221.963.650.130	Rp 204.458.003.516	Rp 241.420.449.752
36	Padang Lawas Utara	Rp 170.639.985.692	Rp 228.440.427.691	Rp 312.571.172.200	Rp 196.036.175.259	Rp 247.484.629.027
37	Pakpak Bharat	Rp 156.407.389.643	Rp 164.178.919.569	Rp 138.363.427.367	Rp 118.336.626.935	Rp 145.937.021.774
38	Samosir	Rp 181.611.818.940	Rp 235.234.249.681	Rp 224.240.859.127	Rp 186.281.849.902	Rp 164.093.834.379
39	Serdang Bedagai	Rp 198.977.836.649	Rp 291.118.162.785	Rp 238.604.911.311	Rp 349.104.338.217	Rp 313.357.351.131
40	Simalungun	Rp 185.676.905.078	Rp 210.953.244.334	Rp 293.713.450.618	Rp 405.283.313.970	Rp 381.344.591.277
41	Tapanuli Selatan	Rp 303.915.012.639	Rp 307.152.296.664	Rp 277.231.852.741	Rp 363.140.233.295	Rp 420.660.057.835
42	Tapanuli Tengah	Rp 223.714.622.144	Rp 169.402.708.868	Rp 169.521.314.403	Rp 220.747.371.092	Rp 219.450.399.720
43	Tapanuli Utara	Rp 240.549.906.381	Rp 238.928.406.088	Rp 155.844.953.910	Rp 181.662.031.464	Rp 194.947.102.075
44	Toba Samosir	Rp 154.106.801.573	Rp 181.212.965.236	Rp 199.230.031.160	Rp 152.970.216.966	Rp 135.339.350.834
45	Binjai	Rp 174.972.076.727	Rp 202.943.191.598	Rp 154.059.962.293	Rp 214.254.227.113	Rp 127.213.320.411
46	Gunungsitoli	Rp 209.493.626.276	Rp 260.138.208.349	Rp 249.617.598.852	Rp 183.521.284.315	Rp 156.757.286.042
47	Medan	Rp 916.888.037.907	Rp 936.599.131.961	Rp 997.475.991.902	Rp 753.996.886.210	Rp 992.661.245.695
48	Padangsidempuan	Rp 121.667.415.160	Rp 159.508.881.421	Rp 184.093.967.563	Rp 113.072.061.374	Rp 137.812.393.424
49	Pematangsiantar	Rp 152.228.322.901	Rp 199.557.080.000	Rp 262.835.986.784	Rp 287.958.994.695	Rp 204.959.071.624
50	Tebing Tinggi	Rp 158.487.242.001	Rp 203.355.262.407	Rp 184.156.162.478	Rp 203.340.069.233	Rp 153.577.322.072
51	Humbang Hasundutan	Rp 169.275.196.973	Rp 223.630.077.622	Rp 224.702.953.707	Rp 168.860.963.829	Rp 177.278.522.408
52	Labuhan Batu	Rp 185.515.383.315	Rp 285.089.741.793	Rp 227.921.020.653	Rp 139.178.414.287	Rp 238.729.009.917
53	Mandailing Natal	Rp 238.677.824.662	Rp 248.898.511.516	Rp 268.243.397.538	Rp 199.849.014.897	Rp 206.392.843.128

54	Nias Utara	Rp 219.043.273.818	Rp 233.739.122.399	Rp 251.675.869.175	Rp 192.092.726.869	Rp 258.215.519.657
55	Sibolga	Rp 126.724.781.839	Rp 185.382.143.912	Rp 124.824.374.936	Rp 142.467.823.362	Rp 81.569.259.159
56	Tanjung Balai	Rp 106.723.068.953	Rp 131.747.679.415	Rp 124.950.579.564	Rp 120.913.101.870	Rp 96.299.502.046
57	Agam	Rp 161.073.310.923	Rp 192.852.825.223	Rp 270.015.746.556	Rp 212.319.559.024	Rp 280.827.672.997
58	Dharmasraya	Rp 247.439.575.452	Rp 265.428.155.993	Rp 270.152.051.057	Rp 215.526.960.835	Rp 226.598.089.916
59	Kepulauan Mentawai	Rp 251.482.269.521	Rp 277.846.773.616	Rp 313.680.549.806	Rp 222.209.809.952	Rp 297.673.042.277
60	Limah Puluh Kota	Rp 174.180.411.287	Rp 252.966.502.833	Rp 233.117.426.709	Rp 232.636.608.714	Rp 262.910.621.752
61	Padang Pariaman	Rp 210.056.212.093	Rp 306.496.631.370	Rp 367.120.206.951	Rp 262.953.914.380	Rp 263.182.047.537
62	Pasaman	Rp 176.591.156.389	Rp 234.016.497.145	Rp 184.936.891.009	Rp 140.813.280.729	Rp 125.911.245.748
63	Pasaman Barat	Rp 193.334.659.071	Rp 267.700.818.987	Rp 263.065.434.073	Rp 327.268.292.281	Rp 261.167.537.747
64	Pesisir Selatan	Rp 277.118.287.015	Rp 283.986.331.635	Rp 255.009.252.343	Rp 257.286.726.595	Rp 324.875.576.584
65	Sijunjung	Rp 167.498.683.731	Rp 243.956.925.766	Rp 189.756.100.095	Rp 205.818.505.036	Rp 204.210.889.586
66	Solok	Rp 179.309.289.671	Rp 205.316.599.065	Rp 204.616.665.888	Rp 167.162.730.044	Rp 194.815.396.238
67	Solok Selatan	Rp 215.458.902.302	Rp 234.219.029.497	Rp 230.734.913.890	Rp 196.414.321.045	Rp 210.375.471.214
68	Tanah Datar	Rp 137.034.861.538	Rp 187.784.871.556	Rp 197.916.990.531	Rp 165.134.741.678	Rp 202.885.384.184
69	Bukittinggi	Rp 69.174.912.576	Rp 80.926.569.091	Rp 115.736.552.854	Rp 178.010.817.194	Rp 187.986.455.096
70	Padang	Rp 287.576.579.422	Rp 408.310.076.287	Rp 397.843.408.958	Rp 419.839.593.968	Rp 491.009.055.949
71	Padang Panjang	Rp 111.190.406.986	Rp 146.899.921.493	Rp 211.509.246.179	Rp 125.026.313.035	Rp 98.188.781.547
72	Pariaman	Rp 170.191.189.290	Rp 178.374.780.971	Rp 153.293.150.204	Rp 132.430.598.581	Rp 156.394.642.681
73	Payakumbuh	Rp 164.671.738.972	Rp 161.516.312.333	Rp 176.632.639.124	Rp 149.445.424.991	Rp 182.218.048.171
74	Sawahlunto	Rp 135.443.678.880	Rp 132.832.856.170	Rp 123.743.149.829	Rp 77.527.748.798	Rp 94.384.258.018
75	Solok	Rp 96.285.406.801	Rp 136.028.384.722	Rp 140.483.121.184	Rp 159.588.101.391	Rp 115.013.289.927
76	Bengkalis	Rp 1.815.703.950.258	Rp 765.742.945.445	Rp 982.284.446.696	Rp 903.407.348.786	Rp 1.108.175.580.895
77	Indragiri Hilir	Rp 358.399.628.402	Rp 415.379.003.204	Rp 353.139.989.072	Rp 213.660.286.725	Rp 257.568.468.821
78	Indragiri Hulu	Rp 320.878.860.838	Rp 246.977.757.399	Rp 247.686.767.181	Rp 138.092.690.423	Rp 339.388.263.703
79	Kampar	Rp 490.400.606.381	Rp 377.690.961.517	Rp 352.062.836.537	Rp 315.557.219.866	Rp 578.989.100.174
80	Kepulauan Meranti	Rp 196.504.907.989	Rp 255.389.923.066	Rp 173.835.960.831	Rp 169.802.769.847	Rp 290.696.070.450
81	Kuantan Singingi	Rp 326.735.746.648	Rp 178.016.363.176	Rp 203.273.640.916	Rp 196.801.855.382	Rp 327.963.604.578
82	Pelalawan	Rp 453.584.905.313	Rp 454.684.129.007	Rp 254.665.598.183	Rp 161.281.235.360	Rp 255.820.334.183
83	Rokan Hilir	Rp 465.846.934.162	Rp 399.644.132.462	Rp 339.735.033.996	Rp 217.557.275.316	Rp 315.944.465.620
84	Siak	Rp 906.133.668.127	Rp 252.760.590.624	Rp 216.462.854.439	Rp 179.484.354.900	Rp 371.026.006.546

85	Dumai	Rp 143.885.869.917	Rp 200.116.034.395	Rp 272.620.881.158	Rp 174.224.234.182	Rp 265.822.240.193
86	Pekanbaru	Rp 821.626.769.354	Rp 450.341.770.647	Rp 466.573.845.628	Rp 531.148.865.175	Rp 529.533.719.917
87	Rokan Hulu	Rp 279.249.015.680	Rp 252.866.981.471	Rp 330.432.257.917	Rp 353.287.341.468	Rp 400.078.364.592
88	Batang Hari	Rp 156.606.938.746	Rp 172.177.198.399	Rp 206.581.778.664	Rp 148.206.782.170	Rp 251.118.803.753
89	Bungo	Rp 172.423.482.338	Rp 110.596.439.444	Rp 156.057.609.902	Rp 203.211.813.790	Rp 234.629.991.487
90	Kerinci	Rp 177.166.546.221	Rp 198.781.596.688	Rp 218.905.091.227	Rp 191.868.186.332	Rp 293.806.785.964
91	Merangin	Rp 291.298.391.552	Rp 340.726.304.176	Rp 301.758.120.676	Rp 207.241.385.868	Rp 226.728.661.843
92	Muaro Jambi	Rp 302.531.328.269	Rp 268.531.407.849	Rp 368.236.687.926	Rp 292.728.025.309	Rp 322.194.053.216
93	Sarolangun	Rp 284.426.210.538	Rp 233.984.942.630	Rp 247.349.222.340	Rp 215.169.066.764	Rp 414.970.363.981
94	Tanjung Jabung Barat	Rp 268.727.473.625	Rp 225.111.185.555	Rp 418.013.170.912	Rp 419.657.879.438	Rp 697.230.245.559
95	Tanjung Jabung Timur	Rp 279.110.877.714	Rp 365.777.793.530	Rp 275.104.187.921	Rp 312.956.563.764	Rp 328.872.997.320
96	Tebo	Rp 245.745.363.137	Rp 233.969.731.320	Rp 233.688.059.239	Rp 258.990.826.317	Rp 269.093.691.376
97	Jambi	Rp 385.128.743.988	Rp 424.195.954.889	Rp 419.316.595.968	Rp 445.809.162.048	Rp 432.100.003.926
98	Sungai Penuh	Rp 177.939.732.342	Rp 212.004.597.663	Rp 173.331.166.027	Rp 194.643.207.113	Rp 176.535.574.208
99	Banyuasin	Rp 439.408.057.812	Rp 368.488.105.881	Rp 303.104.686.232	Rp 266.429.179.609	Rp 424.906.674.189
100	Empat Lawang	Rp 279.782.691.976	Rp 198.992.372.066	Rp 202.980.530.869	Rp 248.395.272.382	Rp 253.146.607.390
101	Lahat	Rp 471.385.151.682	Rp 184.972.794.851	Rp 341.994.209.461	Rp 309.562.329.259	Rp 396.808.861.445
102	Muara Enim	Rp 600.742.048.393	Rp 566.871.495.939	Rp 530.346.575.503	Rp 556.628.833.664	Rp 888.469.027.757
103	Musi Banyuasin	Rp 408.512.810.287	Rp 569.702.257.607	Rp 699.529.017.374	Rp 871.952.810.973	Rp 1.102.419.234.361
104	Musi Rawas	Rp 448.752.421.382	Rp 432.324.100.108	Rp 317.467.274.462	Rp 361.982.548.505	Rp 430.926.194.698
105	Musi Rawas Utara	Rp 317.372.259.744	Rp 355.012.452.385	Rp 279.488.044.078	Rp 323.942.165.957	Rp 394.412.850.373
106	Ogan Ilir	Rp 210.013.463.224	Rp 222.327.614.406	Rp 345.998.047.710	Rp 275.666.163.928	Rp 323.235.226.236
107	Ogan Komering Ilir	Rp 474.153.706.814	Rp 560.990.403.527	Rp 473.963.601.892	Rp 302.186.496.005	Rp 626.423.290.261
108	Ogan Komering Ulu	Rp 223.476.288.576	Rp 167.777.810.850	Rp 338.867.463.782	Rp 328.753.610.069	Rp 348.992.623.346
109	Ogan Komering Ulu Selatan	Rp 372.452.630.920	Rp 373.153.188.095	Rp 292.933.440.940	Rp 311.605.526.136	Rp 381.552.391.906
110	Ogan komering Ulu Timur	Rp 207.580.658.411	Rp 321.249.671.402	Rp 291.446.226.750	Rp 278.116.679.110	Rp 508.497.584.655
111	Pali	Rp 312.210.186.115	Rp 351.124.240.317	Rp 393.154.584.868	Rp 622.813.258.526	Rp 764.119.060.810
112	Lubuk Linggau	Rp 215.943.462.860	Rp 205.417.239.958	Rp 237.003.593.139	Rp 209.920.267.732	Rp 254.283.962.721
113	Pagar Alam	Rp 276.894.553.975	Rp 246.648.045.186	Rp 195.241.879.541	Rp 92.576.062.279	Rp 216.250.532.961
114	Palembang	Rp 628.995.346.844	Rp 577.697.336.830	Rp 857.095.134.848	Rp 851.367.126.024	Rp 1.115.910.029.299
115	Prabumulih	Rp 299.372.657.603	Rp 228.274.659.622	Rp 162.394.102.450	Rp 119.551.241.841	Rp 311.715.302.708

116	Lampung Barat	Rp 302.606.112.518	Rp 310.063.349.774	Rp 348.669.021.805	Rp 290.210.241.212	Rp 220.871.333.553
117	Lampung Selatan	Rp 342.441.283.391	Rp 470.122.016.306	Rp 539.655.355.207	Rp 383.352.881.955	Rp 374.849.892.710
118	Lampung Tengah	Rp 309.313.410.776	Rp 422.941.784.576	Rp 454.948.982.528	Rp 372.907.489.490	Rp 347.461.051.828
119	Lampung Timur	Rp 255.907.955.827	Rp 364.083.387.168	Rp 321.795.859.201	Rp 285.430.669.668	Rp 204.551.856.451
120	Lampung Utara	Rp 289.834.333.621	Rp 348.790.775.688	Rp 399.975.479.972	Rp 193.419.166.707	Rp 120.762.726.596
121	Mesuji	Rp 158.523.550.165	Rp 195.511.599.747	Rp 168.470.345.705	Rp 240.570.374.862	Rp 215.958.059.150
122	Pesawaran	Rp 209.321.929.159	Rp 341.675.571.751	Rp 327.545.967.014	Rp 331.941.625.554	Rp 196.558.845.875
123	Pesisir Barat	Rp 221.869.723.728	Rp 330.560.839.623	Rp 314.242.247.261	Rp 229.701.445.859	Rp 177.051.033.935
124	Pringsewu	Rp 232.350.914.555	Rp 285.908.536.409	Rp 275.362.556.865	Rp 210.461.061.231	Rp 188.979.432.216
125	Tanggamus	Rp 219.311.391.980	Rp 227.980.982.026	Rp 248.756.396.921	Rp 172.288.692.875	Rp 241.692.701.030
126	Tulang Bawang	Rp 271.690.077.125	Rp 321.621.688.871	Rp 255.811.217.544	Rp 230.920.819.353	Rp 137.579.608.309
127	Tulang Bawang Barat	Rp 290.889.388.135	Rp 384.282.631.094	Rp 296.453.517.914	Rp 381.114.574.622	Rp 269.914.779.195
128	Way Kanan	Rp 288.713.632.194	Rp 277.836.967.242	Rp 356.898.424.719	Rp 465.984.737.871	Rp 297.966.565.126
129	Bandar Lampung	Rp 245.171.296.284	Rp 199.207.452.554	Rp 489.541.674.474	Rp 425.199.203.339	Rp 310.725.158.723
130	Metro	Rp 165.437.820.059	Rp 249.046.534.437	Rp 224.898.840.669	Rp 224.461.297.229	Rp 209.524.948.200

Lampiran 9

Tabel Deskriptif

	Y	X1	X2
Mean	26.26602	25.24369	27.46103
Median	26.23000	25.19500	27.43500
Maximum	28.23000	28.24000	28.79000
Minimum	24.96000	23.17000	24.17000
Std. Dev	0.451720	0.779363	0.417962

Lampiran 10

Chow Test

Redundant Fixed Effects Tests

Equation: Untitled

Test cross-section fixed effects

Effects Test	Statistic	d.f.	Prob.
Cross-section F	4.673682	(129,518)	0.0000
Cross-section Chi-square	501.745632	129	0.0000

Lampiran 11

Hausman Test

Correlated Random Effects - Hausman Test

Equation: Untitled

Test cross-section random effects

Test Summary	Chi-Sq. Statistic	Chi-Sq. d.f.	Prob.
Cross-section random	25.105016	2	0.0000

Lampiran 12

Hasil Regresi dengan *Fixed Effect Model*

Variable	Coefficient	Std. Error	t-Statistic	Prob.
C	17.39470	1.915039	9.083210	0.0000
X1	0.068807	0.043027	1.599174	0.1104
X2	0.259799	0.069237	3.752304	0.0002

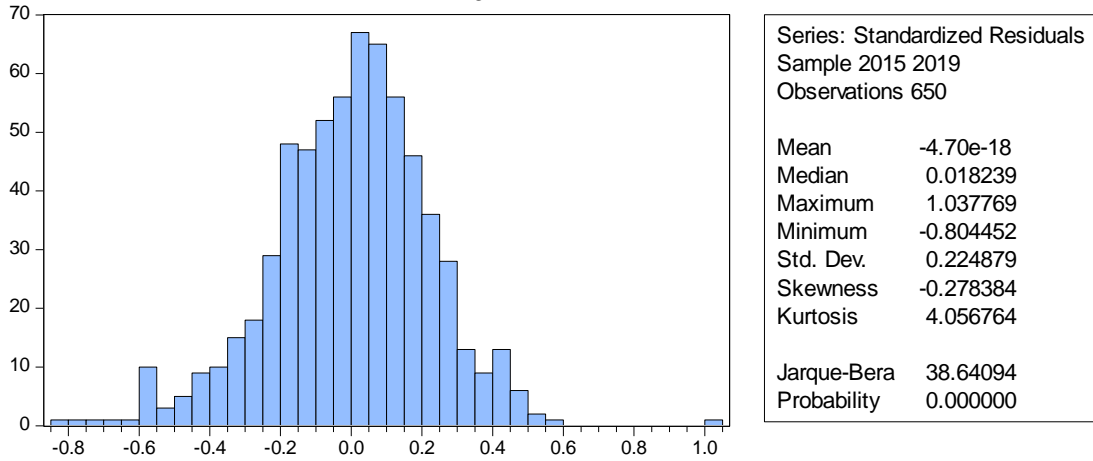
Effects Specification

Cross-section fixed (dummy variables)

R-squared	0.752168
Adjusted R-squared	0.689492
S.E. of regression	0.251713
Sum squared resid	32.82015
Log likelihood	48.11707
F-statistic	12.00095
Prob(F-statistic)	0.000000

Lampiran 13

Uji Normalitas



Lampiran 14

Uji Multikolinearitas

Variable	Coefficient Variance	Uncentered VIF	Centered VIF
C	0.747412	4425.866	NA
X1	0.000447	1687.824	1.604792
X2	0.001554	6939.817	1.604792

Lampiran 15

Uji Heteroskedasitas

F-statistic	0.935059	Prob. F(2,645)	0.3931
Obs*R-squared	1.873384	Prob. Chi-Square(2)	0.3919
Scaled explained SS	2.415899	Prob. Chi-Square(2)	0.2988

Lampiran 16

Uji Autokorelasi

F-statistic	0.978476	Prob. F(2,714)	0.3764
Obs*R-squared	1.965270	Prob. Chi-Square(2)	0.3743
