



2nd FIRST 2018

Forum in Research, Science, and Technology
*Applied Technology for Sustainable Development
in Supporting Prosperous Human Existence*

October 30-31, 2018

Horison Ultima Hotel
Palembang, Indonesia

**CONFERENCE
PROCEEDING**

ISSN: 2461-0739

Published By:
Research and Community Service Center State Polytechnic of Sriwijaya
Jl. Srijaya Negara Bukit Besar 30139 Palembang
Sumatera Selatan, Indonesia

The 2nd Forum in Research, Science, and Technology FIRST 2018 INTERNATIONAL CONFERENCE



(The 2nd FIRST 2018)

OCTOBER 30-31, 2018 — PALEMBANG, OF SOUTH SUMATERA INDONESIA

Conference Programs And Abstract from the 2nd FIRST 2018

Edited by

**Polytechnic Of Sriwijaya
Palembang Of South Sumatera Indonesia
2018**



PREFACE

The 2nd FIRST 2018 (Forum in Research, Science, and Technology) International Conference was initiated and organized by State Polytechnic of Sriwijaya in collaboration with University of Cologne, University of Sunderland, International Islamic University Malaysia, and Politeknik Seberang Perai Malaysia. The theme for the 2nd FIRST 2018 International Conference was “Applied Technology for Sustainable Development in Supporting Prosperous Human Existence”.

The 2nd FIRST 2018 International Conference facilitated the participants from all over the world to meet face to face to open chances in establishing connection and collaboration among them. It was not only for the researchers in academics, but also in industries and governments. This conference became an effective media to link the researchers from many parts of the world conference, for exchanging, sharing, following up and discussing the results of the latest researches, industries needs, and government regulatory policies.

The 2nd FIRST 2018 International Conference became worthwhile platform for researchers to present their finding in the areas on multidisciplinary of Engineering and Science (Track 1), Computer Science and ICT (Track 2), and Social Science (Track 3). It has also provided an opportunity for the professionals and researchers to learn and share about the latest development and research in those 3 tracks.

The 2nd FIRST 2018 International Conference attracted so many authors not only from Indonesia but also from other countries, such as England, German, Saudi Arabia, Malaysia, Japan, and Taiwan. There were 139 paper submitted to the conference, however, only 109 paper were accepted. There were 67 papers for Track 1 (Engineering and Science), 17 papers for Track 2 (Computer Science and ICT), and 25 papers for Track 3 (Social Science).

In the 2nd FIRST 2018 International Conference, there were 6 keynote speakers and 3 invited speakers. Although two of the 2nd FIRST 2018 International Conference speakers, i.e. Prof. Dr. Rahmat Budiarto and Dr. Mohammed Yahya Azahrani from Al Baha University, Saudi Arabia. However, it did not decrease the interest of the participants to follow all of events in the 2nd FIRST 2018 International conference.

At the end of this speech, I would like to say thank you very much for all the participants and their respected institution that have supported in succeeding the 2nd FIRST 2018 International Conference. I also would like to say thank and congratulate for the organizing committee, sponsors, and all of the guess for their dedication and tremendous effort in organizing the 2nd FIRST 2018 International Conference.

ORGANIZING COMMITTEE

International Advisory Committee

- Prof. Erry Yulian Triblas Adesta, International Islamic University, Malaysia
- Prof. Dr. Rahmat Budiarto, Al Baha University, Saudi Arabia Assoc
- Prof. Dr. Augustus E. Osseo-Asare University of Sunderland, United Kingdom
- Prof. Dr. Werner Rammense, Cologne University, Germany
- Prof. Badri Munir Sukoco, SE.,MBA.,Ph.D, Universitas Airlangga Indonesia

Steering Committee

- Prof. Muhammad Nizam, Ph.D, Universitas Sebelas Maret, Indonesia
- Prof. Dr. Mohammad Yeakub Ali, International Islamic University Malaysia Assoc.
- Prof. Ahmad Hoirul Basori, King Abdulaziz University, Saudi Arabia
- Mohammad Hossein Anisi, University of Essex, UK
- Dr. Zulhadi Zakaria, Politeknik Seberang Perai, Malaysia
- Dr. Ing. Ahmad Taqwa, M.T, Politeknik Negeri Sriwijaya, Indonesia
- Prof. Dr. Ir. Siti Nurmaini, Universitas Sriwijaya, Indonesia
- Prof. Assoc. Pindo Tutuko, Ph.D University of Merdeka, Malang, Indonesia
- Dr. Dodik Siswanto S.E., M.Sc. Acc, Universitas Indonesia
- Dr. Irwan Meilano ST,M.Sc, ITB, Indonesia
- Dr. Gancar Candra Premananto, SE., M.Si., Universitas Airlangga
- Munawar A. Riyadi, Universitas Diponegoro, Semarang, Indonesia
- Ir. Amrifan Saladin Mohruni Ph.D, Universitas Sriwijaya, Indonesia
- Dr. RD. Kusumanto, MM, Politeknik Negeri Sriwijaya, Indonesia
- Dr. H. Nandan Limakrisna, Ir., M.M., CQM, Universitas Persada Indonesia
- Irsyadi Yani, ST., M.Eng. PhD, Universitas Sriwijaya, Indonesia
- Dr. Yohandri Bow, MT, Politeknik Negeri Sriwijaya, Indonesia
- Dr. Yuli Yetri, M.Si, Politeknik Negeri Padang
- Dr. Eng. Tresna Dewi, M.Eng., Politeknik Negeri Sriwijaya, Indonesia
- Dr. Maya Fitri Oktarini S.T., M.T., Universitas Sriwijaya, Indonesia
- Ir. Indra Chandra Setiawan, M.T., PT. Toyota Motor Manufacturing, Indonesia

General Chair

Dr.Ir.Ruscianasari, M.Si, Politeknik Negeri Sriwijaya, Indonesia

General co-Chairs

- Carlos R. Sitompul, S.T.,M.T., Politeknik Negeri Sriwijaya, Indonesia
- Ir. Jaksen M. Amin, M.Si, Politeknik Negeri Sriwijaya, Indonesia
- Dr. Rita Martini, SE.,M.Si.,Ak.,CA, Politeknik Negeri Sriwijaya, Indonesia

Publication Chairs

- Deris Stiawan, M,Kom, PhD., Universitas Sriwijaya, Indonesia
- Desloehal Djumrianti, S.E., MIS., PhD, Politeknik Negeri Sriwijaya, Indonesia
- Ade Silvia Handayani, S.T., M.T, Politeknik Negeri Sriwijaya, Indonesia

Technical Program Chairs

- Muhammad Abu Bakar Sidik, S.T., M.Eng., Ph.D, Universitas Sriwijaya, Indonesia
- Reza Firsandaya Malik, S.T., M.T., Ph.D, Universitas Sriwijaya, Indonesia
- Nyayu Latifah, S.T., M.T, Politeknik Negeri Sriwijaya, Indonesia
- Dr. Herlambang Saputra, S.Pd., M.Kom., Politeknik Negeri Sriwijaya, Indonesia

Finance Chairs & Treasurer

Dr. Marieska Lupikawati, S.E., M.M, Politeknik Negeri Sriwijaya, Indonesia

Public Relation Chairs

- Ir. Irawan Rusnadi, M.T. , Politeknik Negeri Sriwijaya, Indonesia
- Drs Zakaria MPd., Politeknik Negeri Sriwijaya, Indonesia
- Dra. Tiur Simanjuntak, M.Ed.M, Politeknik Negeri Sriwijaya, Indonesia
- Sukandar S.Si.,M.T,Ph.D., Institut Teknologi Bandung, Indonesia
- Dr. GK Marriappen, Politeknik Seberang Perai, Malaysia
- Dr. Sari Lestari Zainal Ridho, SE., M.Ec, Politeknik Negeri Sriwijaya, Indonesia
- Dr. Lambok Vera R Pangaribuan, S.E., M.Si, Ak, Politeknik Negeri Sriwijaya, Indonesia
- Dr. Ir.Leila Kalsum, M.T, Politeknik Negeri Sriwijaya, Indonesia
- Dr. Martha Aznury, M.Si., Politeknik Negeri Sriwijaya, Indonesia
- Dr. Ir. Abu Hasan, M.Si., Politeknik Negeri Sriwijaya, Indonesia
- Dr. Leily Nurul Komariah, S.T., M.T., Universitas Sriwijaya, Indonesia
- Anton Satria Prabuwono, King Abdulaziz University
- Irfan Syamsuddin, Politeknik Negeri Ujung Pandang, Indonesia

- Ahmad Hoirul Basori, King Abdulaziz University, Saudi Arabia
- Ermatita, Universitas Sriwijaya, Indonesia
- Irfan Syamsuddin, Politeknik Negeri Ujung Pandang, Indonesia
- Muhammad Syafrullah, Universitas Budi Luhur, Jakarta, Indonesia
- Anton Yudhana, Universitas Ahmad Dahlan, Yogyakarta, Indonesia
- Zulfatman, Universitas Muhammadiyah Malang, Malang, Indonesia
- Mochammad Facta, Universitas Diponegoro, Semarang, Indonesia
- Imam Much Ibnu Subroto, Universitas Islam Sultan Agung, Semarang, Indonesia
- Uuf Brajawidagda, Politeknik Negeri Batam, Indonesia
- Firdaus, S.T., M.Kom., Universitas Sriwijaya, Indonesia
- Syarifah Putri Raflessia. S.Kom. M.T., Universitas Sriwijaya, Indonesia

Local Chairs

- Firdaus, S.T., M.T., Politeknik Negeri Sriwijaya, Indonesia
- Aladin SE, M.Si., Ak, CA, Politeknik Negeri Sriwijaya, Indonesia
- M. Miftahul Amin, S.Kom., M.Eng., Politeknik Negeri Sriwijaya, Indonesia
- Dr. Evada Dewata, S.E., M.Si., Ak, CA, Politeknik Negeri Sriwijaya, Indonesia
- Dr. M. Syahirman YusS.E., M.S., Politeknik Negeri Sriwijaya, Indonesia
- Dr. Ir. Aida Syarif, M.T., Politeknik Negeri Sriwijaya, Indonesia
- Dr. Neneng Miskiyah, S.E. M.Si., Politeknik Negeri Sriwijaya, Indonesia
- Dr. Periansya, M.M., Politeknik Negeri Sriwijaya, Indonesia
- Dr. Markoni Badri, S.E., MBA, Politeknik Negeri Sriwijaya, Indonesia
- Dr. Heri Setiawan, M.M., Politeknik Negeri Sriwijaya, Indonesia
- Ikhtison Mekongga, S.T., M.Kom., Politeknik Negeri Sriwijaya, Indonesia
- Yudi Wijamako, S.T., M.T., Politeknik Negeri Sriwijaya, Indonesia
- Pridson Mandiangan, S.E., M.M., Politeknik Negeri Sriwijaya, Indonesia
- Adewasti, S.T., M.Kom., Politeknik Negeri Sriwijaya, Indonesia
- Hairul, S.T., M.T., Politeknik Negeri Sriwijaya, Indonesia
- Eka Susanti, S.T., M.Kom., Politeknik Negeri Sriwijaya, Indonesia
- Leni Novianti, M.Kom., Politeknik Negeri Sriwijaya, Indonesia

☐ **NOTICE:** We are aware of an issue affecting the delivery of some of the website content to a small subset of our customers. It appears to only affect those using Avast or AVG antivirus software. We apologise if this causes any inconvenience while we work to resolve this issue.

Table of contents

Volume 1167

2019

◀ Previous issue Next issue ▶

2nd Forum in Research, Science, and Technology 30–31 October 2018, Horizon Ultima Hotel, Palembang, Indonesia

Accepted papers received: 02 January 2019

Published online: 22 March 2019

Open all abstracts

Preface

OPEN ACCESS 011001

2nd Forum in Research, Science, and Technology

+ Open abstract  View article  PDF

OPEN ACCESS 011002

Peer review statement

+ Open abstract  View article  PDF

Papers

OPEN ACCESS 012001

Optimization of Molding Parameters for a Micro Gear with Taguchi Method

Min-Wen Wang, Fatahul Arifin and Thi Truc-Ngan Huynh

+ Open abstract  View article  PDF

This site uses cookies. By continuing to use this site you agree to our use of cookies. To find out more, see our Privacy and Cookies policy.

OPEN ACCESS

012002 

Investigation of Finite Element Modelling on Thin-Walled Machining of Ti6Al4V using DEFORM-3D

A S Mohrni, M Zahir, M Yanis, S Sharif and I Yani

[+](#) Open abstract [View article](#) [PDF](#)

OPEN ACCESS

012003

Experimental Study of Low-rank Coal from South Sumatra used in Humidifier and Flash Dryer

Irwin Bizzy, Riman Sipahutar, Eddy Ibrahim and Muhammad Faizal

[+](#) Open abstract [View article](#) [PDF](#)

OPEN ACCESS

012004

Motion Control Analysis of a Spherical Robot as a Surveillance Robot

Tresna Dewi, Pola Risma, Yurni Oktarina and RD Kusumanto

[+](#) Open abstract [View article](#) [PDF](#)

OPEN ACCESS

012005

Enhancement of Navigation Systems of Mobile Robots in Gas Leakage Searching

Nyayu Latifah Husni, Nadya Lukita, Masayu Anisah, Ade Silvia Handayani, Siti Nurmaini and Irsyadi Yani

[+](#) Open abstract [View article](#) [PDF](#)

OPEN ACCESS

012006

Toward Real Time IoT Based Paste Monitoring System for Small to Medium Enterprise (SME)

Erry Y T Adesta, I Hilmy, Avicenna and D Agusman

[+](#) Open abstract [View article](#) [PDF](#)

OPEN ACCESS

012007

The Effect of Air Flow Rate and Ratio Between Coal and Coconut Shell on Heat Energy Produced in an Updraft Gasifier

Riman Sipahutar, Diah Kusuma Pratiwi, Amir Arifin and Irwin Bizzy

[+](#) Open abstract [View article](#) [PDF](#)

OPEN ACCESS

012008

Reducing CO₂ Emissions from Land Transport Sector in Indonesia: Case

Study Automobiles Sector

Indra Chandra Setiawan, Indarto and Deendarlianto

[+ Open abstract](#) [View article](#) [PDF](#)

OPEN ACCESS

012009

Criteria Analysis, weight and Priority for Handling Bridges in Kudus District using AHP and Promethee II methods

E D W Prasetyo, Mudjiastuti Handajani and Ismiyati

[+ Open abstract](#) [View article](#) [PDF](#)

OPEN ACCESS

012010

Higher Education Role in Supporting Indonesian Government Policy in Developing Renewable Energy

Ahmad Taqwa

[+ Open abstract](#) [View article](#) [PDF](#)

OPEN ACCESS

012011

Asphalt Modified Plastic Waste To Defend Damage In Asphalt Concrete (Ac-Wc)

Mahmuda, Sumiati and T Lina Flaviana

[+ Open abstract](#) [View article](#) [PDF](#)

OPEN ACCESS

012012

Tracing the City Pattern of Netherlands and Indonesia using Depth Calculation and Connectivity

Pindo Tutuko, Nurhamdoko Bonifacius, Dani Yuniawan, Adisti Safrilia, Mochamad Rizqi Junianto and Reynold Johan Aleksander Telnoni

[+ Open abstract](#) [View article](#) [PDF](#)

OPEN ACCESS

012013

Energy transfer provision based on RF-Radio Frequency as an established solution of learning process using laptops and wireless projector

S Suroso, S Sopian, H S Ade and T Ahmad

[+ Open abstract](#) [View article](#) [PDF](#)

OPEN ACCESS

012014

MIMO Printed Dipole Antenna for Wimax Network Usage Application

Suzanzefi, Irawan Hadi, Ciksadan, R A Halimah Thussyadiyah and Sholihin

[+ Open abstract](#) [View article](#) [PDF](#)

OPEN ACCESS

012015

Transmission Performance Analysis of TDMA Radio and MAC Communication of TDMA Protocol

Ferry Nando, A Permatasari, Lindawati, A S Handayani, C R Sitompul and Hani M Putri

[+ Open abstract](#) [View article](#) [PDF](#)

OPEN ACCESS

012016

Optimum Milling Parameters of Sugarcane Juice Production Using Artificial Neural Networks (ANN)

D Oktarini, A S Mohruni, S Sharif, M Yanis and Madagaskar

[+ Open abstract](#) [View article](#) [PDF](#)

OPEN ACCESS

012017

Coffee Groping Control System using tcs 3200 Sensor Based on xbee

Sarjana, Emilia Hesti and Sholihin

[+ Open abstract](#) [View article](#) [PDF](#)

OPEN ACCESS

012018

Irrigation Maintenance Priority Analysis (Case Study: Irrigation Areas in Salatiga City)

Hendarto Efendi, Sri Sangkawati, Pranoto Samto Atmodjo and Nyayu Latifah Husni

[+ Open abstract](#) [View article](#) [PDF](#)

OPEN ACCESS

012019

A Scouring Patterns Around Pillars of Sekanak River Bridge

Achmad Syarifudin and Dewi Sartika

[+ Open abstract](#) [View article](#) [PDF](#)

OPEN ACCESS

012020

Wajanbolic reflection antenna for 4g service in urban and sub urban areas

Jon Endri, Ade Silvia Handayani, Raudatul Jannah and Jefri Al-Kausar

[+ Open abstract](#) [View article](#) [PDF](#)

-
- OPEN ACCESS** 012021
IoT Technology Monitoring, Controlling and Data Logging for ATS on Grid Connected Solar-Wind Hybrid System
Budiman, Ahmad Taqwa and RD. Kusumanto
[+](#) [Open abstract](#) [View article](#) [PDF](#)
-
- OPEN ACCESS** 012022
Design of Mini Horizontal Wind Turbine for Low Wind Speed Area
Agum Try Wardhana, Ahmad Taqwa and Tresna Dewi
[+](#) [Open abstract](#) [View article](#) [PDF](#)
-
- OPEN ACCESS** 012023
A Micro Hydro Pelton Turbine Prototype (Review of the effect of water debitand nozzle angle to rotation and pelton turbine power)
Septa Eka Lesmana, Lela Kalsum and Tri Widagdo
[+](#) [Open abstract](#) [View article](#) [PDF](#)
-
- OPEN ACCESS** 012024
Optimization of Monocrystalline Solar Panels Using Reflector Scanning Technology
Fiqri Al Faruqi, RD. Kusumanto and Abu Hasan
[+](#) [Open abstract](#) [View article](#) [PDF](#)
-
- OPEN ACCESS** 012025
Performance Test of Pelton Micro-Hydro Turbine with the Variations of Parameter to Produce the Maximum Output Power
Echa Okdinata, Abu Hasan and Carlos Sitompul
[+](#) [Open abstract](#) [View article](#) [PDF](#)
-
- OPEN ACCESS** 012026
PLC Application as an Automatic Transfer Switch for on-grid PV System; Case Study Jakabaring Solar Power Plant Palembang
Achmad Kurniawan, Ahmad Taqwa and Yohandri Bow
[+](#) [Open abstract](#) [View article](#) [PDF](#)
-
- OPEN ACCESS** 012027
Automatic Cooling System for Efficiency and Output Enhancement of a PV

System Application in Palembang, Indonesia

Hadli A. Harahap, Tresna Dewi and Rusdianasari

[+](#) Open abstract [View article](#) [PDF](#)

OPEN ACCESS

012028

Sea Salt Deposition Effect on Output and Efficiency Losses of the Photovoltaic System; a case study in Palembang, Indonesia

Firdaus Setiawan, Tresna Dewi and Syahirman Yusi

[+](#) Open abstract [View article](#) [PDF](#)

OPEN ACCESS

012029

Effects of Direct Window Film Installation on Photovoltaic Solar Panel

Hendra Kusuma Negara, Rd Kusumanto and Abu Hasan

[+](#) Open abstract [View article](#) [PDF](#)

OPEN ACCESS

012030

Minimum power of solar Panel Movement in Solar Tracker System Prototype

Aldony Reco Putra, RD Kusumanto and Ahmad Taqwa

[+](#) Open abstract [View article](#) [PDF](#)

OPEN ACCESS

012031

Solar Panel Performance Improvement using Heatsink Fan as the Cooling Effect

Epsilon K A Fatoni, Ahmad Taqwa and Rd Kusumanto

[+](#) Open abstract [View article](#) [PDF](#)

OPEN ACCESS

012032

Antimicrobial Production Using Endophytic Fungus *Sporothrix sp.* LBKURCC43 by Carbon and Nitrogen Modification

A R Wali, Nursyirwani, M Verawaty and Saryono

[+](#) Open abstract [View article](#) [PDF](#)

OPEN ACCESS

012033

Converting Waste Cooking Oil into Biodiesel using Microwaves and High Voltage Technology

RA Nurul Moulita, Rusdianasari and Leila Kalsum

[+](#) [Open abstract](#) [View article](#) [PDF](#)

OPEN ACCESS

012034

Achievement Analysis of One Cylinder Diesel Engine Using Virgin Coconut Oil Biodiesel

Burhan Yuliansyah, Triwidagdo and Abuhasan

[+](#) [Open abstract](#) [View article](#) [PDF](#)

OPEN ACCESS

012035

Free Fatty Acid Reduction in a Waste Cooking Oil as a Raw Material for Biodiesel with Activated Coal Ash Adsorbent

Endang Susilowati, Abu Hasan and Aida Syarif

[+](#) [Open abstract](#) [View article](#) [PDF](#)

OPEN ACCESS

012036

CPO Based Biodiesel Production using Microwaves Assisted Method

Sandhy Yunsari, Rusdianasari and A. Husaini

[+](#) [Open abstract](#) [View article](#) [PDF](#)

OPEN ACCESS

012037

Analysis of Biodiesel Conversion on Raw Material Variation Using Statistical Process Control Method

W Andalia, I Pratiwi and S Arita

[+](#) [Open abstract](#) [View article](#) [PDF](#)

OPEN ACCESS

012038

Hydrogen Storage from the Result of Reactor ACE (Aluminum Corrosion and Electrolysis) Production by Pysisorption Method

A Zikri, Erlinawati, L Trisnaliani, A Aswan and A Firdausia

[+](#) [Open abstract](#) [View article](#) [PDF](#)

OPEN ACCESS

012039

Community Empowerment at Air Telang Protected Forest Area on Green Production of Nata de coco and Swamp Water Filtration

M Verawaty, B Lakitan and S Herlinda

[+](#) [Open abstract](#) [View article](#) [PDF](#)

-
- OPEN ACCESS** 012040
Effectiveness of Electrocoagulation Method in Processing Integrated Wastewater Using Aluminum and Stainless Steel Electrodes
Rusdianasari, Jaksen, Ahmad Taqwa and Yudi Wijarnako
[+](#) [Open abstract](#) [View article](#) [PDF](#)
-
- OPEN ACCESS** 012041
The Potency of Toxic Cyanobacteria *Planktothrix agardhii* isolated from A Retention Pond in Palembang to *Cyprinus carpio* L: A Preliminary Study
R. Wulandari, M. Amalia, R. Aryawati, SA. Hamim and M. Verawaty
[+](#) [Open abstract](#) [View article](#) [PDF](#)
-
- OPEN ACCESS** 012042
Potential of Clay in Coal Mining of Tanjung Enim Area as a Filler on Rubber Compound
A Hasan, L Kalsum, M Yerizam, R Junaidi, M Taufik, M Aznury and Fatria
[+](#) [Open abstract](#) [View article](#) [PDF](#)
-
- OPEN ACCESS** 012043
Influence the Addition of Lapindo Mud is Calcined to the Quality of Cement Podzoland by Using Electric Furnace
Robert Junaidi, Abu Hasan and Mustain Zamhari
[+](#) [Open abstract](#) [View article](#) [PDF](#)
-
- OPEN ACCESS** 012044
Impact of Coal Mining Activity on Water Quality Mining Area at South Sumatera Province
Marhaini, Legiso and Mubin
[+](#) [Open abstract](#) [View article](#) [PDF](#)
-
- OPEN ACCESS** 012045
Sodium Silicate Composite Filled by Zinc Oxide as Low Resistance Thermal Grease
Wahyu Jati Kusuma, Fadarina and Abu Hasan
[+](#) [Open abstract](#) [View article](#) [PDF](#)
-
- OPEN ACCESS** 012046

Adsorption Model in Removal of Direct Synthetic Dyes in Aqueous Solution onto Tea Waste

L Cundari, B D Afrah, D I Utami and N I Matondang

[+](#) [Open abstract](#) [View article](#) [PDF](#)

OPEN ACCESS

012047

Production of Biogas from Artificial Substrates (oil, protein, and cellulose) by Indigenous Anaerob Bacteria

Putri Agustriyani, Muhammad Said, Ade Tri, S Arifta, Muhammad Faizal and Bazlina Dawami Afrah

[+](#) [Open abstract](#) [View article](#) [PDF](#)

OPEN ACCESS

012048

Mechanical Properties of Bioplastics Product from *Musa Paradisica* *Formatypica* Concentrate with Plasticizer Variables

Sofiah, Yuniar, Martha Aznury and Melianti

[+](#) [Open abstract](#) [View article](#) [PDF](#)

OPEN ACCESS

012049

Oxygen Adsorption Kinetics Study used Pressure Swing Adsorber (PSA) for Nitrogen Production

I Purnamasari, M Yerizam, A Hasan and R Junaidi

[+](#) [Open abstract](#) [View article](#) [PDF](#)

OPEN ACCESS

012050

O-Rings Material Deterioration due to Contact with Biodiesel Blends in a Dynamic Fuel Flow

L N Komariah, S Arita, F Aprianjaya, M G Novaldi and M F Fathullah

[+](#) [Open abstract](#) [View article](#) [PDF](#)

OPEN ACCESS

012051

Lipid Extraction from Microalgae *Spirulina Platensis* for Raw Materials of Biodiesel

Leila Kalsum, Erwana Dewi, Elina Margarety and Aisyah Suci Ningsih

[+](#) [Open abstract](#) [View article](#) [PDF](#)

OPEN ACCESS

012052

Production of Glucose from Waste Bark *Acacia Mangium* Using

Delifnification and Chemical Hydrolysis Process

S Arita, F Hadiah, R Amalia, E Rosmalisa and W Andalia

[+ Open abstract](#) [View article](#) [PDF](#)

OPEN ACCESS

012053

The Effect of Reaction Time and pH on the Process of Sago Starch

Yuniar, Elina Margaretty, Fadarina, M Anerasari and Ida Febriana

[+ Open abstract](#) [View article](#) [PDF](#)

OPEN ACCESS

012054

Treatment of Leachate from Garbage using Electrocoagulation Type MP-P (MonoPolar-Paralel) Methode

Anerasari Meidinariasty, Rusdianasari, Yohandri Bow, Irawan Rusnadi and A. Lutfi Fuadi

[+ Open abstract](#) [View article](#) [PDF](#)

OPEN ACCESS

012055

Analysis of Cooler Performance in Air Supply Feed for Nitrogen Production Process Using Pressure Swing Adsorption (PSA) Method

Adi Syakdani, Yohandri Bow, Rusdianasari and Muhammad Taufik

[+ Open abstract](#) [View article](#) [PDF](#)

OPEN ACCESS

012056

Effect of Time and Concentration of Sulfuric Acid on Yield Bioethanol Produced In Making Bioethanol from Peat Soil

Kiagus Ahmad Roni, Merisha Hastarina and Netty Herawati

[+ Open abstract](#) [View article](#) [PDF](#)

OPEN ACCESS

012057

Banana midrib as substitute for pulp production

Fadarina, Mustain Zamhari, Selastia Yuliati, Ibnu Hajar and Wahyu Jati Kusuma

[+ Open abstract](#) [View article](#) [PDF](#)

OPEN ACCESS

012058

The Characteristics of Particle Board from Empty Fruit Palm Oil (*elaeis guineensis jacq*) using an Adhesive of Liquid Guava Rod Bark

Erwana Dewi, Siti Chodijah and M Elina

[+ Open abstract](#) [View article](#) [PDF](#)

-
- OPEN ACCESS** 012059
Design of Automatic Rice Seeder in Laboratory Scale
A A Sani, Iskandar, D Seprianto, R Wilza and Roby Pradiga
[+](#) [Open abstract](#) [View article](#) [PDF](#)
-
- OPEN ACCESS** 012060
Mathematics Instructional Package Based on Creative Problem Solving to Improve Adaptive Reasoning Ability and Creative Thinking Ability
Yulianto Wasiran and Andinasari
[+](#) [Open abstract](#) [View article](#) [PDF](#)
-
- OPEN ACCESS** 012061
Extraction of Pectin from Banana Peels (*Musa Paradisica Fomatypica*) for Biodegradable Plastic Films
S. Chodijah, A. Husaini, M Zaman and Hilwatulisan
[+](#) [Open abstract](#) [View article](#) [PDF](#)
-
- OPEN ACCESS** 012062
A Framework of Promoting Government Services using Social Media: Sudan E-Government Case Study
M. S. Adrees, O. E. Sheta, M. K. Omer, D. Stiawan and R. Budiarto
[+](#) [Open abstract](#) [View article](#) [PDF](#)
-
- OPEN ACCESS** 012063
Implementasion Of Calibration in Gas Hazardous Carbon Monoxide, Carbon Dioxide and Methana In Closed Room Using Fuzzy Method
Slamet Widodo, M. Miftakhul Amin and A. Bahri Joni M
[+](#) [Open abstract](#) [View article](#) [PDF](#)
-
- OPEN ACCESS** 012064
Weather Classification Based on Hybrid Cloud Image Using Principal Component Analysis (PCA) and Linear Discriminant Analysis (LDA)
Yulia Hapsari and Syamsuryadi
[+](#) [Open abstract](#) [View article](#) [PDF](#)
-
- OPEN ACCESS** 012065

Geographic Information System of Health Service Place in Palembang

Arsia Rini and Heki Aprianto

[+ Open abstract](#) [View article](#) [PDF](#)

OPEN ACCESS

012066

Blended Learning as Instructional Media: Literature Review

Nora Listiana and Adam Amril Jaharadak

[+ Open abstract](#) [View article](#) [PDF](#)

OPEN ACCESS

012067

The Implementation of Ant Colony Algorithm In Finding The Shortest Travel Route of Palembang Tourism By Android Based

Safira Faizah, Leni Novianti, S. Kom., M. Kom., Nita Novita, S. E. and M. M

[+ Open abstract](#) [View article](#) [PDF](#)

OPEN ACCESS

012068

E-tourism application in South Sumatera Province

Hetty Meileni, Sony Oktapriandi and Desi Aprianty

[+ Open abstract](#) [View article](#) [PDF](#)

OPEN ACCESS

012069

Database Design for Website Service Guide “Waterfall Tour South Sumatera”

Meidyan Permata Putri and Hendra Effendi

[+ Open abstract](#) [View article](#) [PDF](#)

OPEN ACCESS

012070

Expert System for Diseases Diagnosis in Living Things: A Narrative Review

Febria Anjara and Adam Amril Jaharadak

[+ Open abstract](#) [View article](#) [PDF](#)

OPEN ACCESS

012071

The Small and Medium Enterprise (SME) Promotion Website of Pedado Village

Rezania Agramanisti Azdy and Febriyanti Darnis

[+ Open abstract](#) [View article](#) [PDF](#)

OPEN ACCESS

012072

Application of Mapping of the Raskin Aid using AHP Fuzzy Method based on Geographic Information System

N Leni, Isnaini Azro and Robinson

[+ Open abstract](#) [View article](#) [PDF](#)

OPEN ACCESS

012073

Application Design for Lecturer Advancement in Sriwijaya State Polytechnic Palembang

Indri Ariyanti, Delta Khairunnisa, Nita Novita and M. Aris Ganiardi

[+ Open abstract](#) [View article](#) [PDF](#)

OPEN ACCESS

012074

Quality Control System (qcs) Web of Tourism Industry Sector in Palembang City

Fatmariansi and Alan Saputro

[+ Open abstract](#) [View article](#) [PDF](#)

OPEN ACCESS

012075

MEAN stack to enhance the advancement of parking application: A narrative review

Dian Nugraha and Falah Y. H. Ahmed

[+ Open abstract](#) [View article](#) [PDF](#)

JOURNAL LINKS

[Journal home](#)

[Journal Scope](#)

[Information for organizers](#)

[Information for authors](#)

[Contact us](#)

[Reprint services from Curran Associates](#)

Enhancement of Navigation Systems of Mobile Robots in Gas Leakage Searching

Nyayu Latifah Husni¹, Nadya Lukita², Masayu Anisah³, Ade Silvia Handayani⁴, Siti Nurmaini⁵, Irsyadi Yani⁶.

^{1-4,7}Electrical Department, Politeknik Negeri Sriwijaya

⁵Intelligent System Research Group, Faculty of Computer Science, Universitas Sriwijaya

⁶Mechanical Engineering Department, Faculty of Engineering, Universitas Sriwijaya

Corresponding author's e-mail address: siti_nurmaini@unsri.ac.id

Abstract. Gas leakage commonly happens in daily life. The leakage can cause many losses and even cause the death. Implementing human and animals in monitoring, checking, and finding the source of leakage can harm their life. The usage of the robot can give many advantages, i.e., it can be programmed easily, it does not feel tired, it does not need much time to be trained, etc. However, to control the robot in navigating to the leakage source is not so Haeasy. In this research, an enhancement of navigation system using two parameters inputs, i.e., distance and concentration of the gas is proposed. A distance fuzzy algorithm and gas fuzzy algorithm is implemented to the robot. The robot can use each parameter depends on the environment and situation that it meets. Both of the algorithms were successful in guiding the robot to move in the correct path. The robot could avoid the obstacles and find the location of the gas leakage.

Keyword: Mobile Robot, Navigation, Fuzzy Logic.

1. Introduction

One of the most important processes in industry is a transport system that functions to transmit oil or gases. Even though the transport system has been designed as good as possible, however, the failure risk is always possible to occur. If gas leakage happens, the distribution process will be hampered. To reduce the risks of leakage, periodic manual inspection is needed. However, it is not so easy, since the gas sometimes cannot be detected by human sense. The gas, such as CO is called as silent killer due to it has no color, no smell and no taste [1]. Therefore, a gas source detector for searching the leakage is really needed.

A gas detector in the form of mobile robot, that can move automatically or manually, has become an essential part in the industrial process [2]. The main advantage of robot application is to reduce the risks of an accident that occurred while checking the leakage. A gas detector that is brought by the operator to check the leakage around the industrial place can harm his life [3]. It is contradictive with the mobile robot that is safe to be implemented in a dangerous area. It is able to reach an area that cannot be reached by human [4].

In conducting its task, the robot navigation becomes a crucial part to be investigated. Sometimes. The robot cannot navigate well to the gas source leakage. It travels to the wrong direction. Therefore, a careful design should be built. A conventional system commonly utilizes a complex mathematical equation. It is usually difficult to be implemented in an unknown and unpredictable situation.



Therefore, the use of Artificial Intelligence (AI) will give more benefit than the conventional one. AI based on the knowledge, or usually called as knowledge base system. It works based on the knowledge that it has. It does not use a mathematical model of the system. Therefore, this system normally is easy to be designed [5].

In our previous research [6], a distance fuzzy logic was utilized. However, the robot could only be tested in the scalable arena. In this research, an AI, i.e., distance fuzzy logic was also integrated into the robot. To enhance the mobile robot ability in navigating to the real source leakage, the distance and concentration were combined and utilized as the inputs of the fuzzy logic. These inputs will be useful for the mobile robots to avoid the obstacles around it, while the concentration fuzzy logic will guide it to the correct direction. These two inputs will help the robot to decide which direction that it should take.

2. Navigation System Technology

A mobile robot must be able to navigate in the correct track in order to complete its task. It should be equipped with a good navigation system, so that, it can move well and decide where it should move in order to reach the target. The information for the navigation system is usually obtained from the environmental conditions. Various methods and techniques were implemented to navigation systems. According to Anish [7], there were two classes of navigation, namely: global and local navigation. Global related to the availability of the prior knowledge of the environment, while local related to the capability of the robot to decide what it should do based on the data of the input sensors. It could accomplish the task autonomously. Artificial Potential Field [8], [9], Modified spline-based navigation [10] are some of the examples of global navigation. For local navigation, researchers commonly used ANFIS [11], Fuzzy Logic [12], Genetic Algorithm [13], [14], Neural Network [15][10], Particle Swarm Optimization [16], Ant Colony Optimization [17], Neuro fuzzy [18], [19].

There were a lot of researches using fuzzy logic algorithms as the robot navigation system in searching the gas source [5], [14], [20]. Rivai et al in [5] used the fuzzy logic for searching the location of the gas leak. A robot arm was utilized in this research. A metal Oxide sensor was integrated into the robot. The robot has been successful in locating the gas source. However, this research only focused on the navigating of the arm of the robot, not the way of the robot moved to the gas. Kandar et al in [14] used a hybrid of fuzzy logic and PSO. The result showed that using PSO as the combination of fuzzy in searching the gas source was better than single fuzzy. However, this algorithm was implemented for more than one robot, i.e., a swarm robot that made the system became more complicated. It needed extra effort to control the robots. Ping Jiang et al in [20] used multivariable fuzzy control to manage multi inputs came from various sensor. A mathematical solution was derived to simplify the fuzzy logic rules and fuzzy inference. However, the robot was equipped with a lot of sensors that made the robot needed more cost.

3. Experimental Setup

3.1. Robot Design

In this research, 5 HC-SR04 ultrasonic sensors, 5 TGS 2600 gas sensors, and 2 L298N motor drivers were integrated into the robot. The robot movement was controlled using the fuzzy logic algorithm. The inputs of the fuzzy logic came from HC-SR04 ultrasonic sensors and TGS 2600 gas sensors, while the output was used to control the PWM of the left and the right motors. Besides ultrasonic sensors, gas sensors, and also motor drivers, the mobile robot was also equipped with Arduino Mega 2560 microcontroller that acted as the controller, Xbee pro that had functioned as wireless serial data communication, and LCD that was useful as the display monitor.

The mobile robot was designed with a diameter of 14.5 cm, as shown in Figure 1. The robot consisted of 4 levels, i.e., 1) at the first level, there were 2 motor drivers, 4 DC motors, ubec, and battery; 2) at the second level, there were Arduino Mega and 5 HC-SR04 ultrasonic sensors; 3) at the third level, there were 5 TGS 2600 sensors, Xbee, HMC5883L compass; and 4) at the top level, there

were LCD and switch button. The positions of the distance and the gas sensors, the diagram block, and the physical form are shown in Figure 1 and Figure 2.

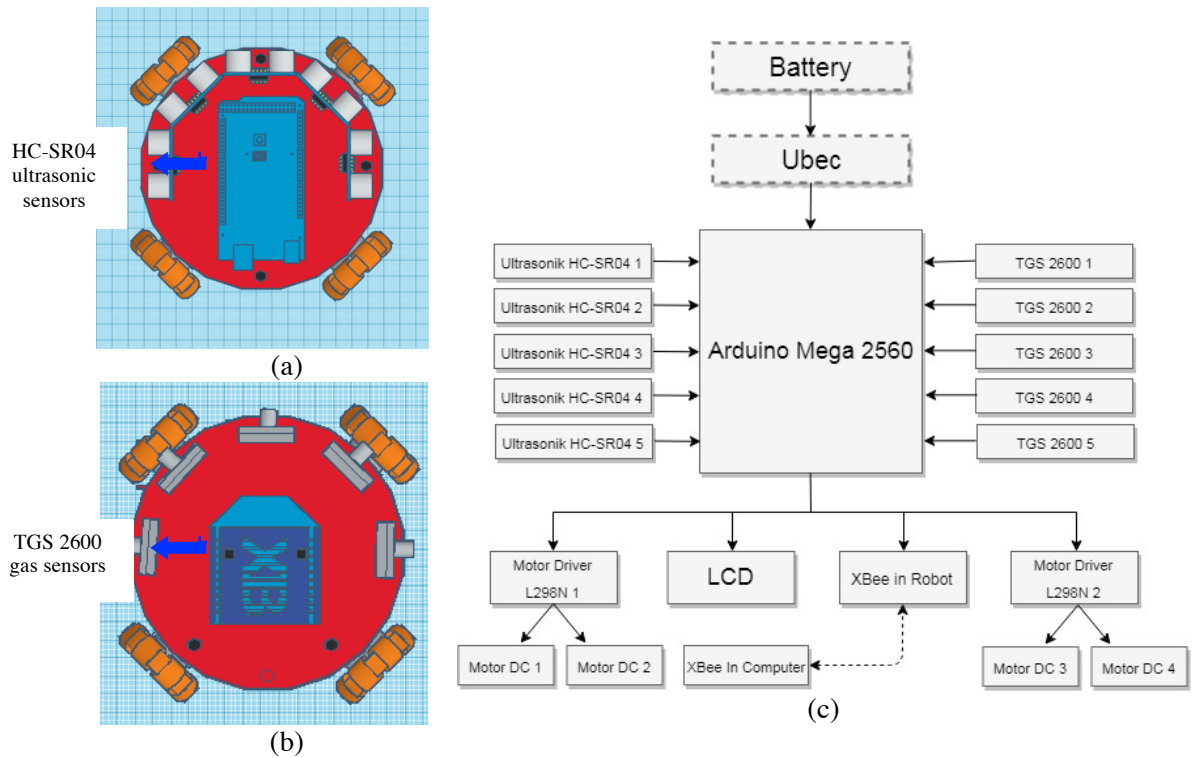


Figure 1. Mobile robots (a) positions of the ultrasonic sensors, (b) positions of the gas sensors, (c) the diagram block

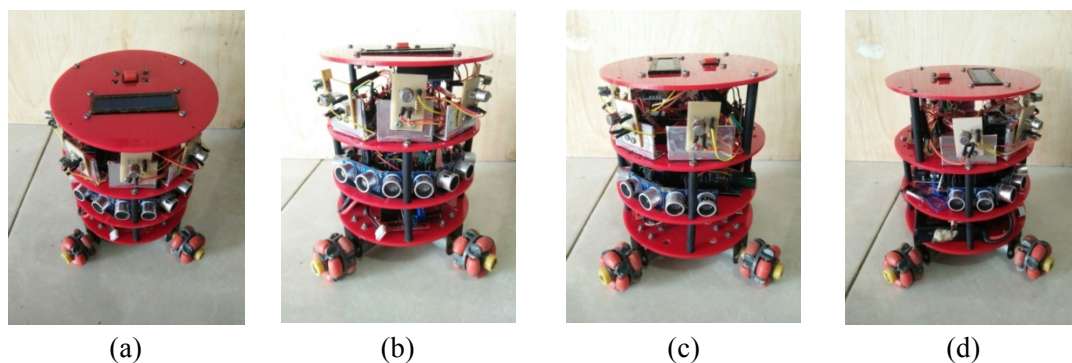


Figure 2. Physical Form of Mobile Robot from a different view: (a) top, (b) front, (c) left, (d) right.

3.2. Fuzzy Logic Algorithm as Controller

In this research, linguistic variables, namely, i) **Near, Medium, and Far** were used to indicate the distance of the robot to the experimental environment; ii) **Low, Medium, and High** were used to indicate the concentration of the gas; and ii) **Very Slow, Slow, Medium, Fast, and Very Fast** were used to indicate the duty cycles of the motors. A fuzzy rule was then designed using these linguistic variables. The basic rules were useful for the robots in deciding what it should do. The flowchart of the overall fuzzy processes was shown in Figure 3. The processes of fuzzification, fuzzy rules, and defuzzification were explained in the following section.

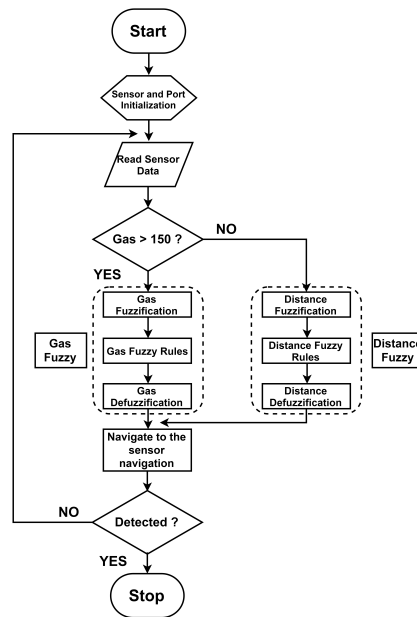


Figure 3. Flow chart of the fuzzy logic

Table 1. Input Sensor Ultrasonik HC-SR04 dan Sensor TGS 2600 Linguistic Variables

Distance Sensors			Gas Sensor		
Distance (cm)	Linguistic Variable	Symbol	Concentration (ppm)	Linguistic Variable	Symbol
10-40	Near	N	60-140	Low	L
10-70	Medium	M	60-220	Medium	M
40-70	Far	F	140-220	High	H

$$\mu_{Near}(Xi) = \begin{cases} 1 & \text{for } x < 10 \\ \frac{x-40}{10-40} & \text{for } 10 < x \leq 40 \\ 0 & \text{for } x > 40 \end{cases} \quad (1)$$

$$\mu_{Medium}(Xi) = \begin{cases} 0 & \text{for } x < 10 \text{ and } x > 70 \\ \frac{x-10}{40-10} & \text{for } 10 < x \leq 40 \\ \frac{x-70}{40-70} & \text{for } 40 < x \leq 70 \end{cases} \quad (2)$$

$$\mu_{Far}(Xi) = \begin{cases} 1 & \text{for } x > 70 \\ \frac{x-40}{70-40} & \text{for } 40 < x \leq 70 \\ 0 & \text{for } x < 40 \end{cases} \quad (3)$$

$$\mu_{Low}(Xi) = \begin{cases} 1 & \text{for } x < 60 \\ \frac{x-140}{60-140} & \text{for } 60 < x \leq 140 \\ 0 & \text{for } x > 140 \end{cases} \quad (4)$$

$$\mu_{Medium}(Xi) = \begin{cases} 0 & \text{for } x < 60 \text{ and } x > 220 \\ \frac{x-60}{140-60} & \text{for } 60 < x \leq 140 \\ \frac{x-220}{140-220} & \text{for } 140 < x \leq 220 \end{cases} \quad (5)$$

$$\mu_{High}(Xi) = \begin{cases} 1 & \text{for } x > 220 \\ \frac{x-140}{220-140} & \text{for } 140 < x \leq 220 \\ 0 & \text{for } x < 140 \end{cases} \quad (6)$$

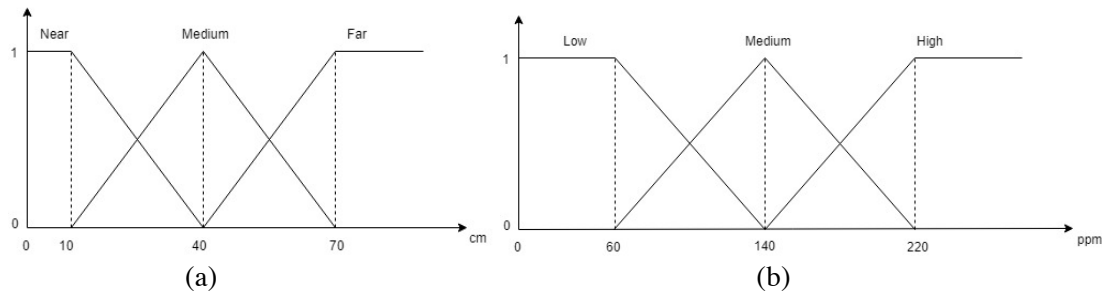


Figure 4. (a) Fuzzification of HC-SR04 Ultrasonic sensor; (b) Fuzzification of TGS 2600 gas sensor

Table 2. Output Sensor Linguistic Variable

PWM	Linguistic Variable	Symbol	note
50	Very Slow	VS	0
100	Slow	S	1
150	Medium	M	2
200	Fast	Fa	3
250	Very Fast	VFa	4

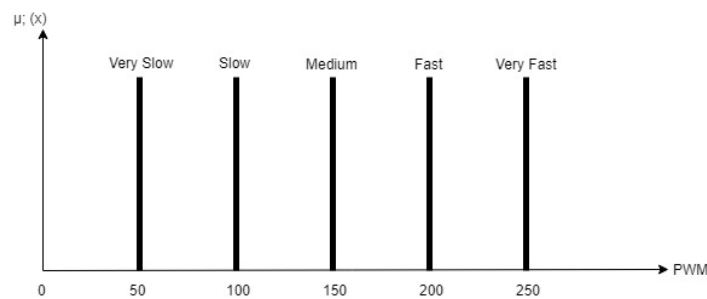


Figure 5. Output Membership Function

1st Process: Fuzzification

Fuzzification is a process of crisp input mapping from the controlled system into a fuzzy set according to its functions. The robot will figure out gas source based on 2 parameters, i.e., i) gas concentration data, namely: 60-140 (low), 60-220 (medium) and 140-220 (high); and ii) distance data, namely 10-40 (near), 10-70 (medium), and 40-70 (far). The linguistic variables for the input sensors are presented in Table 1. The defuzzification process is shown in equation (1)-(6). The membership functions of distance and gas fuzzy logic of equation (1)-(6) are shown in Figure 4. The robot could figure out the gas source based on the sensed gas concentration and the distance data. The inputs data of the fuzzy logic were used to control the PWM of the mobile robot (output). The linguistic variable for the output is shown in Table 2. The Membership function is shown in Figure 5.

2nd Process: Fuzzy Rules

The rules for the distance and fuzzy logic of this research are shown in Figure 6 and Figure 7. Each of fuzzy logic has 243 rules. The number of rules was obtained using the equation y^x , where y is the number of linguistic variable, and x is the number of the sensors used.

1. If (D1 is Near) and (D2 is Near) and (D3 is Near) and (D4 is Near) and (D5 is Near) then (LeftPWM is Slow)(RightPWM is Medium) (1)
2. If (D1 is Near) and (D2 is Near) and (D3 is Near) and (D4 is Near) and (D5 is Medium) then (LeftPWM is Medium)(RightPWM is Slow) (1)
3. If (D1 is Near) and (D2 is Near) and (D3 is Near) and (D4 is Near) and (D5 is Far) then (LeftPWM is Fast)(RightPWM is Slow) (1)
4. If (D1 is Near) and (D2 is Near) and (D3 is Near) and (D4 is Medium) and (D5 is Near) then (LeftPWM is Medium)(RightPWM is VerySlow) (1)
5. If (D1 is Near) and (D2 is Near) and (D3 is Near) and (D4 is Medium) and (D5 is Medium) then (LeftPWM is Medium)(RightPWM is Slow) (1)
6. If (D1 is Near) and (D2 is Near) and (D3 is Near) and (D4 is Medium) and (D5 is Far) then (LeftPWM is Fast)(RightPWM is Medium) (1)
7. If (D1 is Near) and (D2 is Near) and (D3 is Near) and (D4 is Far) and (D5 is Near) then (LeftPWM is Fast)(RightPWM is Slow) (1)
8. If (D1 is Near) and (D2 is Near) and (D3 is Near) and (D4 is Far) and (D5 is Medium) then (LeftPWM is Fast)(RightPWM is Medium) (1)
9. If (D1 is Near) and (D2 is Near) and (D3 is Near) and (D4 is Far) and (D5 is Far) then (LeftPWM is VeryFast)(RightPWM is VerySlow) (1)
10. If (D1 is Near) and (D2 is Near) and (D3 is Medium) and (D4 is Near) and (D5 is Near) then (LeftPWM is Medium)(RightPWM is Medium) (1)
11. If (D1 is Near) and (D2 is Near) and (D3 is Medium) and (D4 is Near) and (D5 is Medium) then (LeftPWM is Medium)(RightPWM is Medium) (1)
12. If (D1 is Near) and (D2 is Near) and (D3 is Medium) and (D4 is Near) and (D5 is Far) then (LeftPWM is Fast)(RightPWM is Medium) (1)
13. If (D1 is Near) and (D2 is Near) and (D3 is Medium) and (D4 is Medium) and (D5 is Near) then (LeftPWM is Fast)(RightPWM is Medium) (1)
14. If (D1 is Near) and (D2 is Near) and (D3 is Medium) and (D4 is Medium) and (D5 is Medium) then (LeftPWM is Fast)(RightPWM is Fast) (1)
15. If (D1 is Near) and (D2 is Near) and (D3 is Medium) and (D4 is Medium) and (D5 is Far) then (LeftPWM is VeryFast)(RightPWM is Fast) (1)

Figure 6. Fuzzy Rules Ultrasonic HC-SR04Sensor

1. If (G1 is Low) and (G2 is Low) and (G3 is Low) and (G4 is Low) and (G5 is Low) then (LeftPWM is Slow)(RightPWM is Medium) (1)
2. If (G1 is Low) and (G2 is Low) and (G3 is Low) and (G4 is Low) and (G5 is Medium) then (LeftPWM is Medium)(RightPWM is Slow) (1)
3. If (G1 is Low) and (G2 is Low) and (G3 is Low) and (G4 is Low) and (G5 is High) then (LeftPWM is CepatFast)(RightPWM is Slow) (1)
4. If (G1 is Low) and (G2 is Low) and (G3 is Low) and (G4 is Medium) and (G5 is Low) then (LeftPWM is Medium)(RightPWM is VerySlow) (1)
5. If (G1 is Low) and (G2 is Low) and (G3 is Low) and (G4 is Medium) and (G5 is Medium) then (LeftPWM is Medium)(RightPWM is Slow) (1)
6. If (G1 is Low) and (G2 is Low) and (G3 is Low) and (G4 is Medium) and (G5 is High) then (LeftPWM is CepatFast)(RightPWM is Medium) (1)
7. If (G1 is Low) and (G2 is Low) and (G3 is Low) and (G4 is High) and (G5 is Low) then (LeftPWM is CepatFast)(RightPWM is Slow) (1)
8. If (G1 is Low) and (G2 is Low) and (G3 is Low) and (G4 is High) and (G5 is Medium) then (LeftPWM is CepatFast)(RightPWM is Medium) (1)
9. If (G1 is Low) and (G2 is Low) and (G3 is Low) and (G4 is High) and (G5 is High) then (LeftPWM is VeryFast)(RightPWM is VerySlow) (1)
10. If (G1 is Low) and (G2 is Low) and (G3 is Medium) and (G4 is Low) and (G5 is Low) then (LeftPWM is Medium)(RightPWM is Medium) (1)
11. If (G1 is Low) and (G2 is Low) and (G3 is Medium) and (G4 is Low) and (G5 is Medium) then (LeftPWM is Medium)(RightPWM is Medium) (1)
12. If (G1 is Low) and (G2 is Low) and (G3 is Medium) and (G4 is Low) and (G5 is High) then (LeftPWM is CepatFast)(RightPWM is Medium) (1)
13. If (G1 is Low) and (G2 is Low) and (G3 is Medium) and (G4 is Medium) and (G5 is Low) then (LeftPWM is CepatFast)(RightPWM is Medium) (1)
14. If (G1 is Low) and (G2 is Low) and (G3 is Medium) and (G4 is Medium) and (G5 is Medium) then (LeftPWM is CepatFast)(RightPWM is Fast) (1)
15. If (G1 is Low) and (G2 is Low) and (G3 is Medium) and (G4 is Medium) and (G5 is High) then (LeftPWM is VeryFast)(RightPWM is Fast) (1)

Figure 7. Fuzzy Rules TGS 2600 Sensor

3rd Process: Defuzzification

Defuzzification step in this research used Sugeno method using AND operator by taking the minimum values of two sets. The output can be obtained using the equation (7)

$$Z = \frac{w1.\alpha1+w2.\alpha2+\dots+wn.\alpha n}{\sum \alpha} \quad (7)$$

Where Z is defuzzification, W is PWM motor, and α is Fuzzy Rules point

4. Results and Discussions

The experimental test was done using track with the distance length of ± 4 m to the gas source. The robot traversed the way and avoided the obstacle. The experimental testing situation is shown in Figure 8. Table 3 and Table 4 show the experimental data.

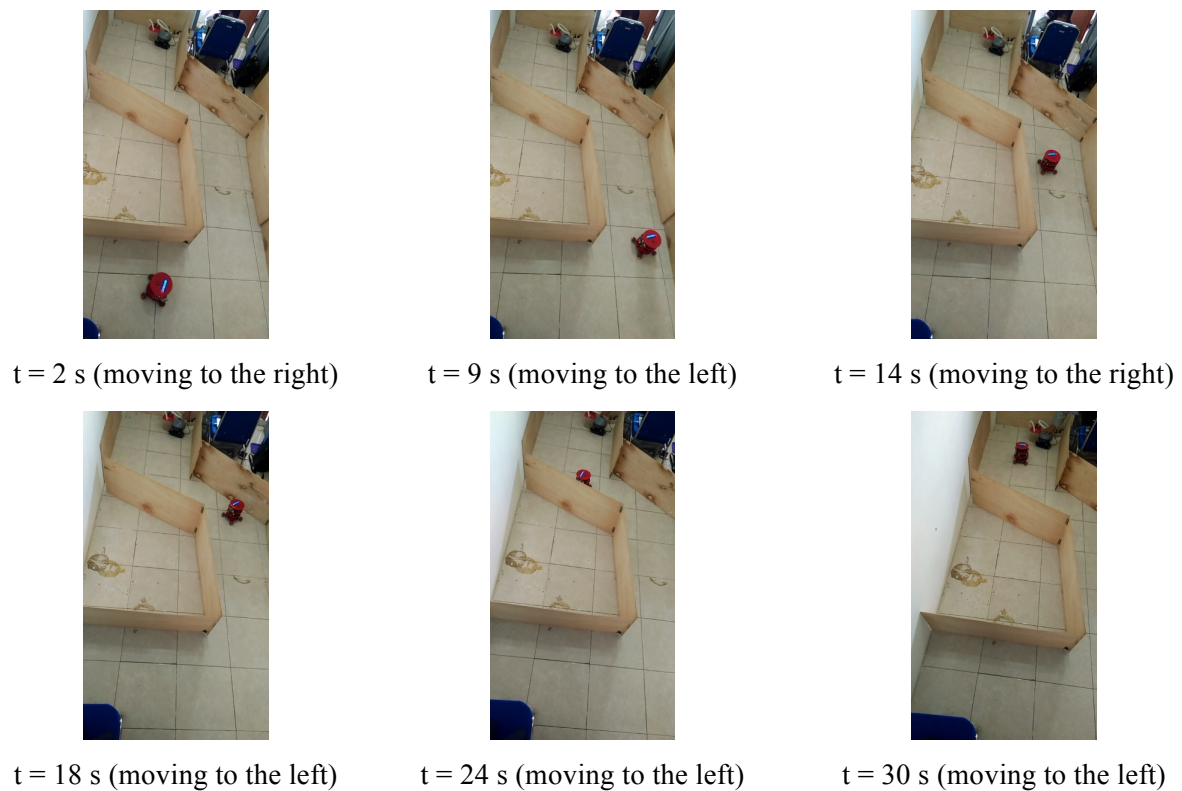


Figure 8. *Experimental Test Display*

Table 3. Experimental Result

Time (s)	Input										Output	
	Distance (cm)					Concentration (ppm)					PWM	
	D1	D2	D3	D4	D5	G1	G2	G3	G4	G5	Left	Right
2	27	126	125	26	19	86	88	141	93	96	226.63	174.46
9	17	17	57	120	57	81	82	130	87	91	137.86	245.00
14	32	96	129	20	19	78	81	127	84	88	228.13	177.50
18	30	46	95	107	26	76	79	125	83	87	198.65	232.43
24	22	144	87	39	40	75	76	120	81	84	175.00	206.25
30	36	38	41	63	37	142	152	165	128	99	194.77	235.46

Table 4. Measured and Calculated PWM output

Time (s)	Measured PWM Output		Calculated PWM Output			
	Left	Right	Distance Fuzzy Logic		Gas Fuzzy Logic	
			Left	Right	Left	Right
2	226.63	174.46	226.60	174.40	174.40	179.97
9	137.86	245.00	137.86	245.00	161.73	167.012
14	228.13	177.50	228.13	177.37	158.07	163.54
18	198.65	232.43	198.57	232.44	155.87	161.22
24	175.00	206.25	175.00	206.28	154.16	157.50
30	194.77	235.46	192.08	220.12	194.77	235.46

At the beginning of the searching ($t=2s$), the robot indicated the distance of the wall and did not detect the occurrence of the gas. Thus, it moved to the left. This moving was caused by the distance sensor that detected an obstacle, not due to the gas sensor sensed the gas. It can be proved from the calculation of the PWM in the defuzzification process, whereas the calculated PWM of the left and the right sensor were 226.60 and 174.40 respectively. This calculation was the same with the measurement data, i.e., 226.63 and 174.46 for the left and the right PWM (Table 4). This situation continued until $t=24s$, in which the robot only detected the obstacles around it. The robot movement was suitable with the output of the fuzzy logic. It used the distance sensors data to navigate. It was successful to hint the obstacles and ran smoothly to the targetted gas. This movement changed into the gas fuzzy logic when it sensed the gas concentration was higher than its determined threshold, i.e. above 150 ppm. This situation happened in $t=30s$. By analyzing the calculation data, it can be seen that the obtained calculation PWM of gas fuzzy was the same with the PWM measurement, i.e., 194.77 and 235.46. It can also be proved that when the data in Table 3 is analyzed, it can be seen that the concentration gas was more than its threshold value, namely 142, 152, 165, 128, and 99 for G1-G5 gas sensors. Therefore, the robot activated the gas fuzzy, not the distance fuzzy.

5. Conclusion

The distance and gas fuzzy logic have been successful implemented to the robot. It can switch the fuzzy algorithm based on the environmental situation. When it did not sense an enough gas concentration, it went forward and tried to search the possibility of the gas leakage location using its distance fuzzy. It changed its fuzzy algorithm activation when it sensed concentration above the determined threshold. In this situation, the gas fuzzy was activated. In its testing, the robot could accomplish its task well. It could avoid the obstacle, detect the gas, and find the gas leakage location.

6. References

- [1] D. R. Wijaya, R. Sarno, and E. Zulaika, "Gas concentration analysis of resistive gas sensor array," *2016 Int. Symp. Electron. Smart Devices, ISESD 2016*, pp. 337–342, 2017.
- [2] A. Shukla and H. Karki, "Application of robotics in onshore oil and gas industry-A review Part i," *Rob. Auton. Syst.*, vol. 75, pp. 490–507, 2016.
- [3] N. L. Husni, A. Silvia, S. Nurmaini, and I. Yani, "Odor Localization Sub Tasks : A Survey," vol. 8, no. 3, 1843.
- [4] T. Lochmatter, "Bio-Inspired and Probabilistic Algorithms for Distributed Odor Source Localization using Mobile Robots," vol. 4628, 2010.
- [5] M. Rivai, Rendyansyah, and D. Purwanto, "Implementation of fuzzy logic control in robot arm for searching location of gas leak," *2015 Int. Semin. Intell. Technol. Its Appl.*, pp. 69–74, 2015.
- [6] N. L. Husni and A. S. Handayani, "Odor Localizat on using Gas Sensor for Mobile Robot."
- [7] A. Pandey, "Mobile Robot Navigation and Obstacle Avoidance Techniques: A Review," *Int. Robot. Autom. J.*, vol. 2, no. 3, pp. 1–12, 2017.
- [8] W. Li, C. Yang, Y. Jiang, X. Liu, and C. Su, "Motion Planning for Omnidirectional Wheeled Mobile Robot by Potential Field Method," vol. 2017, 2017.
- [9] F. Bounini, D. Gingras, H. Pollart, and D. Gruyer, "Modified artificial potential field method for online path planning applications," *2017 IEEE Intell. Veh. Symp.*, pp. 180–185, 2017.
- [10] R. Lavrenov, F. Matsuno, and E. Magid, "Modified spline-based navigation: Guaranteed safety for obstacle avoidance," *Lect. Notes Comput. Sci. (including Subser. Lect. Notes Artif. Intell. Lect. Notes Bioinformatics)*, vol. 10459 LNAI, pp. 123–133, 2017.
- [11] A. Pandey, S. Kumar, K. Kant, and D. R. Parhi, "Mobile robot navigation in unknown static environments using ANFIS controller &," *Perspect. Sci.*, vol. 8, pp. 421–423, 2016.
- [12] N. H. Singh, "Mobile Robot Navigation using Fuzzy Logic in Static Environments," *Procedia Comput. Sci.*, no. 125, pp. 11–17, 2018.
- [13] S. N. Aual, M. F. Ibrahim, N. Ibrahim, A. Hussain, M. M. Mustafa, A. B. Huddin, and F. H. Hashim, "Ga-based optimisation of a lidar feedback autonomous mobile robot navigation

system,” *Bull. Electr. Eng. Informatics*, vol. 7, no. 3, pp. 433–441, 2018.

- [14] K. J. Miraswan, “Particle Swarm Optimization and Fuzzy Logic Control in Gas Leakage Detector Mobile Robot,” pp. 150–155, 2015.
- [15] L. Ran, Y. Zhang, Q. Zhang, and T. Yang, “Convolutional neural network-based robot navigation using uncalibrated spherical images,” *Sensors (Switzerland)*, vol. 17, no. 6, pp. 1–18, 2017.
- [16] P. Bartashevich, D. Koerte, and S. Mostaghim, “Energy-saving decision making for aerial swarms: PSO-based navigation in vector fields,” *2017 IEEE Symp. Ser. Comput. Intell. SSCI 2017 - Proc.*, vol. 2018–January, pp. 1–8, 2018.
- [17] V. Ganapathy, P. Sudhakara, T. T. Jia Jie, and S. Parasuraman, “Mobile Robot Navigation using Amended Ant Colony Optimization Algorithm,” *Indian J. Sci. Technol.*, vol. 9, no. 45, 2016.
- [18] A. M. Rao, K. Ramji, B. S. K. Sundara Siva Rao, V. Vasu, and C. Puneeth, “Navigation of non-holonomic mobile robot using neuro-fuzzy logic with integrated safe boundary algorithm,” *Int. J. Autom. Comput.*, vol. 14, no. 3, pp. 285–294, 2017.
- [19] P. K. Mohanty and D. R. Parhi, “A New Intelligent Motion Planning for Mobile Robot Navigation using Multiple Adaptive Neuro-Fuzzy Inference System,” *Appl. Math. Inf. Sci.*, vol. 8, no. 5, pp. 2527–2535, 2014.
- [20] and A. G. Ping Jiang, Yuzhen Wang, “Multi-variable Fuzzy Control Based Mobile Robot Odor Source Localization Via Semi- Multi-variable Fuzzy Control Based Mobile Robot Odor Source Localization Via Semi-tensor Product,” *Hindawi Publ. Corp. Math. Probl. Eng. Vol. 2015, Artic. ID 736720, 10 pages <http://dx.doi.org/10.1155/2015/736720>*, vol. 2015, 2015.



2nd FIRST 2018 INTERNATIONAL CONFERENCE
FORUM IN RESEARCH, SCIENCE, AND TECHNOLOGY (FIRST)
October, 30 - 31, 2018

CERTIFICATE OF APPRECIATION

present to

NYAYU LATIFAH HUSNI

in recognition & appreciation of the contribution as

AUTHOR

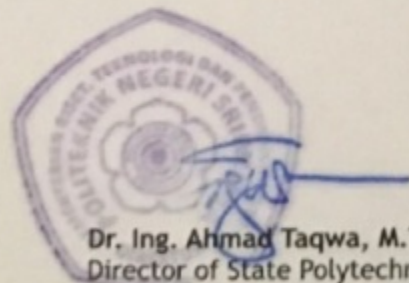
International Conference FIRST 2018

Applied Technology For Sustainable Development In Supporting Prosperous Human Existence

Held On October 30-31, 2018

HORISON ULTIMA HOTEL

Palembang, Indonesia



Dr. Ing. Ahmad Taqwa, M.T.
Director of State Polytechnic of Sriwijaya



Dr. Ir. Rusdianasari, M.Si.
Chair of 2nd FIRST 2018

Organized:



Collaborate with:



الجامعة الإسلامية العالمية ماليزيا
INTERNATIONAL ISLAMIC UNIVERSITY MALAYSIA
بوترا برني، ملايا



University of Cologne



University of
Sunderland