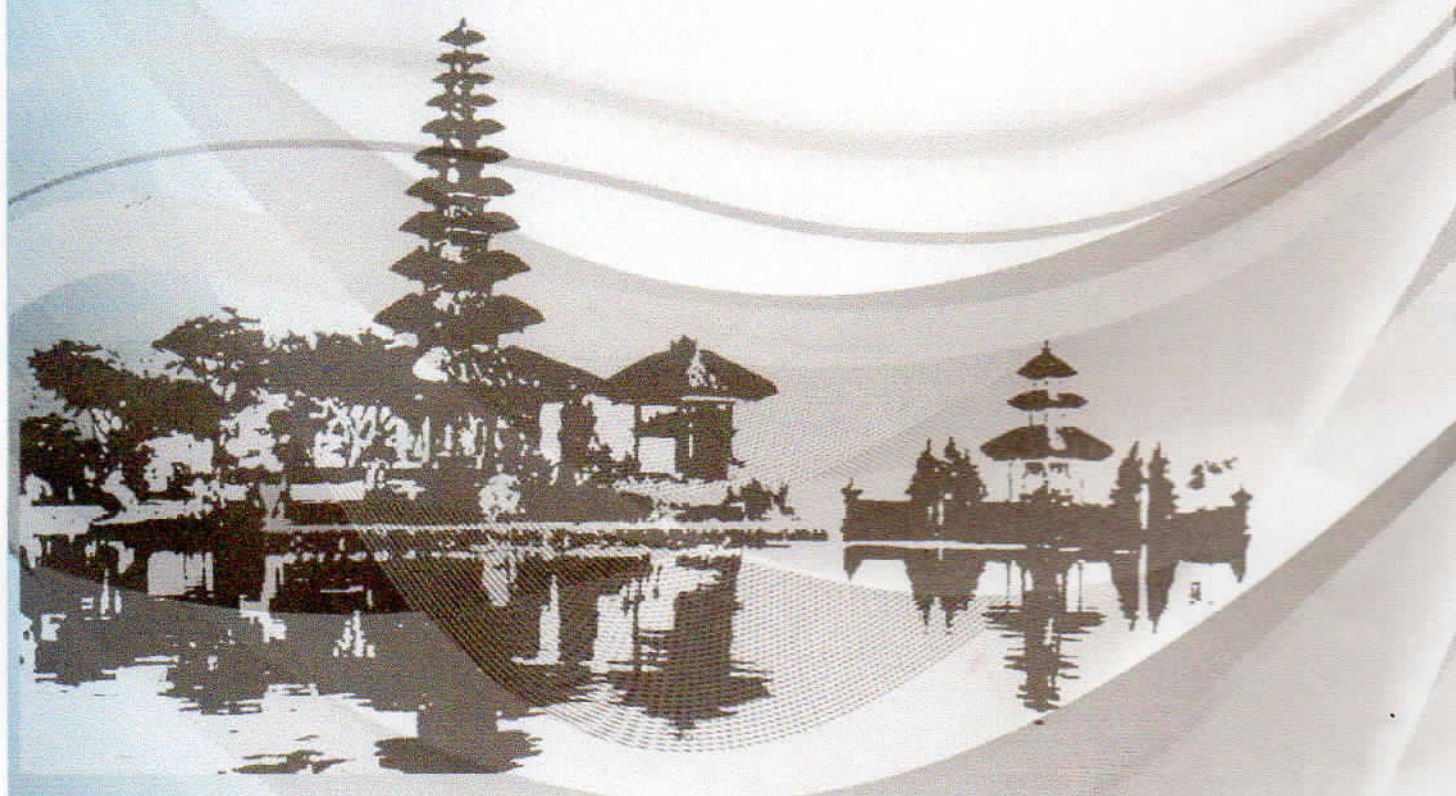




Proceeding Book

Workshop and Training on “Indonesia National Tracer Study Network” INDOTRACE 2015 27-28 November 2015, Bali-Indonesia





Proceeding Book

Workshop and Training on “Indonesia National Tracer Study Network”

INDOTRACE 2015

27-28 November 2015, Bali-Indonesia

**Proceeding Book Workshop and Training on “Indonesia National Tracer Study
Network” INDOTRACE 2015**

Contributor :

Conference’ Delegates

ISSN : 2527-984X

Editor :

Dr. drg. Sandra Fikawati, MPH.

Ir. Ahmad Syafiq, M.Sc., Ph.D.

Dr. Ied Veda Sitepu, S.S., M.A.

Dr. Ruddy J Suhatri. S.Kom, M.Sc.

Agus Hidayatulloh, S.Gz

Cover and Layout Designer :

Suci Rahmadi Surya

Career Development Center Universitas Indonesia

Gedung CDC-UI (Kompleks PUSGIWA UI)

Kampus UI Depok - 16424 - Indonesia

Telephone/Fax +622178881021

Email cdc-ui@ui.ac.id

<http://cdc.ui.ac.id>



DAFTAR ISI

Daftar Isi	iii
Metode Tracer Studi Pada Universitas Muria Kudus 2015, Muhammad Arifin	1
Masa Transisi Alumni Menuju Dunia Kerja (Analisis <i>Tracer study</i> Alumni 14 Universitas Muhammadiyah Lulusan Tahun 2013), Boby Muslimin	
Analisis dan Relevansi <i>Tracer study</i> Universitas Prof.Dr.Hazairin,SH Bengkulu, Elviza Diana	30
<i>Tracer study</i> Alumni Tahun 2013 Universitas Muhammadiyah Kendari, Ary Tamtama	43
Implementasi <i>Tracer study</i> Pada Universitas Dian Nuswantoro, Kusni Ingsih	62
Implementasi Program <i>Tracer Study</i> Universitas Islam Malang, Dyah Werdiningsih	73
Strategi Pengembangan <i>Tracer study</i> Universitas Budi Luhur Tahun 2015, Purwanto	94
Pengembangan dan Implementasi <i>Tracer Study</i> Universitas Surabaya 2015, Lisyan Tamara	113
Program Pengembangan Pusat Karir dan <i>Tracer study</i> Universitas Mercu Buana 2015, Primi Artiningrum	122
Peningkatan Kompetensi Lulusan Berbasis Hasil <i>Tracer study</i> , Diana Zuhroh	138
Implementasi <i>Tracer study</i> di Politeknik AKA Bogor, Nunung Widiyanti	154
Pemetaan Profil Kompetensi Dan Daya Saing Lulusan Universitas Nasional dengan Metode <i>Tracer Study</i> , Ucuk Darusalam	169
Mengoptimalkan Fungsi <i>Tracer Study</i> Sebagai Salah Satu Acuan Penting Pengembangan Kurikulum Berbasis KKNI, Istiqlaliah Nurul Hidayati	188

Implementasi <i>Tracer study</i> Universitas Sebelas Maret, Kusnandar	202
<i>Tracer Study</i> Universitas Sriwijaya Tahun 2015, Nuni Gofar	219
Implementasi <i>Tracer Study</i> Sebagai Upaya Peningkatan Mutu dan Kompetensi Lulusan, Elvi Rusmiyanto PW	236
Implementasi <i>Tracer study</i> Institut Teknologi Nasional Malang 2015, Sumanto	250
Identifikasi Keberadaan Alumni Politeknik Negeri Jakarta Angkatan Tahun 2013, Sidiq Wacono	260
A Web-Based <i>Tracer Study</i> 2015 As Improvement of Alumni Quality of STKIP PGRI Sumatera Barat, Zulfitri Aima	278
Pelacakan Alumni oleh Pusat Karir Universitas Widyatama Tahun 2015, Pipin Sukandi	292

PROGRAM BOOK

The 2nd International Conference
"Experiences with Link and Match in
Higher and Vocational Education.
Results of Tracer Studies Worldwide"
(EXLIMA)



Workshop and Training on
"Indonesia National Tracer Study Network"
(INDOTRACE)

SANUR PARADISE PLAZA HOTEL
24 - 28 NOVEMBER 2015,
BALI, INDONESIA



**The 2nd International Conference
"Experiences with Link and Match in
Higher and Vocational Education.
Results of Tracer Studies Worldwide"
(EXLIMA) &
Workshop and Training on
"Indonesia National Tracer Study Network"
(INDOTRACE)**



Remarks by Rector University of Indonesia

Kata Sambutan Rektor Universitas Indonesia



Prof. Dr. Ir. Muhammad Anis, M. Met.



UNIVERSITAS
INDONESIA

Veritas, Probitas, Justitia
— EST. 1849 —

Remarks by Rector University of Indonesia

Assalammua'alaikum Warahmatullahiwabarakatu

Welcome to Sanur in the beautiful island of Bali, Indonesia. I would like to extend a warm welcome to everyone here who has travelled from many places.

We gather here today to attend the Second International Conference on EXLIMA organized by the Career Development Centre Universitas Indonesia in co-operation with the Ministry of Research, Technology and Higher Education Republic of Indonesia. We are pleased to have participants from around the world including Africa, Asia and Europe.

This conference is intended to explore the relation between what we do in the world of higher education and what happens afterwards in the field of work. It is a major issue of higher education policy and practice, when the higher education is expected to prepare graduate equipped with knowledge and skill which are needed in the work market.

There is a widely believed that the higher education will result the better life. Statistics bear this out. In the USA, for instance, the higher education has resulted in the lower rate of unemployment and the higher median of weekly wage.

Nowadays workforce is better qualified. The remaining question however, are we properly matching education programs with the needs of individuals and society? To answer the question we need to engage in research. Research to explore what happen to our graduates after they leave the university.

Universitas Indonesia, and in particular our Career Development Center under the Directorate of Career Development and Alumni Relations, has undertaken pioneer work on this area under the label 'Tracer Study'. The studies done by our staff at UI have provided many insights that are extremely useful in university management. For example, at UI, we now know that the average time of waiting for a job is about two months, down from about three months a few years ago. Employers actively seek our graduates. We put this down to two things. First, we have been revising our curriculum to be more competency-based curriculum. Second, we have developed and put in place a compulsory soft skills program for undergraduates. Our tracer studies have told us any necessary things that need to be improved continuously.

Remarks by Rector University of Indonesia

Kata Sambutan Rektor Universitas Indonesia

The UI tracer study has been taken as a model by the Ministry of Education and Culture (now Ministry of Research, Technology and Higher Education) and by other universities in Indonesia. As the role model, we have been sharing what we do. With the internationalization of tracer studies, we are grateful to also be able to share our ideas and experiences with world-class experts.

I believe that this event is extremely important and exciting that will cover a detailed series of interesting issues. It suggests a growing maturity in this discipline. I am convinced that by having global cooperation in this area, we then will establish a solid collaboration between government, higher education and the private sector. This is a chance for things to be a two-way direction, with information flow benefitting both universities and employers. If you bring the government in, that would be even better.

Lastly, I would like to express my appreciation to the organizers, presenters and participants. Without all of you this conference would not be a successful one.

Have a great Conference!

Contents

daftar isi

V | Content

VI | Schedule of International Conference on EXLIMA & INDOTRACE

1 | Abstracts Speaker EXLIMA

32 | Abstracts Poster EXLIMA – INDOTRACE

36 | Abstracts Speaker INDOTRACE

113 | Conference Guide Line to Chair, Speaker, Poster Presenter, and Participant

116 | Conference Information

117 | Conference Plan Floor

118 | Information about Bali

123 | Organizing Committee & Supporting Organizations

124 | Important Contacts in Bali



Additional Meetings and Workshops

The EXLIMA conference will be accompanied by a workshop of the Indonesian Tracer Study Network (INDOTRACE) to foster the further development of Tracer Studies in Indonesia.

Friday, 27 November 2015

08.00 – 09.00	Registration and poster placement (Pre-Function Room, 2nd floor)
Session A	Opening and overview
09.00 – 12.30	Moderators Emriati Samosir, Ied Veda Sitepu, Ahmad Syafiq Denpasar room, 3rd floor
09:00-09:30	Opening: Director, Directorate for Student Affair, Ministry of Research and Higher Education, Republic of Indonesia (RI); Didin Wahidin, Indonesia
09:30-10:30	Development of higher educational institution career center and tracer study in Indonesia; Sandra Fikawati, University of Indonesia
10:00-12:30	Quality criteria of graduate tracer studies - a proposal for self-assessments; Harald Schomburg, Germany
12.30 – 14.00	Lunch and friday prayer break; Denpasar Room, 3rd floor
Session B	PKTS Grants Implementation Results Presentations (Plenary Session)
14:00-15:15	Chair: Ied Veda Sitepu Denpasar room, 3rd floor
14.00 – 15.15	Ministry of Research and Higher Education: Tracer Study Implementation Presentations 1. Univ. Kristen Duta Wacana Yogyakarta, 2. Univ. Muria Kudus, 3. Univ. Muhammadiyah Palembang, 4. Univ. Cenderawasih Jayapura Papua
15.15 – 15.30	Coffee and Tea Break / Poster Presentation (Denpasar Room, 3rd floor)
Session C	PKTS Grants Implementation Results Presentations (parallel session)
15.30-16.30	
Session C1	Chair: Ied Veda Sitepu Tabanan Room, 4th floor
15.30 – 15.50	Universitas Jember
15.50 – 16.10	Universitas Katolik Widya Mandala Surabaya
16.10 – 16.30	Universitas Muhammadiyah Kendari
Session C2	Chair: Ruddy JS Amlapura Room, 4th floor
15.30 – 15.50	Universitas Airlangga
15.50 – 16.10	Universitas Dian Nuswantoro
16.10 – 16.30	Universitas Islam Malang
Session C3	Chair: Ahmad Syafiq Bangli Room, 4 th floor
15.30 – 15.50	Universitas Budi Luhur
15.50 – 16.10	Universitas Surabaya
16.10 – 16.30	Universitas Mercubuana
16.30 – 17.30	Poster Presentation/ Discussion with presenters (1); Denpasar Room, 3 rd floor

Session D 09.00 – 10.00	PKTS Grants Implementation Results Presentations (Parallel Session)
Session D1	Chair: Ied Veda Sitepu Tabanan Room, 4 th floor
09.00 – 09.20	Universitas Merdeka Malang
09.20 – 09.40	Universitas Muhammadiyah Ponorogo
09.40 – 10.00	Universitas Prof. DR. Hazairin, SH
Session D2	Chair: Ruddy JS Amlapura Room, 4 th floor
09.00 – 09.20	Universitas Nasional
09.20 – 09.40	Universitas Negeri Malang
09.40 – 10.00	Universitas Nusa Cendana
Session D3	Ahmad Syafiq Bangli Room, 4 th floor
09.00 – 09.20	Universitas Pakuan Bogor
09.20 – 09.40	Universitas Muhammadiyah Surakarta
09.40 – 10.00	Universitas Sari Mutiara Indonesia
10.00 – 10.20	Coffee and Tea Break
Session E 10.20 – 11.40	PKTS Grants Implementation Results Presentations (Parallel Session)
Session E1	Chair: Ied Veda Sitepu Tabanan Room, 4 th floor
10.20 – 10.40	Universitas Sebelas Maret
10.40 – 11.00	Universitas Sriwijaya
11.00 – 11.20	Universitas Gadjah Mada
11.20 – 11.40	Universitas Syiah Kuala
Session E2	Chair: Ruddy JS Amlapura Room, 4 th floor
10.20 – 10.40	Universitas Tanjungpura
10.40 – 11.00	Universitas Telkom Bandung
11.00 – 11.20	Institut Teknologi Nasional Malang
11.20 – 11.40	Politeknik Negeri Jakarta
Session E3	Ahmad Syafiq Bangli Room, 4 th floor
10.20 – 10.40	Sekolah Tinggi Teknik PLN
10.40 – 11.00	STKIP PGRI Sumatera Barat
11.00 – 11.20	Universitas Widyatama Bandung
11.20 – 11.40	Institute Teknologi 1 Nasional Bandung
11.40 – 12.00	Poster Presentation/ Discussion with presenters (2); Denpasar Room, 3rd floor
12.00 – 13.00	Lunch Break; Denpasar Room, 3rd floor
Session F 13.00 – 14.30	Tracer Study Implementation Results (Plenary) Chair: Ruddy JS Denpasar Room, 3rd floor
13.00 – 13.15	Stikes Muhammadiyah Palembang
13.15 – 13.30	Sekolah Tinggi Pariwisata Bandung
13.30 – 13.45	Fakultas Ilmu Sosial dan Ilmu Politik Universitas Indonesia
13.45 – 14.00	Akademi Kimia Analis Bogor
14.00 – 14.30	Discussion
Session G 14.30-17.00	INDOTRACE Special Meeting Denpasar Room, 3rd floor
14.30 – 15.30	Tracer Study UI 2010-2014 Ahmad Syafiq
15.30 – 16.15	UI-INDOTRACE Questionnaire Discussion Sandra Fikawati
16.15 – 17.00	Discussion
17.00-17.15	Closing Director of Career Development and Alumni Relations UI Denpasar Room, 3rd floor



COMPARISON OF MAIN RESULTS OF TRACER STUDY STATE POLYTECHNIC OF SRIWIJAYA 2012 AND 2014

Suparjo, RD. Kusumanto, Indri Ariyanti, Demby Pratama

Background

State Polytechnic of Sriwijaya did tracer study in year 2012 and 2014 using same procedures. Both of the project was done with the main aims in providing data for the study programs' accreditation process. Both of the project was done by a team consist of staff and lecturer from several units and all departments.

Methods

Lower response rate is always be a problem in HE tracer study and it also occurred in POLSRI Tracer Study. Because of those problems, POLSRI add new method in distribution questionnaire for the next Tracer Study. In TS 2012, we only use offline method in questionnaire distribution by visiting the alumni in workforce and by phone while in TS 2014 we also use mailing list, email, social media and information system website. We also contact the alumni association to contact alumni and get correct contact of the alumni. To know the effectiveness of the new method, POLSRI compare TS result between selected years. The comparison is only on selected variables especially on variables that needed for accreditation process. To analyze this data, quantitative descriptive method was used.

Results

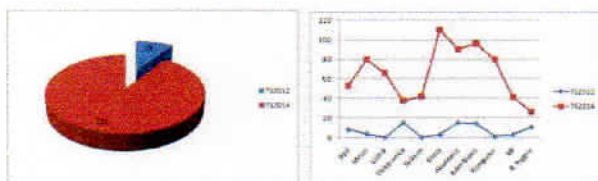


Figure 1 shows the number of respondent in TS 2014 increase approximately 10 times than in TS 2012. This is occurred in all of study program. In several study program: Chemical Engineering, Mechanical Engineering, Business Administration and Accounting the increasing is significant.

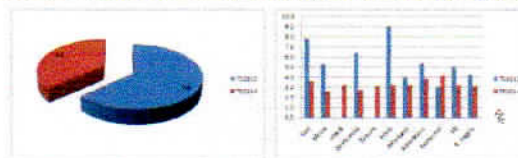


Figure 2 shows that the waiting period for alumni in job searching is decrease. In TS 2012, the average time of alumni get a job is in mean 5.6 months while in TS 2014 the average of alumni get a job is 3.2 months. The decreasing significant of waiting period is occurred on study programs Chemical Engineering, Civil Engineering and Electronics Engineering.

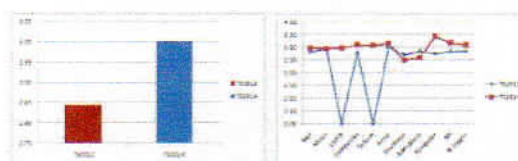


Figure 3 Shows the GPA average of respondent in TS 2014 (3.00) increase than in 2012 (2.84). From the next diagram, GPA Average in TS 2014 and TS 2012 is not too much difference.

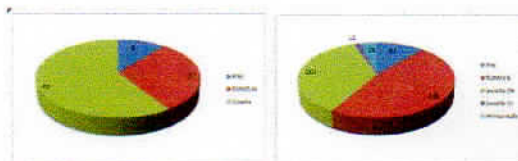


Figure 4 shows type of work the respondent in TS 2012 divide only in three category, namely Government Employee (PNS), State Owned Enterprises (BUMN/D) and Private Sector (Swasta) while in TS 2014, type of work the respondent divide in five category, namely Government Employee (PNS), State Owned Enterprises (BUMN/D), National Private Sector (Swasta (N)), International Private Sector (Swasta (I)) and Entrepreneur. From this figure, most of alumni work in Private Sector and State Owned Enterprises.

From those result, the new distribution method is effective and useful in increasing the number of respondent.

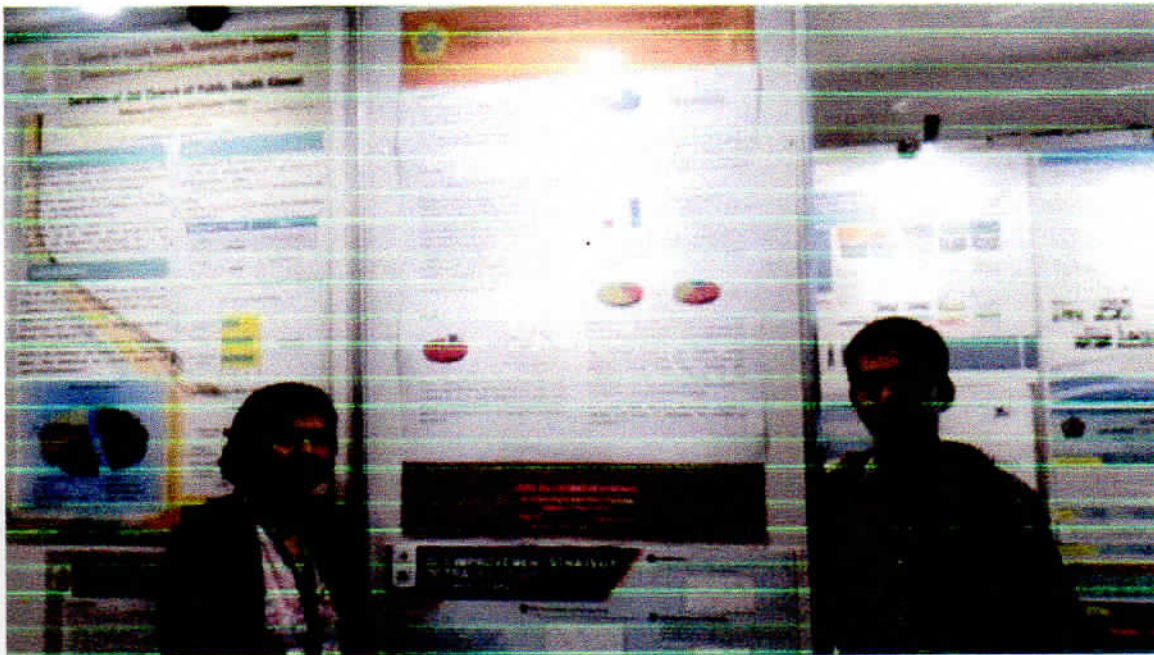
STATE POLYTECHNIC OF SRIWIJAYA

Jln. Sriwijaya Negara Bukit Besar Palembang

Sumatera Selatan 30139

Telp. 0711-353414 Email: info@polsri.ac.id

Website : <http://www.polsri.ac.id>



Poster Presentation Guidelines

Welcome to The International Conference on Experiences with Link and Match in Higher Education: Results of Tracer Studies Worldwide (EXLIMA) and INDOTRACE Workshop and Training on the 25-28th November, 2015 in Sanur Paradise Plaza Hotel – Denpasar/Bali (Indonesia)

Posters will be displayed throughout the duration of the conference and workshop starting on Wednesday, 25 November 2015. Poster session time slots are 30 minutes long on **Thursday, 26 November 2015 at 08.30-09.00 for EXLIMA as well as on Friday, 27 November 2015 at 16.30-17.30 and on Saturday, 28 November 2015 at 11.40-12.00 for INDOTRACE**. We ask all poster presenters to take note of this presentation time slots and please be present at your poster during the poster presentation time. If handouts are distributed, bring approximately 25 copies.

Please note:

- Poster sessions will take place in the foyer ballroom or lobby.
- A poster session is a graphic presentation of presenter's research. The presenter illustrates his or her findings by displaying graphs, photos, diagrams and **a small amount of text** on the poster boards. The presenter will then hold discussions with the registrants who are circulating among the poster boards. Many presenters find it is helpful to present a brief introduction and allow the remainder of the time for more in-depth discussions.
- Highlight the authors names and address information, in case the viewer is interested in contacting them for more information.
- No audiovisual equipment is permitted for poster presentations.

Poster Board Information

- The author should prepare all materials in advance.
- The poster board size is confined to a 100 cm x 90 cm space mounted on stands.
- Presenters are responsible for providing their own pins for mounting their posters on the display boards.
- All posters could be prepared to display on registration time Wednesday, 25 November 2015 (Exlima) or Friday, 27 November 2015 (Indotrace). The organization committee will assist the presenter to put the poster in the partition.
- Presenters may leave their poster on display throughout the duration of the event (Exlima and Indotrace).
- After 28 November 2015 at 18.00 display materials not removed following the conclusion of the workshop will be discarded.

Poster should include:

- Title of the presentation and the list of authors. Letters in the title should be at least 55 point font and list of authors 36 point font
- Bring all illustrations needed -- figures, tables, color photographs, charts. It may be helpful to consult an artist about the display.
- The material should be well labeled and legible from a distance of 2 m.
- Lettering should be bold. If you will be posting typed material, use a large font size (24 to 28 point font) on white, pale yellow or cream-colored non-glossy paper.
- Use 1-inch margins. Use upper and lowercase letters. Simple serif fonts such as "Times New Roman" are easier to read than sans (without) serif fonts such as "Geneva."
- In the event that you are unable to attend and participate, please contact the scientific committee as soon as possible (tracerstudy.conference2@gmail.com).

Organizing Committee

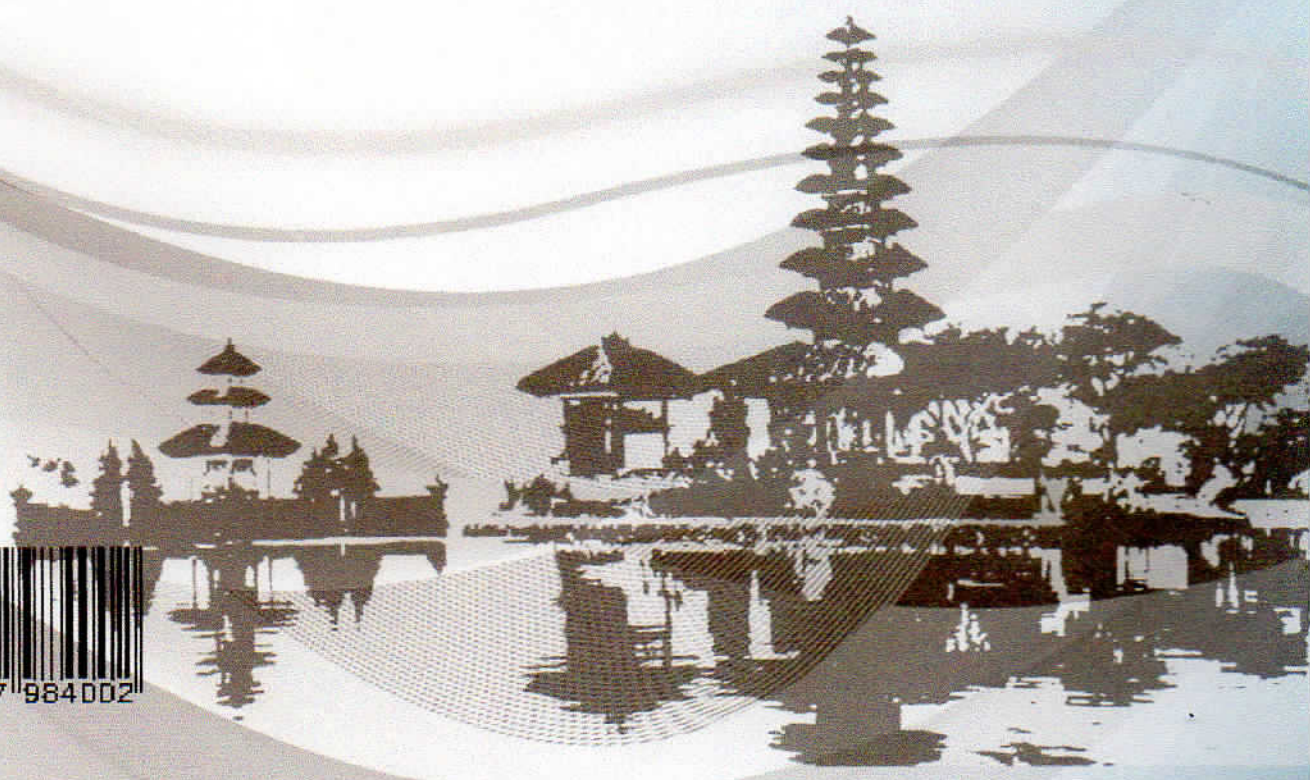


Supporting Organization



Sponsor





9 772527 984002