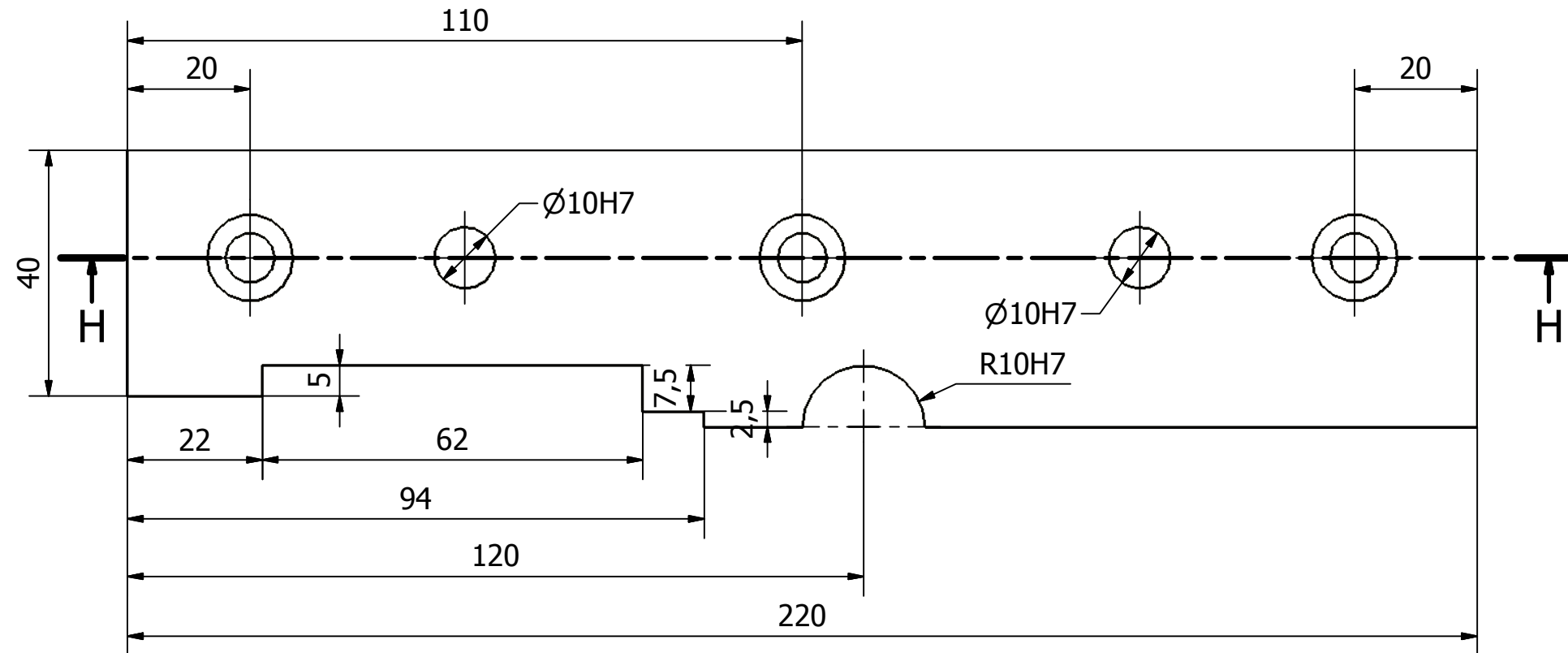
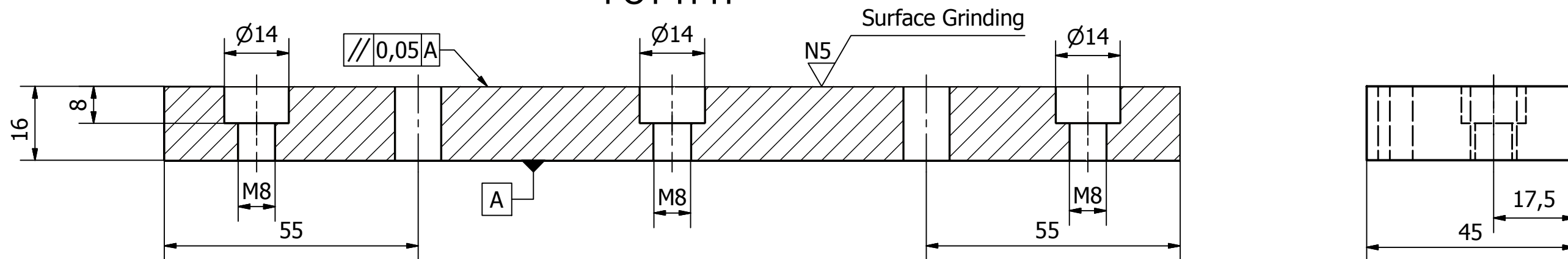


No.14 Tol ±0.01 N7 Milling



POT H-H



| | | | | | |
|---|------------------------------|----------------------------|-----------------------|-------------------------|-------------------------------|
| I | Sub Dies Kiri | 14 | ST42 | 230 x 50 x 20 | Dibuat |
| Jumlah Quantity | Nama Bagian Part Name | No. Bagian Part No. | Bahan Material | Ukuran Dimension | Keterangan explanation |
| I | II | III | Perubahan: | | |
| PROGRESSIVE TOOL | | | | Skala Scale | Digambar Drawn |
| | | | | 1 : 1 | Diperiksa Checked |
|  Politeknik Negeri Sriwijaya Jalan Sriwijaya Negara Bukit Besar Palembang 30139 Telp: +620711353414 web: http://www.polsri.ac.id E-mail: info@polsri.ac.id | | | | DRA TA 07/2016 MA | |