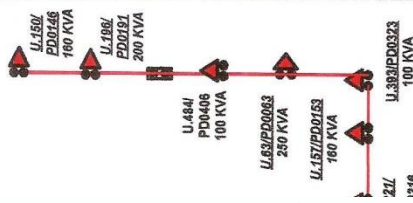
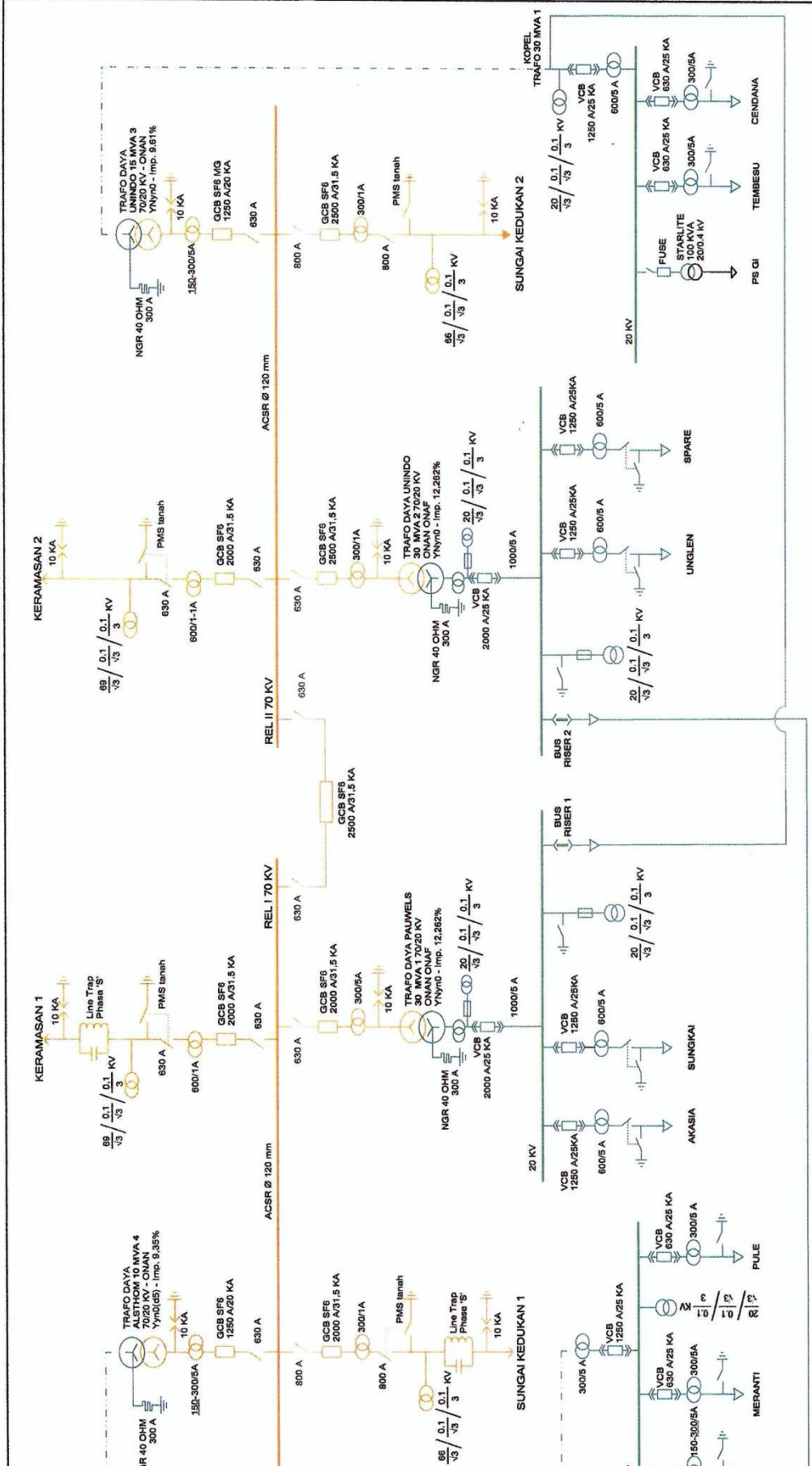


LAMPIRAN





PT. PLN (Persero) Wili.S2JB
 AREA PENGATUR DISTRIBUSI S2JB
 Jl. Gub. H.A. Bastari Jakabaring Palembang

LAPORAN REKAP BEBAN PUNCAK AREA PALEMBANG BULAN FEBRUARI 2017

NO	GARDU INDUK / PENYULANG	KAP	SETTING RELE	BEBAN PUNCAK AREA PALEMBANG FEB 2017									
				Siang			Malam						
				Amp	Teg	MW	%	Amp	Teg	MW	%		
9	GI Bungaran												
1	Trafo 1 - 30 MVA/70-20 KV	30	840	498	20.0	15.51	57.44%	566	20.0	17.63	65.28%		
1	Akasia		300	241		7.50		275		8.56			
2	Sungkai		225	84		2.62		104		3.24			
3	Tembesu		300	41		1.28		49		1.53			
4	Cendana		300	197		6.13		238		7.41			
2	Trafo 2 - 30 MVA/70-20 KV	30	540	143	20.0	4.45	16.49%	117	20.2	3.64	13.49%		
1	Unglen		300	113		3.52		41		1.28			
2	Meranti		225	116		3.61		98		3.05			
3	Pule		225	0		0.00		0		0.00			



Keterangan :
 Beban Trafo > 85%
 Beban Trafo 70 - 84,99%
 Beban Trafo 0 - 69,99%





PAWEL TRAGO

POWER TRANSFORMER

SERIAL NUMBER: 301120024
 YEAR OF MANUFACTURE: 2013
 STANDARD: IEC 20076
 RATED POWER: 30/30 MVA
 COOLING: ONAN/ONAF 20/100%
 FREQUENCY: 50 HZ
 PHASES: 3
 TEMP. RISE: 10P OIL
 BELOW 1000m ALTITUDE
 AVERAGE WIND: 55 K
 TANK: VACUUM
 CONSERVATOR: 100%
 RADIATOR: 100%
 TYPE OF OIL: MINAS LIBRA

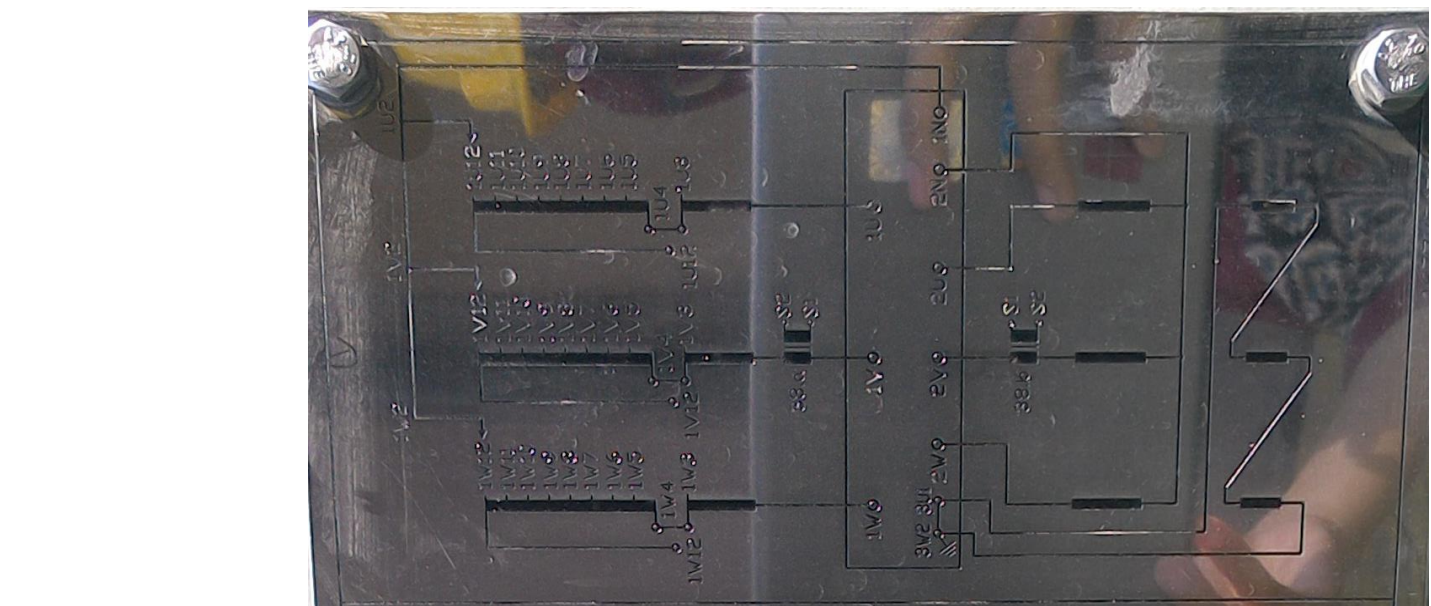
LI 625 AC 140-
 LI 125 AC 50-
 LI - AC 22/
 CONNECTION: YNyn0(d)
 MVA: 30/30
 CAP. CHANGER: NR - VA 10 400 - 7.6 - 200VA + 0P.88
 TOTAL OIL: 55100 kg
 UNITS AND PARTS: 30x100 kg

TAP	VOLT	MVA	SHORT CIRCUIT IMPEDANCE %Z
1	72000	30	12.930
5	20000	30	12.262
9	63000	30	11.873

HIGH VOLTAGE TERMINALS: 1N-1U-1V-1W			
TAP	VOLT	AMPERE	MVA
1	72000	224.8	30
2	76125	227.9	30
3	79250	230.2	30
4	74875	228.9	30
5	73500	235.7	30
6	72625	238.5	30
7	71750	241.4	30
8	70875	244.4	30
9	70000	247.4	30
10	70000	247.4	30
11	69125	250.6	30
12	68250	253.8	30
13	67375	257.1	30
14	66500	260.9	30
15	65625	263.9	30
16	64750	267.5	30
17	63875	271.2	30
18	63000	274.8	30

LOW VOLTAGE TERMINALS: 2N-2U-2V-2W			
VOLT	AMPERE	MVA	CONNECTION TAP CHANGER
20000	866	30	30
63000	866	30	30

ASBEST TRANSFORMER			
VOLT	AMPERE	MVA	CONNECTION TAP CHANGER
386	500/2A	20VA	0/3
386	1000/2A	20VA	0/3



Manufactured by PT CG Power Systems Indonesia

1677/0729/A

UNINDO

THREE PHASE TRANSFORMER N° P030HE759-02

YEAR OF MANUFACTURE 2013

WITH 17 POSITIONS ON LOAD TAP CHANGER
 RATED POWER 18 / 30 MVA - FREQUENCY 50 HZ
 OUTDOOR TYPE - CONTINUOUS SERVICE
 TEMPERATURE RISE : OIL 50 °K - WINDINGS 55 °K
 COOLING ONAN / ONAF

RATED POWER IN MVA	(ONAN/ONAF)	HIGH VOLTAGE	LOW VOLTAGE
RATED VOLTAGE IN KV	69	18 / 30	18 / 30
RATED CURRENT IN A	(ONAN/ONAF)	519.6 / 868.0	20
CONNECTION	STAR	STAR	STAR
LINE IN	1U, 1V, 1W	2U, 2V, 2W	2U, 2V, 2W
NEUTRAL IN	1N	2N	2N

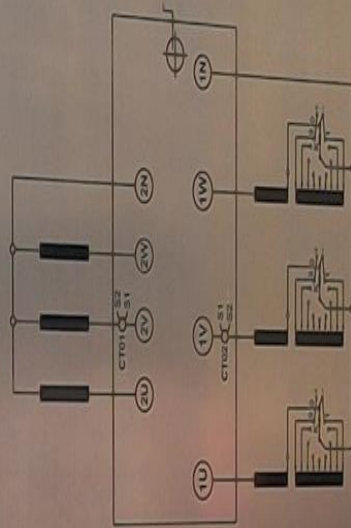
RATED WINDINGS WINDINGS WITHSTAND VOLTAGE 1.2/50 (KV)		RATED POWER FREQUENCY WITHSTAND VOLTAGE (KV)	
LINE SIDE (KV)	NEUTRAL SIDE (KV)	LINE SIDE (KV)	NEUTRAL SIDE (KV)
325	325	140	140
125	125	50	50

POSITION ONTC	HIGH VOLTAGE		LOW VOLTAGE		RATED CURRENT (A)	RATED VOLTAGE (KV)	RATED POWER (MVA)
	TAPPING CURRENT (A)	ONAN	ONAF	ONAF			
1	11.775	124.3	124.3	124.3	519.6	18	18 / 30
2	11.775	124.3	124.3	124.3	519.6	18	18 / 30
3	11.775	124.3	124.3	124.3	519.6	18	18 / 30
4	11.775	124.3	124.3	124.3	519.6	18	18 / 30
5	11.775	124.3	124.3	124.3	519.6	18	18 / 30
6	11.775	124.3	124.3	124.3	519.6	18	18 / 30
7	11.775	124.3	124.3	124.3	519.6	18	18 / 30
8	11.775	124.3	124.3	124.3	519.6	18	18 / 30
9	11.775	124.3	124.3	124.3	519.6	18	18 / 30
10	11.775	124.3	124.3	124.3	519.6	18	18 / 30
11	11.775	124.3	124.3	124.3	519.6	18	18 / 30
12	11.775	124.3	124.3	124.3	519.6	18	18 / 30
13	11.775	124.3	124.3	124.3	519.6	18	18 / 30
14	11.775	124.3	124.3	124.3	519.6	18	18 / 30
15	11.775	124.3	124.3	124.3	519.6	18	18 / 30
16	11.775	124.3	124.3	124.3	519.6	18	18 / 30
17	11.775	124.3	124.3	124.3	519.6	18	18 / 30

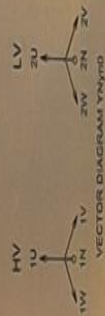
DESIGNATION	RATED POWER VA	CLASS	GROUP	MEASUREMENT
CT01	18	3	10000VA	MEASUREMENT
CT02	18	3	10000VA	MEASUREMENT

APPLY SHORT CIRCUIT IMPEDANCE POSITION 9 BASE ON 30 MVA
 TYPE OF OIL MINERAL OIL
 TRANSFORMER COMPLIANT WITH STANDARD IEC 60076
 FACTORY TESTS PERFORMED WITH STANDARD TESTS
 FACTORY ENERGY TAP AND DELIVERABLE FOR USA CHECKING AND SELECTIVE TESTS
 THIS TRANSFORMER CONTAINED NO DETECTABLE LEVELS OF PCB AT THE TIME OF MANUFACTURE

QUANTITIES	%	MEASURED
12.3	100	100
UNDETERMINED		



CONNECTION DIAGRAM

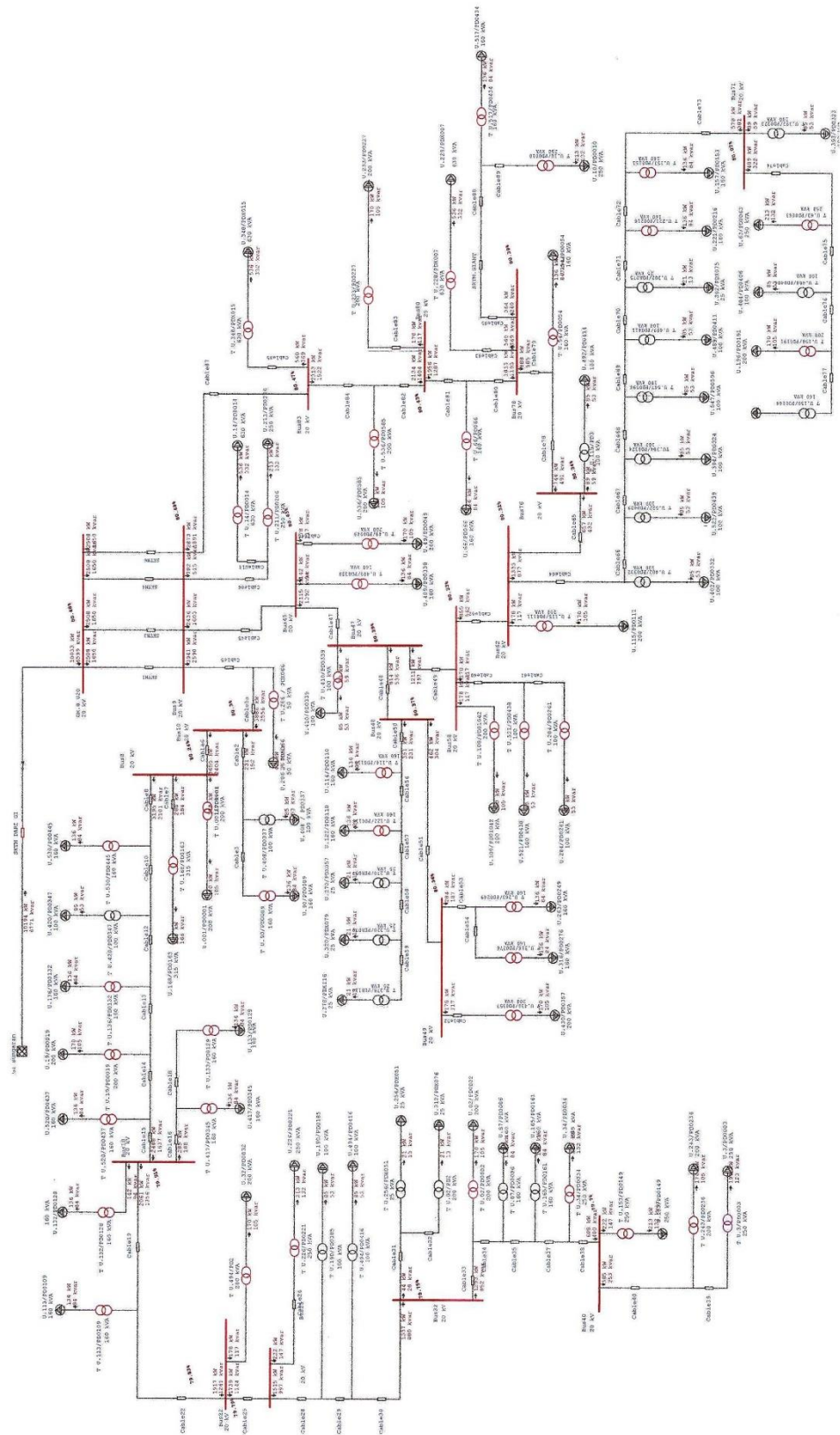


APPROXIMATE WEIGHTS
 - UNTANKING 39000 kg
 - CORE AND COILS 37000 kg
 - TANK 12700 kg
 - OIL 10000 kg
 - TOTAL 99000 kg

ALSTOM GRID - JAKARTA - INDONESIA



One-Line Diagram - OLV1 (Load Flow Analysis)



One-Line Diagram - OLV1 (Load Flow Analysis)

