

The image shows a person interacting with a SIMATIC WinCC system. A large monitor in the background displays a 'PLANT OVERVIEW' dashboard with various widgets for 'PLANT 14', 'STATION 05', 'STATION 07', 'STATION 12', 'STATION 09', and 'STATION 13'. It includes data like 'CURRENTLY 15:00' and 'AT THE LIMIT 4321276'. A person's hand is pointing at a tablet in the foreground, which shows a detailed view of 'PLANT 14' with a 'REACTOR' section, a 'TRIP' graph, and a '500' value. The person is wearing a blue shirt. The background is a clean, white desk with a keyboard and mouse.

SIEMENS

siemens.com/wincc

SIMATIC WinCC

The scalable and open SCADA system
for maximum plant transparency and productivity

Answers for industry.

SIMATIC SCADA systems

The suitable SCADA system for every application

The course for tomorrow's industrial world is already set today. With SIMATIC WinCC, you can rely on a future-proof system. Find out how SIMATIC WinCC optimally prepares you for the requirements of tomorrow already today.

Efficiency

- Reduced time-to-market
- Minimized downtimes
- Reliable decision basis for increased productivity

Scalability

- Support of the existing plant's expansion at anytime
- Solutions for all sectors
- Investment protection



Innovation

- Rapid access to plant data – 24/7
- Flexible availability of plant data
- Intuitive and safe operation

Partners and support

- Global support according to highest quality standards

Openness

- Easy integration in the IT world
- Fast integration of existing hardware

Requirements of the future

The data volume of modern industrial plants is continuously growing, entailing increasing requirements placed upon the employed SCADA solutions: Vast data volumes have to be managed and archived in the long term. At the same time, requirements in terms of performance are on the increase. Technologies, also from the consumer environment, are finding their way into industrial applications. Globalization calls for superior SCADA systems which are used worldwide. In addition, there is an increasing request for mobile access to plant information. Against the background of constantly increasing (energy) costs, all these requirements are topped off by the necessity for improved energy efficiency and productivity.

Fit for tomorrow, today

With SIMATIC WinCC V7, the scalable and open SCADA system by Siemens, you opt for the right choice throughout your plant's entire lifecycle.

Increase your productivity with SIMATIC WinCC

Efficiency in terms of engineering and operations control

Efficient engineering, integrated diagnostics functions and flexible production analysis ensure reduced time-to-market as well as minimized plant downtimes.

SIMATIC WinCC offers a reliable decision basis for optimizations and thus supports increased productivity coupled with reduced costs.

Innovative solutions

Thanks to innovative technology, all important information is consistently available – rapidly, flexibly and safely. SIMATIC WinCC thus eases your production's intuitive operation and monitoring – also remotely.

Easy scalability

SIMATIC WinCC facilitates your plant's easy functional or sector-specific expansion or modernization. Benefit from redundancy concepts for increased availability or opt for central plant information archiving and analysis.

Openness

We rely on manufacturer-independent communication for the integration of existing hardware as well as for easy integration in the IT world. A further advantage: Specific expansions for individual solutions according to your requirements.

Solution Partners & support

WinCC Specialists are at your service as qualified solution providers worldwide. These certified and centrally audited partners realize your individual SCADA project, also with distributed client-server architectures involving redundancy or with applications involving energy data management systems.

Moreover, Siemens offers global support according to highest quality standards.

In addition to the 24/7 hotline, you can for example also consult experts in forums and access freely available demo projects.



Easy scalability and efficient production analysis

Many user groups – with benefits for all

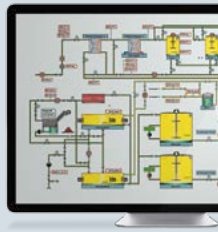
Web-based reports



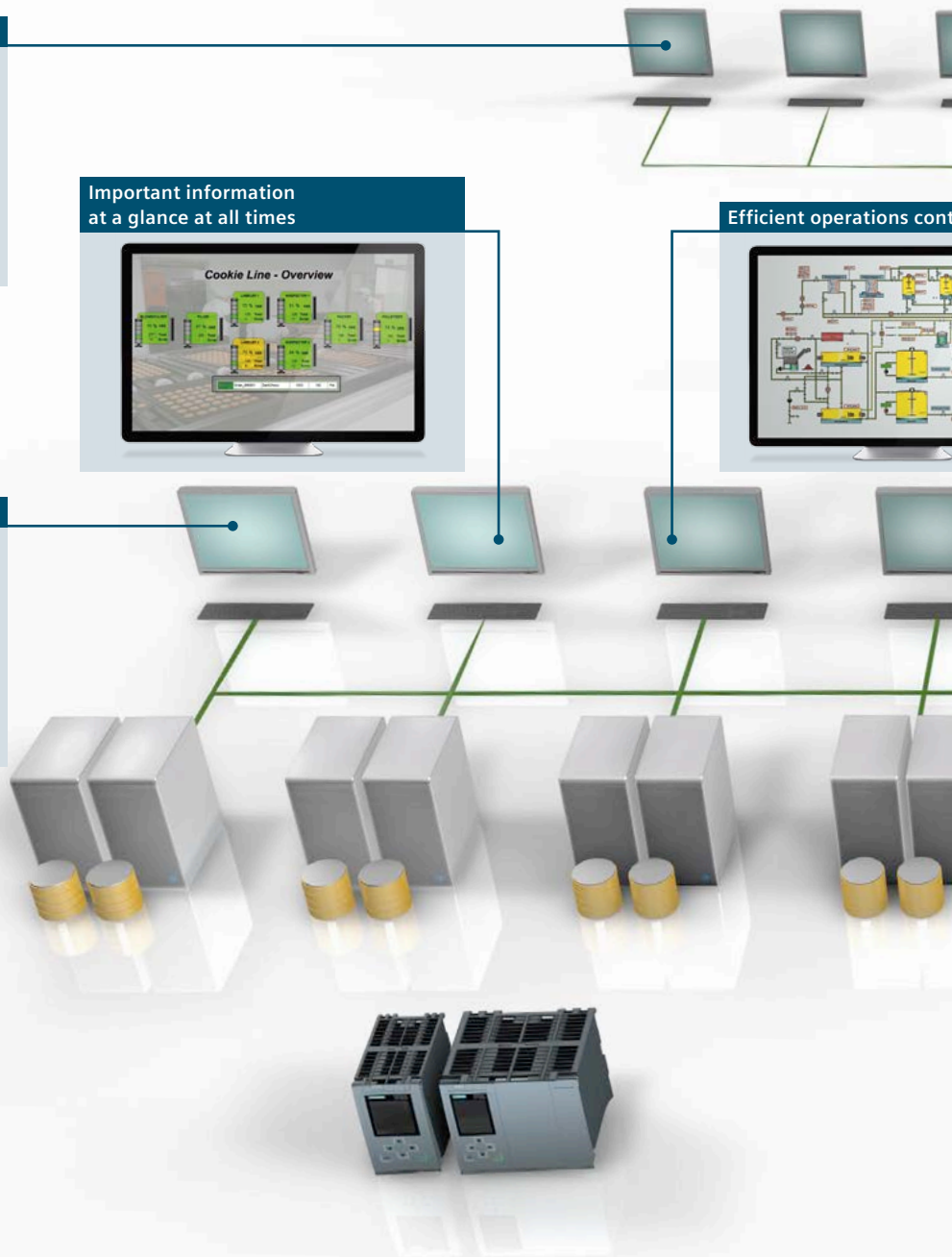
Important information at a glance at all times



Efficient operations control



Reduced energy costs



Automation and IT solutions are generally subject to permanent changes. Amongst others, this comprises modernizations of individual plant areas, subsequent plant expansions, implementation of central site-spanning monitoring solutions and optimization of site- or company-specific process workflows.

In order to meet such increasing requirements, the visualization solution has to be expandable as required without the risk of technology gaps or the need for complete new configurations.

Remote operation and monitoring



Mobile access to important key performance indicators



Rapid identification of weak spots



Efficient engineering



Powerful long-time archive

Investment protection is paramount. SIMATIC WinCC offers the requested integrated scalability from the single-user system down to the distributed client-server solution with central long-time archive server and web-based solutions.

SIMATIC WinCC options

Software expansions for individual requirements

Individual functional or sector-specific software expansions are available in the form of WinCC options* as well as WinCC add-ons.

WinCC V7 options

Easy scalability

- **WinCC/Server** – for distributed client-server systems
- **WinCC/Redundancy** – for increased availability
- **SIMATIC Process Historian** – powerful, plant-wide long-time archive
- **WinCC/WebNavigator** – plant operation and monitoring via the Internet/Intranet
- **WinCC/WebUX** – mobile access to important plant information
- **WinCC/Telecontrol** – integration of distributed remote stations in the telecontrol system

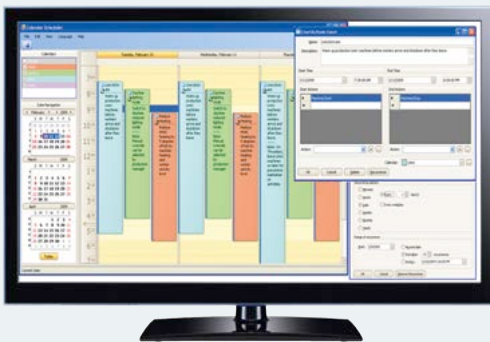
Efficiency in terms of operations control

- **WinCC/UserArchive** – management of user data records
- **WinCC/Audit and WinCC/ChangeControl** – tracking of operator actions
- **SIMATIC Information Server** – web-based reports of historical plant data on basis of Microsoft Reporting Services or with Microsoft Excel
- **WinCC/PerformanceMonitor** – production analysis on the basis of individual key performance indicators
- **Web-based performance reports** in combination with the SIMATIC Information Server
- **SIMATIC B.Data** – optimized energy operations control
- **WinCC/CalendarScheduler** – planning of events as calendar function
- **WinCC/EventNotifier** – forwarding of information as e-mail or SMS

Openness for special requests

- **WinCC/IndustrialDataBridge** – bidirectional data exchange via standard interfaces – without programming
- **WinCC/ODK, WinCC/ConnectivityPack and WinCC/ConnectivityStation** – open interfaces for user-specific expansions

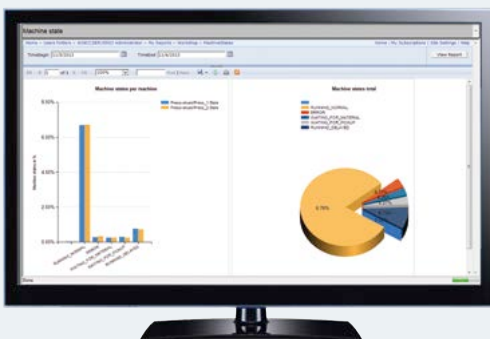
* Please observe the individual options' release



WinCC/CalendarScheduler:
Planning of calendar-based events



SIMATIC B.Data:
Increased production transparency



SIMATIC Information Server:
Comfortable analysis and report generation

Efficiency

As key to increased productivity, SIMATIC WinCC combines efficient engineering with powerful archiving and maximum data security. It serves as the basis for efficient operations control and intelligent production analysis.

Scalability

We offer stationary or mobile solutions for increasing requirements – with guaranteed safety. For this purpose, we use our SCADA know-how of more than 15 years across all sectors. No matter how moderate or expansive your requests – we provide the suitable solution.

Innovation

Benefit from information provision anytime and anywhere with mobile SCADA solutions – also with available tablet or smartphone hardware. The application of multitouch gestures in industrial environments opens the door to modern operating concepts.

Openness

Thanks to the support of international standards as well as native script and programming interfaces, also special requests can be easily realized.



Universal applicability – solutions for all sectors and technologies

SIMATIC WinCC is technology- and sector-neutral and features a modular and easily expandable design. It is employed worldwide, both in single-user applications in the field of mechanical engineering as well as in complex multi-user solutions with redundant servers or web-based client access. References from numerous sectors prove the solution's versatility and high performance:

- Automotive production and suppliers
- Chemical and pharmaceutical industry
- Food, beverages and tobacco industry
- Machine and plant engineering
- Energy supply and distribution
- Trade and service sector
- Plastic and rubber industry
- Metal processing and steel industry
- Paper production and processing
- Printing industry, transport, traffic and logistics
- Water treatment and wastewater purification
- Building services management and management of properties

Further information is available in the Reference Center:

www.siemens.com/automation/references

Find out more:

www.siemens.com/wincc

Learn everything
about SIMATIC WinCC

SIMATIC
WinCC –
take a look!



Subject to change without prior notice
Article No.: E20001-A820-P810-X-7600
Dispo 06333
WÜ/52888 1102093561 WS 07141.
Printed in Germany
© Siemens AG 2014

The information provided in this brochure contains merely general descriptions or characteristics of performance which in case of actual use do not always apply as described or which may change as a result of further development of the products. An obligation to provide the respective characteristics shall only exist if expressly agreed in the terms of contract.

All product designations may be trademarks or product names of Siemens AG or supplier companies whose use by third parties for their own purposes could violate the rights of the owners.

Siemens offers automation and drive products with industrial security functions which support safe plant or machine operation. They essentially contribute to the realization of a holistic industrial security concept.

Our products are continuously advanced under this aspect. We therefore recommend you to regularly inform yourself on updates of our products and to only use the respectively current versions. Relevant information is available at:
<http://support.automation.siemens.com>.
You can also subscribe to a product-specific newsletter via this link.

Moreover, safe system or machine operation necessitates the implementation of suitable protective measures (e.g. cell protection concept) and the integration of all automation and drive components in a holistic state-of-the-art industrial security concept for the entire system or machine. Also third-party products have to be taken into account in this context. Further information is available at:
www.siemens.com/industrialsecurity

Follow us on:
twitter.com/siemensindustry
youtube.com/siemens

Siemens AG
Industry Sector
Industry Automation
P.O. Box 48 48
90026 NUREMBERG
GERMANY